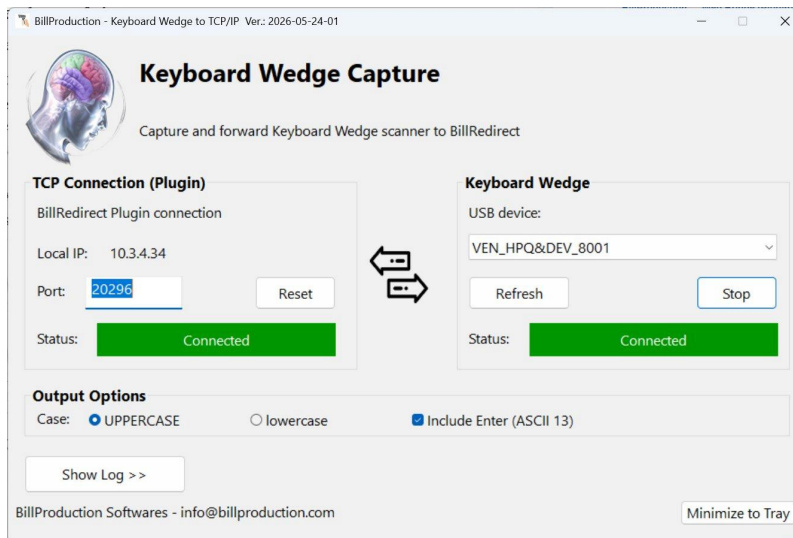




# Keyboard Wedge Capture

BillProduction Plugin  
*Keyboard wedge device capture to TCP/IP*

## User Manual



### BillProduction Softwares

<https://www.billproduction.com> | [info@billproduction.com](mailto:info@billproduction.com)

## 1. Introduction

Keyboard Wedge Capture is a professional Windows software that intercepts data entered by a USB keyboard-emulation device and forwards it via TCP/IP to the BillRedirect software.

Unlike traditional USB devices that inject keystrokes into the active Windows window, this software captures data at the kernel driver level, ensuring it never appears in Notepad, Excel, or any other application — it is sent only to BillRedirect.

### Compatible devices

The software works with ALL USB keyboard-emulation devices (Keyboard Wedge devices), including:

- Barcode scanners (1D and 2D)
- RFID readers
- Proximity card readers
- Electronic scales
- Gauges and measurement instruments
- Any other HID device that behaves like a keyboard

### Benefits

- No data leakage into the active application
- Precise device selection (you can have multiple keyboards connected)
- Reliable TCP/IP communication with BillRedirect
- Runs silently in the Windows system tray
- Auto-starts with Windows
- Restores its state after a reboot

### Requirements

Item	Requirement
Operating system	Windows 7 SP1, 8, 10 or 11 (32 or 64-bit)
Administrator rights	Required for installation
Device	Any USB keyboard-emulation device (HID)
Partner software	BillRedirect (sold separately)
Reboot	Required after driver installation

## 2. Installation

### Step 1: Download

Download KeyboardWedgeCapture.zip from <https://www.billproduction.com> and extract it. You will get:

- Install\_Keyboard\_Wedge\_Capture.exe — the installer
- README.txt — quick instructions

### Step 2: Run the installer

1. Double-click Install\_Keyboard\_Wedge\_Capture.exe
2. Accept the UAC (User Account Control) prompt — administrator rights are required
3. Follow the installation wizard
4. At the end of the installation, Windows will REBOOT automatically

**IMPORTANT:** The reboot is required because the software installs a kernel driver that can only be loaded at Windows startup. Save your work before running the installer.

### Step 3: After the reboot

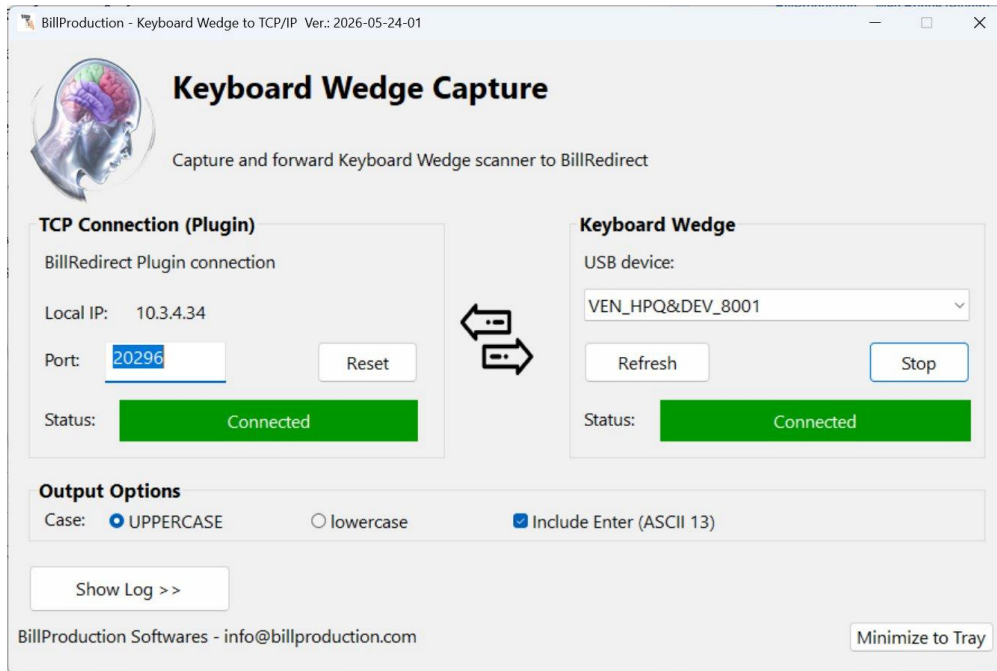
After the reboot, you will notice:

- A shortcut on the Desktop: Keyboard Wedge Capture
- An icon in the Windows system tray (bottom-right corner)
- A notification at first launch indicating that the software is running

The software is now ready to be configured.

### 3. Interface overview

Click once on the Keyboard Wedge Capture icon in the Windows system tray to open the main interface:



The interface consists of several sections that we will detail one by one in the next part.

## 4. Configuration

### 4.1 TCP Connection (Plugin)

**TCP Connection (Plugin)**

BillRedirect Plugin connection

Local IP: 10.3.4.34

Port:

Status: Connected

This section manages the network communication with BillRedirect:

- BillRedirect Plugin connection: indicates this is the connection to the BillRedirect software
- Local IP: the IP address of this computer (used in BillRedirect to connect to it)
- Port: the TCP listening port (20296 by default, can be changed if needed)
- Reset: resets the TCP connection if there is a problem
- Status: green "Connected" when BillRedirect is connected, red otherwise

### 4.2 Keyboard Wedge (USB device)

**Keyboard Wedge**

USB device:

Status: Connected

This section lets you select and activate device capture (barcode scanner, RFID reader, scale, gauge, etc.):

1. Click the USB device: dropdown
2. Select your device from the list (identified by its VID/PID, e.g. VEN\_HPQ&DEV\_8001)
3. If your device is not listed, click Refresh
4. Click Start to activate capture (the button becomes Stop)

The status turns green "Connected" — your device is now intercepted.

### 4.3 Output options

**Output Options**

Case:  UPPERCASE  lowercase  Include Enter (ASCII 13)

Customize the format of data sent:

Option	Description
UPPERCASE	Converts all characters to uppercase
lowercase	Converts all characters to lowercase
Include Enter (ASCII 13)	Adds a carriage return at the end of each scan

These options can be changed at any time, even while capture is active.

#### 4.4 BillRedirect configuration

For Keyboard Wedge Capture to communicate with BillRedirect, the Plugin section must be ENABLED in the BillRedirect main interface.

Here is the main interface of BillRedirect:



**REQUIRED:** The Plugin checkbox (top center of the BillRedirect interface) must be CHECKED. Without this, Keyboard Wedge Capture cannot send data to BillRedirect.

Zoom on the Plugin section to check:

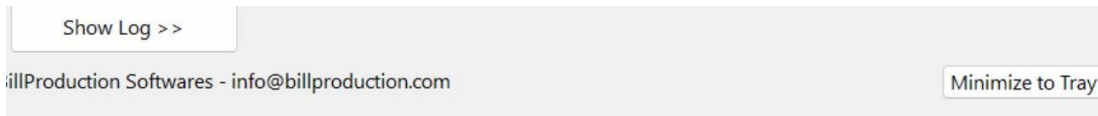


Steps in BillRedirect:

1. Check the Plugin checkbox (top center)
2. Click the Configuration button below Plugin
3. Configure the incoming TCP port to 20296 (the same value as in Keyboard Wedge Capture)
4. Make sure the On/Off switch is set to On (green)
5. Click Save Configuration at the bottom of the screen

Once done, the TCP status in Keyboard Wedge Capture turns green "Connected".

## 5. Control buttons



At the bottom of the main window, you will find:

- Show Log >>: displays or hides the activity log area
- Minimize to Tray: minimizes the window to the Windows system tray

## 6. Daily use

### Auto-start

The software auto-starts with Windows and stays in the system tray. You normally don't need to do anything on a daily basis.

### Reading data

When BillRedirect is open and capture is active, use your device (scan a barcode, read an RFID card, take a scale measurement, etc.). The data appears in BillRedirect, but not in any other Windows application.

### Hide / Show the window

- To hide: click the Minimize to Tray button or close the window
- To show: click the icon in the system tray
- Right-click on the icon: menu with Show window / Hide window / Quit

### View activity log

Click the Show Log >> button to display the log area. You will see all received data with timestamps.

### Anti-piracy protection

This software only sends data via TCP if BillRedirect is running on the same PC. If BillRedirect is not running, you will see the message "SCAN NBP:" in the log instead of a normal send.

## 7. Troubleshooting

### The software doesn't capture my device

- Check that you clicked Start after selecting the device
- The Keyboard Wedge status should be green with "Connected"
- Click Refresh to update the device list
- Check that the device is properly connected and recognized by Windows

### BillRedirect doesn't receive anything

- Check that BillRedirect is running
- Check that the TCP status is green "Connected"
- Check that the port (20296 by default) matches in both software
- Check the IP address shown in Local IP
- Click Reset to reset the TCP connection

### The device still injects characters into Notepad

- Capture is not active — click Start
- Or the wrong device is selected in the list
- Check that Windows was properly rebooted after installation

### The software doesn't auto-start with Windows

- Check in Task Manager, Startup tab, that Keyboard Wedge Capture is enabled
- Reinstall the software if necessary

## 8. Uninstallation

To uninstall the software:

1. Close the software (right-click on the tray icon → Quit)
2. Go to Windows Settings → Apps → Installed apps
3. Find Keyboard Wedge Capture and click Uninstall
4. Follow the instructions
5. A reboot is recommended to unload the kernel driver

## 9. Technical support

For any question or issue:

- Website: <https://www.billproduction.com>
- Email: [info@billproduction.com](mailto:info@billproduction.com)