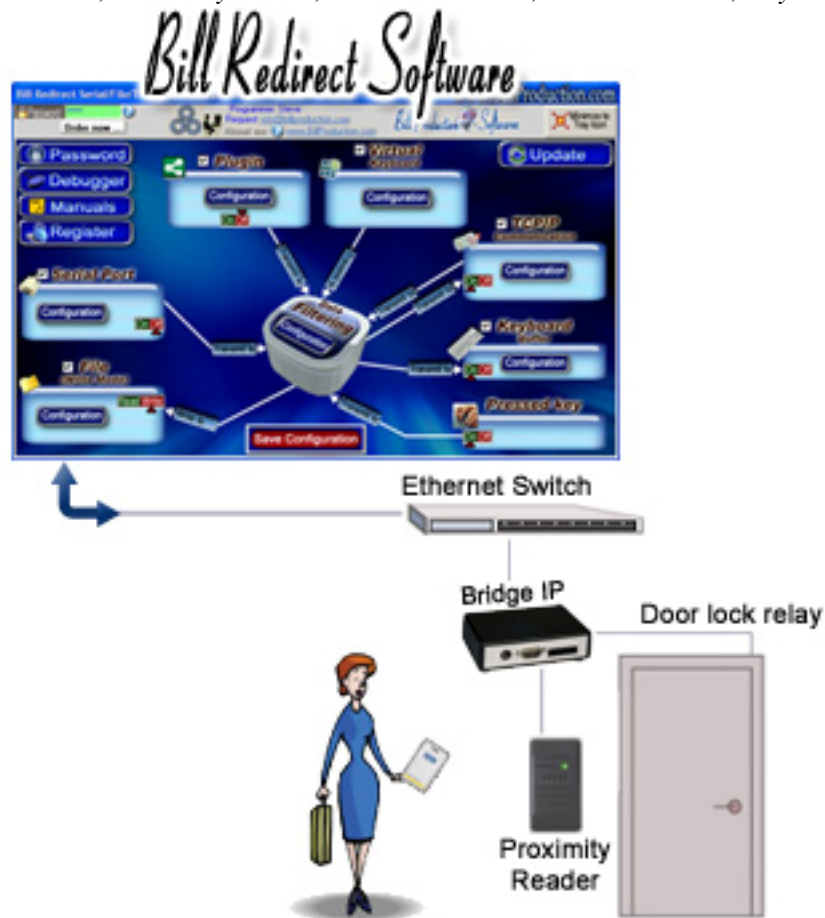




## Bill Redirect Software

Door Locks access control with Symcod products Bridge IP

(Support: RFID reader, Proximity reader, Biometric reader, Barcode reader, KeyPad ... )



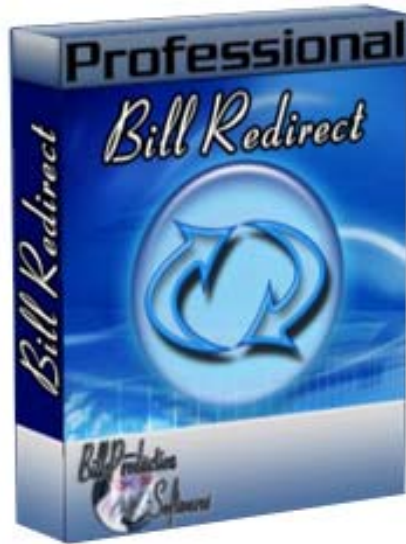
Use this documentation with the product : Bill Redirect Version 6.0B or more.

(Rev.: 12/04/2009)

Our Internet site: <http://www.billproduction.com/>

Email: [info@BillProduction.com](mailto:info@BillProduction.com)

SOFTWARE DESCRIPTION



**BillRedirect software works with all Symcod products !  
This professional multi TCP port software enables  
Symcod Product Bridge IP to control Door Locks Access.**



**Symcod Bridge IP**

**No programming or additional hardware required !**

**Supported Operating Systems:** Windows 98, Me, 2000, 3000, XP, NT4, Vista.

 GENERAL INFORMATION

To configure this software you have to enter in the field password [www.billproduction.com](http://www.billproduction.com), In the configuration options you have the possibility to change this password for what you want. To close this software, type END in the password field.

**Software configuration and integration service**

**It's free, fast (*usually the same day*), and efficient !**

**Submit your case to [info@billproduction.com](mailto:info@billproduction.com)  
and receive a customized answer !**



**Custom Software Development**

With over 15 years of experience in successfully providing Custom Software Development solutions for over 300 customers, we have honed our processes and skills to cater to your specific business needs.

To request a feature, a Customize option or any kind of Software:

Contact by email: [info@billproduction.com](mailto:info@billproduction.com)

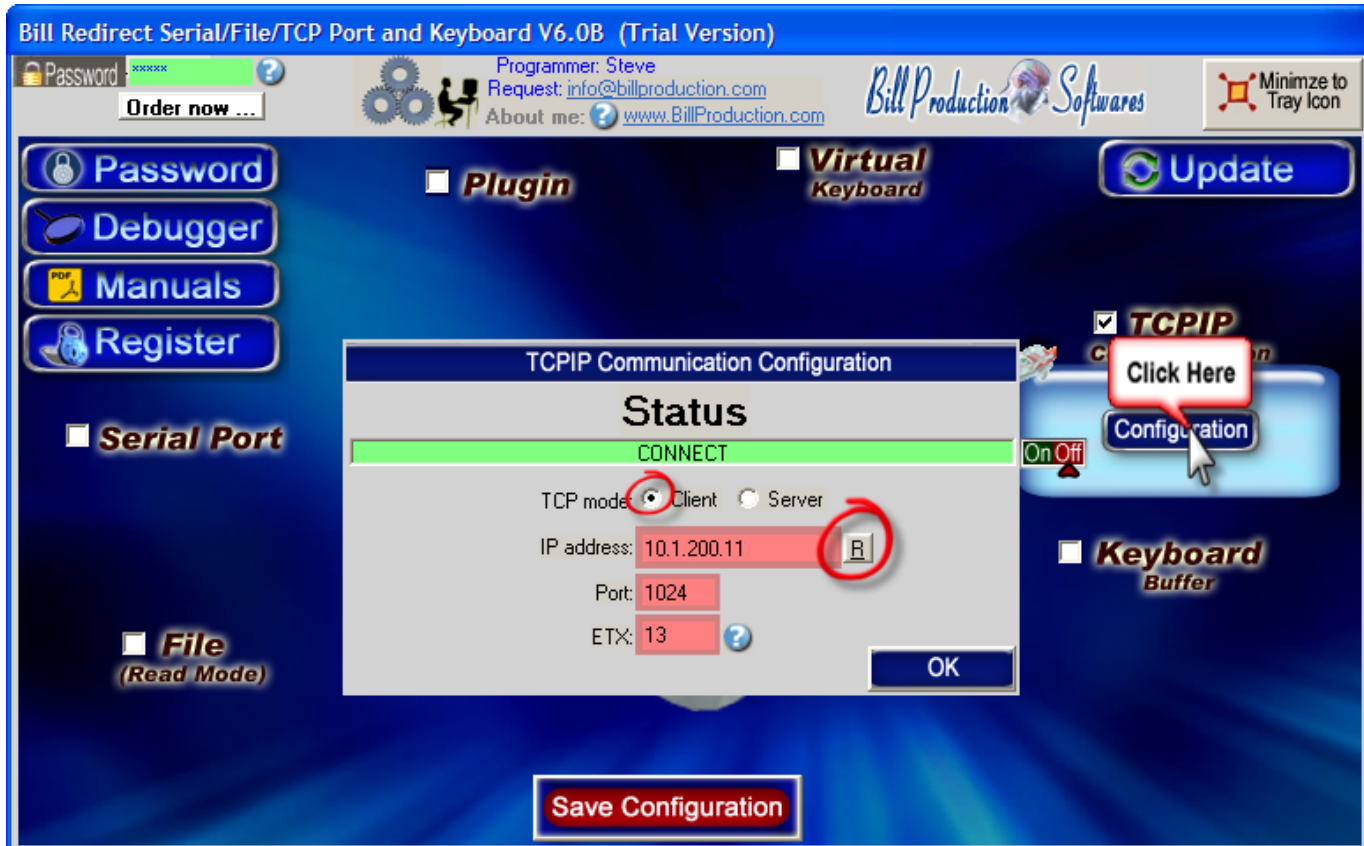
**This example shows how you can control door lock access via the product Bridge IP (Symcod) with Bill Redirect software.**

**Step #1 (General)**



**Disable all except the TCPIP section  
Set the switch TCPIP to: Off**

## Step #2 (File Configuration)



Click on button: **Configuration**

Activate the option: **Client**

Enter in the field “IP address”: **Your Bridge IP address**

*\* For example 10.1.200.11*

*\* To configure your Bridge IP address use the [www.symcod.com](http://www.symcod.com) software: Board Config (See Step #4)*

Enter in the field “Port”: **1024**

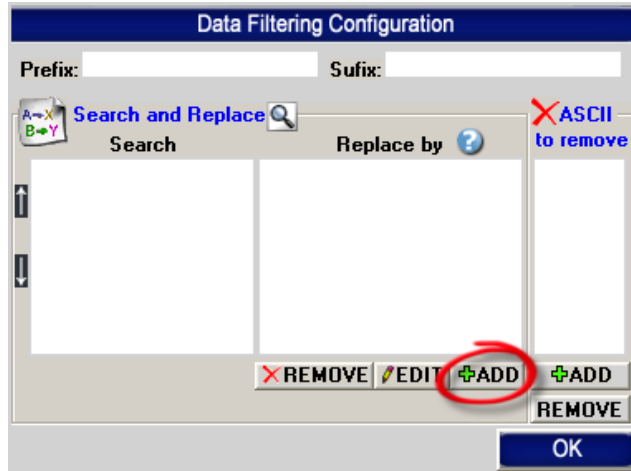
Enter in the field “ETX”: **13**

Click on button: **R**

## Step #3 (Users configuration)



Click on: **Configuration**



Click on button: **ADD**

In the field “**Search**” enter: **{ALL\_RX}**

In the field “**Replace by**” enter:

**{TX\_FILE[C:\DOOR\_LOG\_{CURDATE:DD-MM-YYYY}.TXT,{CURTIME} ORI\_DATA]}RX\_DATA**

## **Users access configuration** **To add a user who has access to that door**

Click on button: **ADD**

In the field “**Search**” enter the: **USER CARD NUMBER**

\* For example: **12345**

\* To activate the relay regardless of the card number, use this syntax: **{ALL\_RX}**

\* To activate the relay if the card start with 233, use this syntax: **{START\_WITH}233**

In the field “**Replace by**” enter: **{TX\_TCP[><T1T05]}**

\*The command **{TX\_TCP[><T1T05]}** is to open the Bridge IP relay number 1 during 5 seconds.

**Repeat this sequence to add other users.**



Click on button: **Save Configuration**

**Step #4** (*Symcod product Bridge IP configuration*)

Via [www.symcod.com](http://www.symcod.com) website download and install the software:

**Board Config**

**In Board Config software click on the line corresponding to your Bridge IP product**

**In the field IP:** Enter the IP address to be given to your Bridge IP.

*\* It must be in the same IP range as your computer.*

*(Contact you network administrator)*

**Activate the option: Bridge**

**Activate the option: 400**

**Click on button: Save Configuration**

If you've followed the steps:

You should see the cards NUMBER appear in Bill Redirect Software section “DEBUGGER”

At this step, if Bill Redirect Software receives a valid card number (*entered in step # 3*), it will activate the relay for a period of 5 seconds. If you listen carefully, you can hear the change of state of the relay.

**For more information about the Bridge IP**  
download the **MANUAL** via [www.symcod.com](http://www.symcod.com) or contact Symcod technical support team.

**Step #5** (To control multiple doors with Bill Redirect use this optional step)

To control multiple doors, you must start some instance of Bill Redirect Software.  
Use this syntax: Bill\_Redirect\_Serial\_to\_KB.exe /#INSTANCE\_NAME#

Each instance can have a different configuration !

**Example: Create a Shortcut instance Door\_001**

- Create a shortcut on your desktop to start BillRedirect software

Shortcut properties:

- In the first field (Target) enter:

"C:\Program Files\BillProduction\Bill Redirect Serial COM Port to Keyboard Buffer\Bill\_Redirect\_Serial\_to\_KB.exe" /#Door\_001#

- Start my software with this shortcut

**Example: Create a Shortcut instance Door\_002**

- Create a shortcut on your desktop to start BillRedirect software

Shortcut properties:

- In the first field (Target) enter:

"C:\Program Files\BillProduction\Bill Redirect Serial COM Port to Keyboard Buffer\Bill\_Redirect\_Serial\_to\_KB.exe" /#Door\_002#

- Start my software with this shortcut

To duplicate the users cards numbers configuration from Door\_001 to Door\_002  
use this command directly at Dos or via a batch file:

Copy C:\BillProduction.CFG\_Door\_001\TOUCHE\*.\* C:\BillProduction.CFG\_Door\_002 /Y

**For more documentation visit:**

**<http://www.billproduction.com/documentation.html>**

**If a problem persist ...**

**Software configuration and integration service**

**It's free, fast, and efficient !**

**Submit your case to [info@billproduction.com](mailto:info@billproduction.com)**

**and receive a customized answer !**





## PERSONALIZE

You can personalize my software with your company name, logo, skins, password, directory... With this possibility you can distribute my software with your company information ! The end user, will think that you are the creator of this software !

- To Extract the current configuration setting, just type in the field password: **SAVE\_SKIN**
- After this action, a message box appear to indicate where is the configuration.
- Now you can modify this configuration files for what you want (Skin\*.\*)).
- To re-load your skin modification type in the password field: **LOAD\_SKIN**

*\*At startup my software load automatically your configuration*

*\*To open the mouse position monitor, type **MOUSE** in the field password and move the main window in the left top corner.*

How change the default configuration directory:

*\*By default the configuration of my software is in the directory: C:\BillProduction.CFG\*

To change this directory:

- In the same directory that my .exe application or in your C:\ modify the file: **BPCFGDIR.TXT**

*\* This file contain the default configuration directory.*

*\* Several BillRedirect softwares in differents computers, can use the same directory over the network. If the configuration changed in a computer, then other computers automatically synchronize in the next 5 seconds.*

*All the configuration is by default in C:\BillProduction.cfg\\*.\* then to duplicate the configuration from a computer to another, just copy this directory.*

*\* Don't forget to close Bill Redirect on target computer before copy the configuration.*



For more flexibility/options or an installation package build for your company:

[info@BillProduction.com](mailto:info@BillProduction.com)

*\*Also available on request, all our advertising (PDF format) are available in source mode (Document Word), send your request by e-mail to: [info@BillProduction.com](mailto:info@BillProduction.com)*