



Bill Redirect Software

How redirect Dimmer III

(Automatic Package Dimensioning Solutions)

From: www.everydayshipping.com

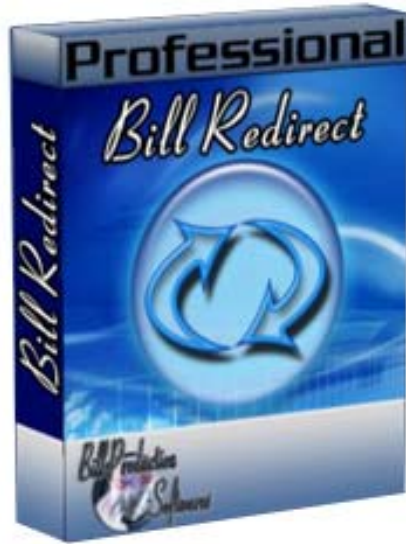


Use this documentation with the product : Bill Redirect Version 8.0H or more.
(Rev.: 19/06/2012)

Our Internet site: <http://www.billproduction.com/>

Email: info@BillProduction.com

SOFTWARE DESCRIPTION



Bill Redirect software communicates directly with the Dimmer and send the dimensions of your package to your existing software as if you have entered at the keyboard. Our software can support any keyboard sequence like Tab, Enter between before and after each dimension (*Length, Width and Height*).

No programming required works with your current application !

Supported Operating Systems: Windows 98, Me, 2000, 3000, XP, NT4, Vista and Windows 7.



- Oversize is being eliminated and dimensional calculations will be a requirement of almost every package you ship.
- The Dimmer can be installed by itself on your existing packing table.
- Easily capture parcel dimensions with Dimmer III sensors and Bill Redirect software.
- Can be integrated with any shipping software.
- One second sensor dimensional read times are some of the fastest in the industry.

 GENERAL INFORMATION

To configure this software you have to enter in the field password www.billproduction.com. In the configuration options you have the possibility to change this password for what you want. To close this software, type **END** in the password field.



**If a problem persist or to do more
use our
Software configuration and integration service
It's free, fast (*usually the same day*), and efficient !
Submit your case to info@billproduction.com
and receive a customized solution !**

Solution

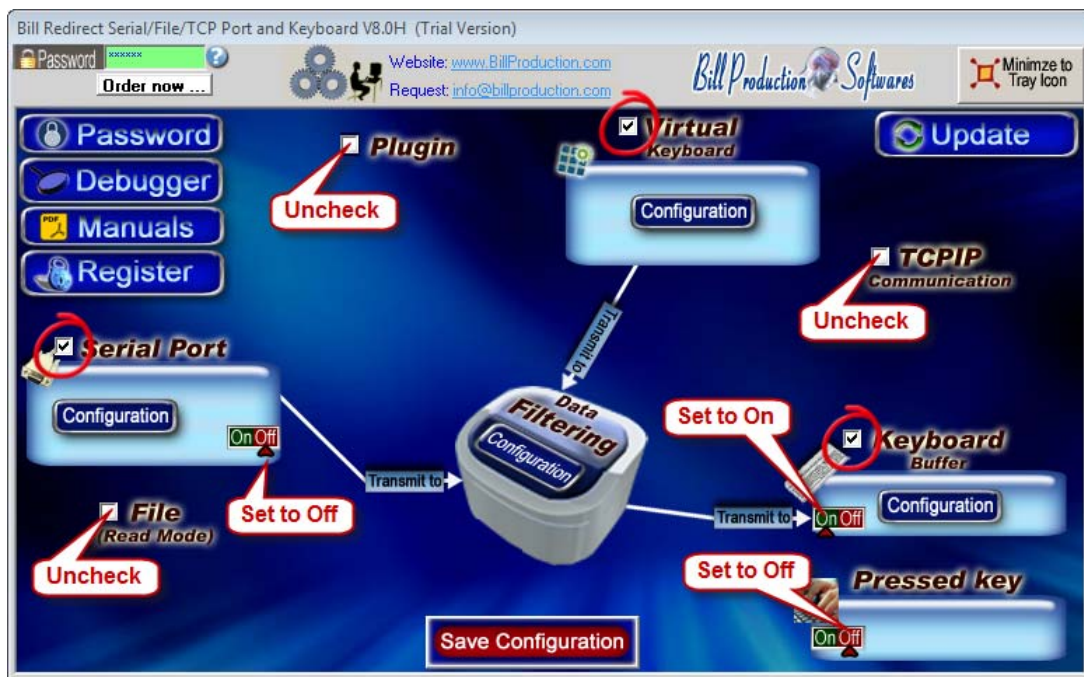
To redirect the Dimmer III communication to keyboard buffer

Step #1 (General configuration)

Download and install Bill Redirect software:

http://www.billproduction.com/Bill_COMtoKB.ZIP

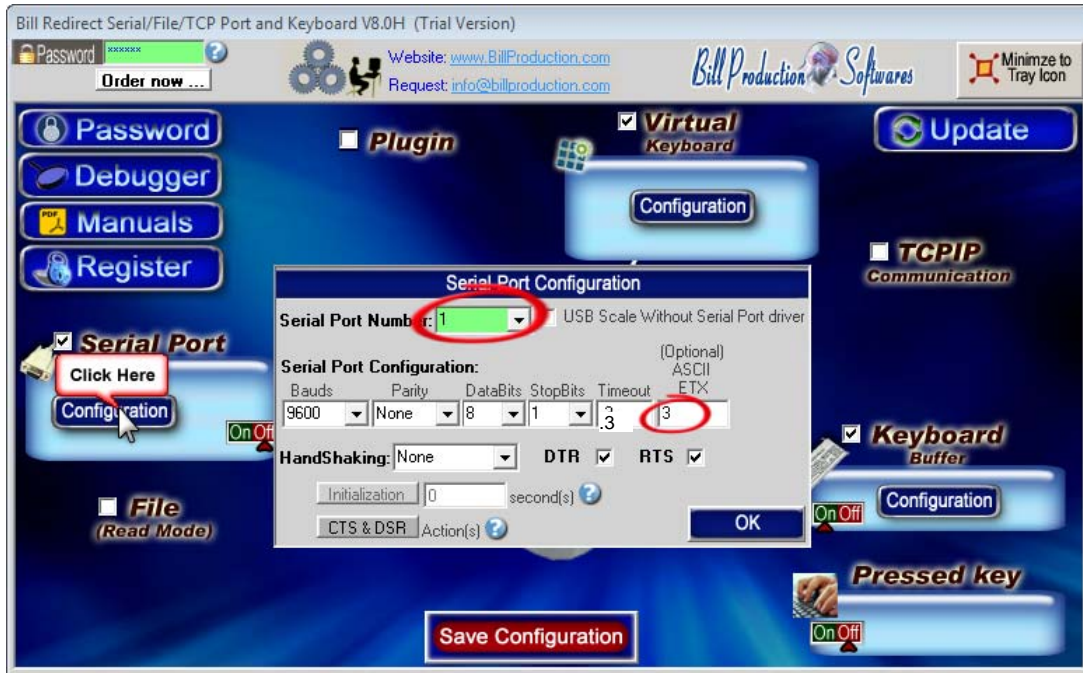
**To access the configuration, enter the 'Password' field: www.billproduction.com*



Disable all except the **Serial Port** , **Keyboard Buffer** and **Virtual Keyboard** sections

In the section “**Serial Port**” and “**Pressed key**” set the switches to: **Off**

Step #2 (Serial port configuration)



Click on button: **Configuration**

Enter the **Serial Port Number** where your Dimmer is connected.

** If the back color field is GREEN, it's because the COM is present and available.*

Serial Port Configuration: Enter the configuration of your Dimmer.

Enter in field **Bauds:** **9600**

Enter in field **Parity:** **None**

Enter in field **DataBits:** **8**

Enter in field **StopBits:** **1**

Enter in field **Timeout:** **.3**

Enter in field **ETX:** **3**

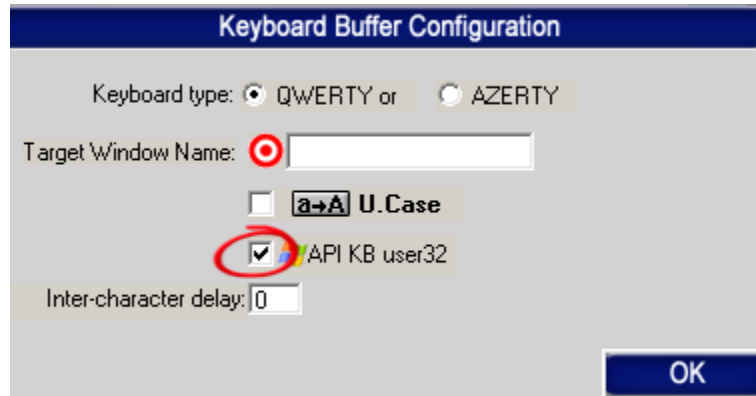
Set the **HandShaking** to: **None**

Activate the options: **DTR** and **RTS**

Step #3 (Keyboard configuration)



Click on button: [Configuration](#)



Activate the option: [API KB user 32](#)

The QWERTY option:

Select this option if you use a QWERTY keyboard.

**If your keyboard is QWERTY you can see just across the letter Q the letters WERTY*

The AZERTY option:

Select this option if you use a AZERTY keyboard.

**If your keyboard is AZERTY you can see just across the letter A the letters ZERTY*

The Target Windows Name (optional):

With this option you can activate automatically a target windows.

Enter the title of the window where you want redirect the data

* If you enter nothing, the software redirect the data to the current window.

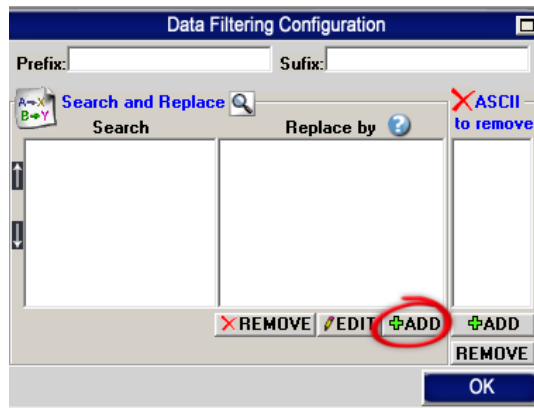
* You can enter just a part of the title, for example if the title is “[my application software](#)” you can enter just a part of the title for example: [my application](#)

Step #4 (How the dimensions will be sent)

Configuration of how the dimensions will be sent to your application as if you have entered at the keyboard... Long Width and Height



Click on: [Data Filtering Configuration](#)



In section **Search and Replace** click on: [ADD](#)

Enter in **Search** window: [{SERIAL_RX}](#)

Enter in **Replace by** window:

`{TAB}{MULTIPLY[{STRING_MID[RX_DATA,2,3]},1,#]}{TAB}{MULTIPLY[{STRING_MID[RX_DATA,5,3]},1,#]}{TAB}{MULTIPLY[{STRING_MID[RX_DATA,8,3]},1,#]}{ENTER}`

means Length means Width means Height

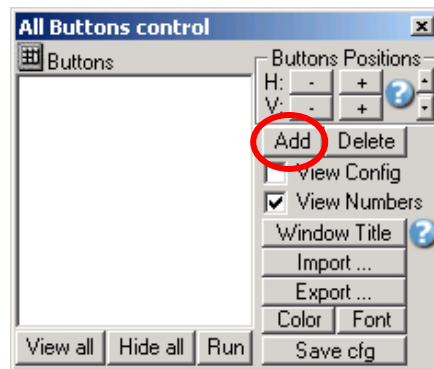
*You can add or remove **{TAB}** and **{ENTER}** in this string depending of what you want to receive.*

Step #5 (Virtual button configuration)

Create a Virtual Button to request the dimension from your Dimmer



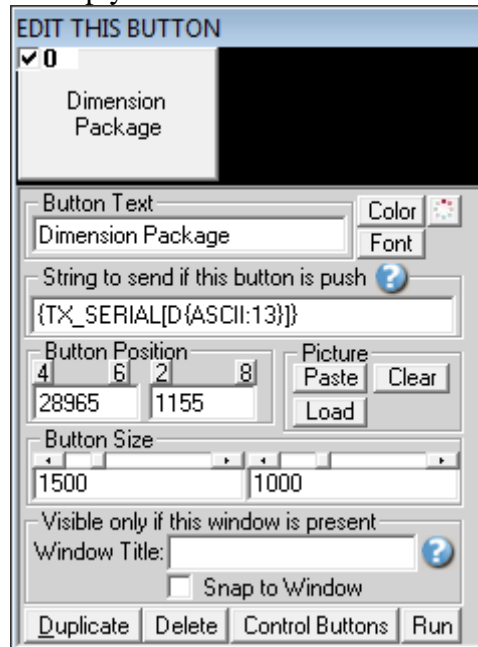
Click on button: [Configuration](#)



To create the button, click on button: [Add](#)

Step #6 (Virtual button configuration)

At this step you can see a button like this one:



* To see the configuration of the button activate the upper left check box

Enter in field **Button Text:** **Dimension Package**

Use this field to set what you want to see on the button.

Enter in field **String to send ... is push:** **{TX_SERIAL[D{ASCII:13}]}**

Button Position: Use this section to change button position.

** Tips: Activate the NumLock Click the button and use the number 4,6,2 and 8 to change the position.*

Button Size : Use this section to change the button size.

Step #7 (*Optional* virtual button configuration)

Example:

EDIT THIS BUTTON

0

Dimension Package

Button Text: Dimension Package Color Font

String to send if this button is push: {TX_SERIAL[D{ASCII:13}} ?

Button Position: 4 6 2 8 28965 1155 Picture Paste Clear Load

Button Size: 1500 1000

Visible only if this window is present: Window Title: ?

Snap to Window

Duplicate Delete Control Buttons Run

Window Title (*optional*):

Option “Window Title” Description: With this option the button can appear and disappear when a specific window title is activate.

*Example: If the window title is “Application shipping expert Version 1.2b” and in the field “Window Title” you enter “shipping EXPERT” then each time that this window take the focus this button is visible.

* To enter more of one window title, separate the title name by a comas:

Example: shipping EXPERT, NOTEPAD, PAGE COUNT

* If this the field “**Window Title**” is blank, then the button is always visible.

Color (*optional*): Use this option to change the button back color.

Font (*optional*): Use this option to change the button text font.

Picture (*optional*): Use this section to:

[Paste](#) the picture from the ClipBoard to the button.

[Clear](#) the picture button.

[Load](#) the picture button.

Step #8 (*Optional* hotkey to request the dimensions)

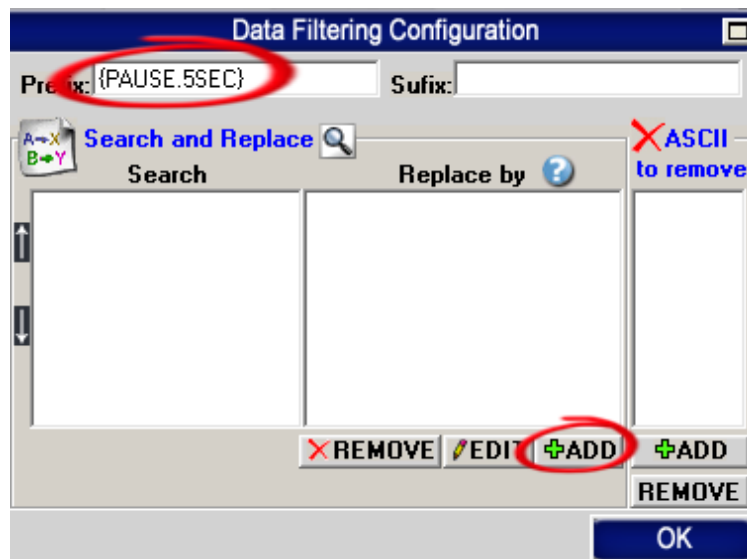
This **optional** step will allow you to request the dimensions via a hotkey for example F11.



Section “Pressed key” set the switch to position: **On**



Click on: **Data Filtering Configuration**



Enter in field “Prefix”: **{PAUSE.5SEC}**

Click on: **ADD**

Enter in field “Search”: **{F11}**

** You can replace the hotkey {F11} by what you want example {ALT}{F10}*

Enter in field “Replace by”: **{TX_SERIAL[D{ASCII:13}]}**

Step #9 (Test)



Test your Dimmer

Save Configuration

- On main screen click on button: **Save Configuration**

Click on button: **Run**
Open the Windows **NotePad**
Click on your: **Virtual Button**

Examples of what you should receive:

14 10 8



**If a problem persist or to do more
use our
Software configuration and integration service
It's free, fast (usually the same day), and efficient !
Submit your case to info@billproduction.com
and receive a customized solution !**

For more documentation visit:



<http://www.billproduction.com/documentation.html>