



Virtual Serial Port over Ethernet with HWgroup VSP

Documentation: 25/02/2014



Using HW VSP powered by HW group



<http://www.HW-group.com>

Free HW Virtual Serial Port: http://www.hw-group.com/products/hw_vsp/index_en.html

Bill Redirect Software: http://www.billproduction.com/Bill_COMtoKB.ZIP

<http://www.billproduction.com/>

Email: info@BillProduction.com

SOFTWARE DESCRIPTION



This free resident HW Virtual Serial Port software create a Virtual Serial Port that you can open with your current application software. This Virtual Serial Port communicate with Bill Redirect via a TCP connection.

How create a Virtual Serial Port with to monitored, spy, listen, edit, send to a file, filtering, analyze and/or convert the data protocol received from your peripheral.

Supported Operating Systems: Windows 98,Me,2000,3000,XP,NT4,Win7 (32/64 bits),Win8 (32/64 bits)

 GENERAL INFORMATION

*** The free HW Virtual Software work's with Bill Redirect version 8.0V and more.**
Don't forget to push the Save Configuration button to save your current setting.

To configure Bill Redirect software you have to enter in the field password www.billproduction.com. In the configuration options you have the possibility to change this password for what you want. To close the software, type **END** in to the password field.



**If a problem persist or to do more
use our
Software configuration and integration service
It's free, fast (*usually the same day*), and efficient !
Submit your case to info@billproduction.com
and receive a customized solution !**



CONFIGURATION

To connect your software with HW Virtual Serial Port to filtering, analyze and convert the data protocol with Bill Redirect software.

HWgroup



Virtual Serial Port

Step #1 (General configuration)

First close your application software that use the serial port where your peripheral is connected.

Download and install Bill Redirect software **8.0V or more**:

http://www.billproduction.com/Bill_COMtoKB.ZIP

*To access the configuration, enter the 'Password' field: www.billproduction.com



Disable all sections except: **Plugin** and **Serial Port**

In section “**Plugin**” set the switch to: **On**

In section “**Serial Port**” set the switches to: **On**

Step #2 (Serial port configuration)



Click on button: **Configuration**

Enter the **Serial Port Number** where your Peripheral is connected.

** If the back color field is GREEN, it's mean the COM is present and available.*

Enter the configuration of your Scale in fields **Bauds**, **Parity** and **Databits**

** Important: Enter the configuration that is configured in your scale*

Enter in field **Timeout: .3**

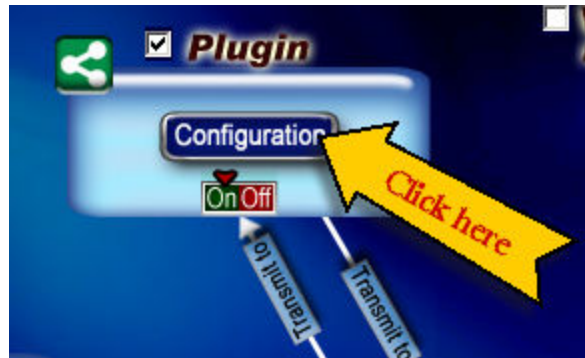
Leave blank the field: **ETX**

Set the **HandShaking** to: **None**

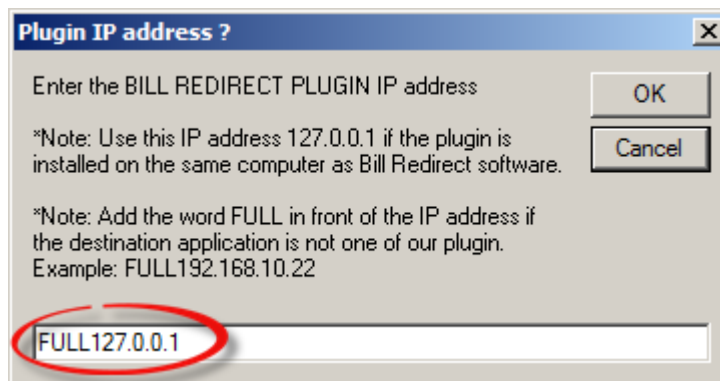
Activate the options: **DTR** and **RTS**

Click on button: **Save Configuration**

Step #3 (Plugin configuration)

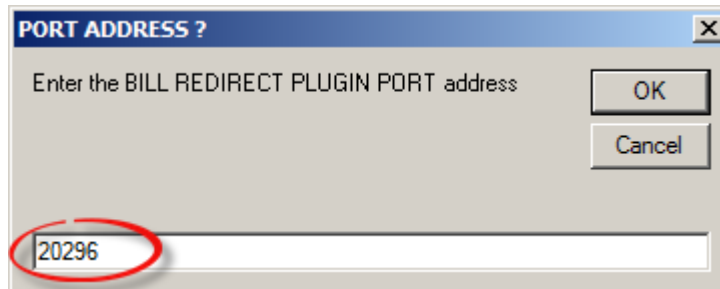


Click on button: **Configuration**



Enter in field: **FULL127.0.0.1**

Click on button: **OK**



Enter in field: **20296**

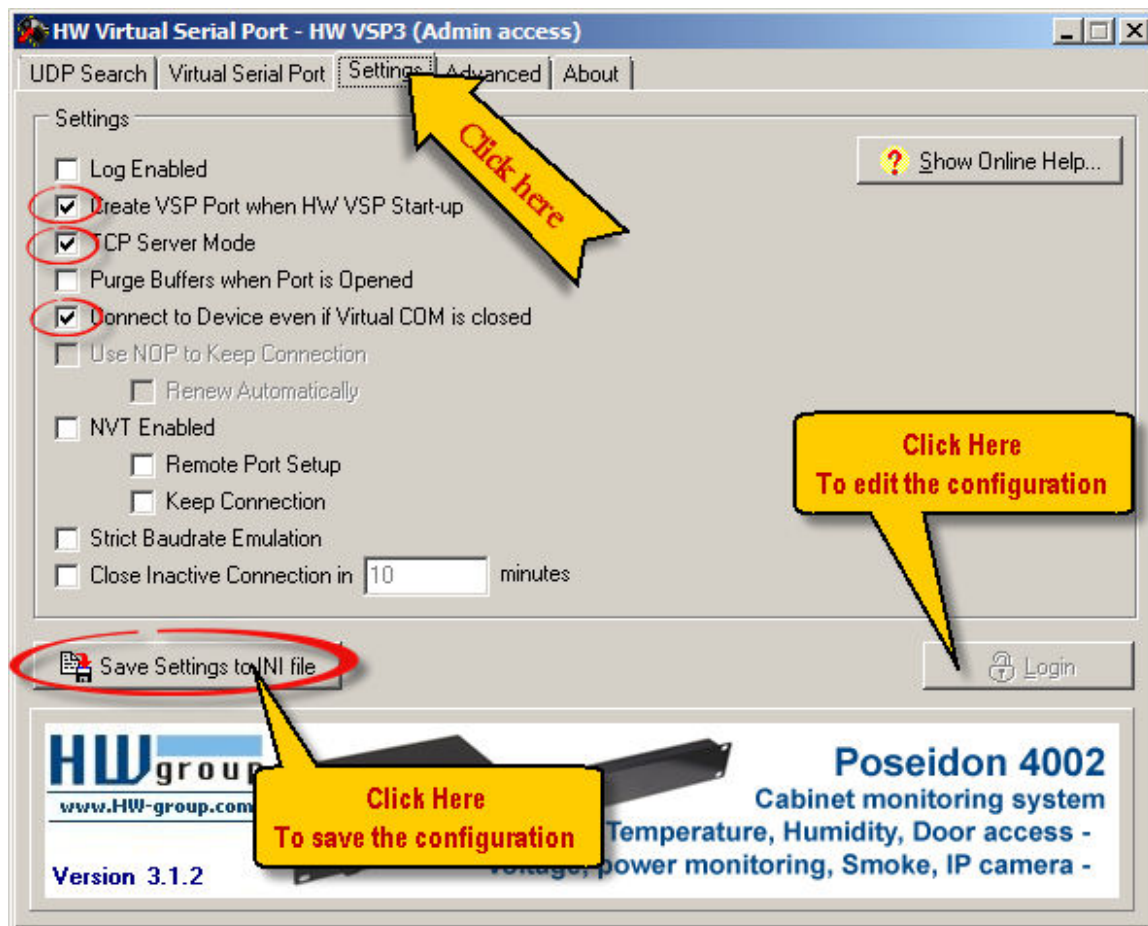
Click on button: **OK**

Step #4 (HWgroup Virtual Serial Port Setting)

Download and install HWgroup Virtual Serial Port software:



http://www.hw-group.com/products/hw_vsp/index_en.html



Select the section: **Settings**

To edit the configuration click on button: **Login**

Uncheck all except:

- Create VSP Port when HW VSP Start-up
- TCP Server Mode
- Connect to Device event if Virtual COM is closed

Click on button: **Save Settings to INI file**

Step #5 (HWgroup Virtual Serial Port Configuration)

HW Virtual Serial Port - HW VSP3 (Admin access)

UDP Search Virtual Serial Port

General

Port Name: COM15 <=> IP Address: 127.0.0.1 Port: 20296

External NVT Commands Port: 2003

VSP Deleted

Status: Closed

Counters

	VSP:	LAN:	QUEUE:
Rx:	0	0	0
Tx:	0	0	0

Create COM Delete COM Login

HWgroup www.HW-group.com Version 3.1.2

HWgroup-ER88a I/O Controller

port (RS-232/485) & I/O over Ethernet

Digital Inputs for Dry contacts

Digital Outputs for Relays

Select the section: **Virtual Serial Port**
Select the COM you want create: **COM...**

***** This COM will be used by *your application*.**

In field "IP Address" enter: **127.0.0.1**

In field "Port" enter: **20296**

Click on button: **Create COM**

Return in section **Settings** and click on button : **Save Settings to INI file**

Step #6 (Your application software... Configuration)

Start your application software

**In your Application Software, change the Serial Port Number to:
Use the Virtual Serial Port Created at “Step #5” COM??**

At this step the communication pass through our software Bill Redirect and the data can be:
filtered, analyzed and converted... via the section: Data Filtering Configuration



For more information about available command use Bill Redirect Instruction manual:
http://www.billproduction.com/Bill_Redirect_Manual.pdf



**If a problem persist or to do more
use our
Software configuration and integration service
It's free, fast (usually the same day), and efficient !
Submit your case to info@billproduction.com
and receive a customized solution !**

Web: www.BillProduction.com

Email: info@BillProduction.com