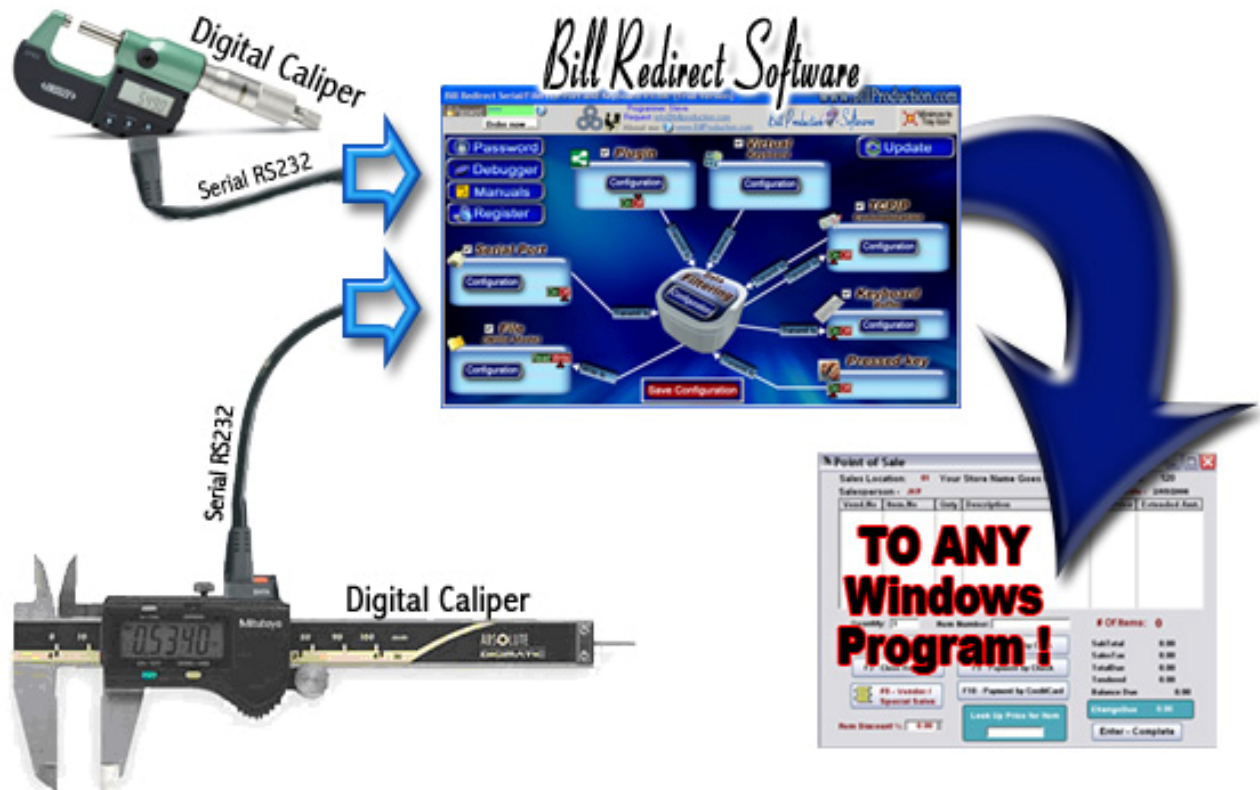


Bill Production Softwares

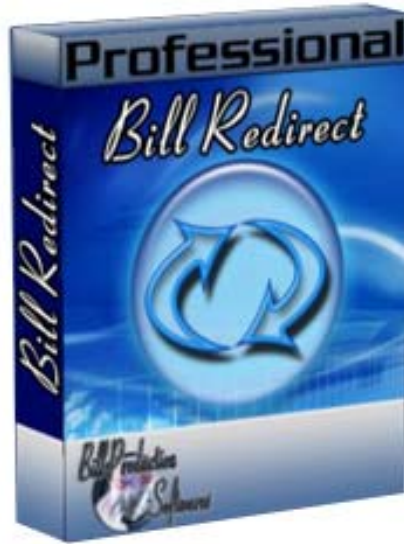
Bill Redirect Software How redirect Digital Calipers or Micrometer Gage Compatible with Mitutoyo products (Pied à Coulisse digital)



Use this documentation with the product : Bill Redirect Version 5.0X or more (Rev.: 27/02/2013)
Digital Calipers Software Mitutoyo / Logiciel pour Pied à coulisse Mitutoyo (Serial Port RS232):
<http://www.billproduction.com/Digital%20Calipers%20-%20Pied%20a%20Coulisse%20Digital/index.html>

Email: info@BillProduction.com

SOFTWARE DESCRIPTION



**BillRedirect software support all kind of RS232 Digital Calipers !
This professional multi serial port software enables RS232/WiFi Calipers to
communicate with your current Windows applications. Bill Redirect allows
information to be entered directly into Windows programs as if it was typed in using
the keyboard.**



- **The measure can appear on a virtual button.**
- **The measure can be sent directly in your application.**
- **The measure can be sent directly to Excel**
- **Compatible with Mitutoyo products.**

No programming or additional hardware required !

Supported Operating Systems: Windows 98, Me, 2000, 3000, XP, NT4, Vista, Windows 7, Windows 8

Simply the best Digital Calipers software available !

GENERAL INFORMATION

To configure this software you have to enter in the field password www.billproduction.com. In the configuration options you have the possibility to change this password for what you want. To close this software, type **END** in the password field.

To use some peripheral, for example 2 Calipers, start some instance of the software.
Use this syntax: `Bill_Redirect_Serial_to_KB.exe /#INSTANCE_NAME#`

Each instance can have a different configuration !

Example: Create a Shortcut instance Caliper_001

- Create a shortcut on your desktop to start BillRedirect software

Shortcut properties:

- In the first field (Target) enter:

`"C:\Program Files\BillProduction\Bill Redirect Serial COM Port to Keyboard Buffer\Bill_Redirect_Serial_to_KB.exe" /#Caliper_001#`

- Start my software with this shortcut

Example: Create a Shortcut instance Caliper_002

- Create a shortcut on your desktop to start BillRedirect software

Shortcut properties:

- In the first field (Target) enter:

`"C:\Program Files\BillProduction\Bill Redirect Serial COM Port to Keyboard Buffer\Bill_Redirect_Serial_to_KB.exe" /#Caliper_002#`

- Start my software with this shortcut

Don't forget to push the Save Configuration button to save your current configuration.



**If a problem persist or to do more
use our
Software configuration and integration service
It's free, fast (*usually the same day*), and efficient !
Submit your case to info@billproduction.com
and receive a customized solution !**

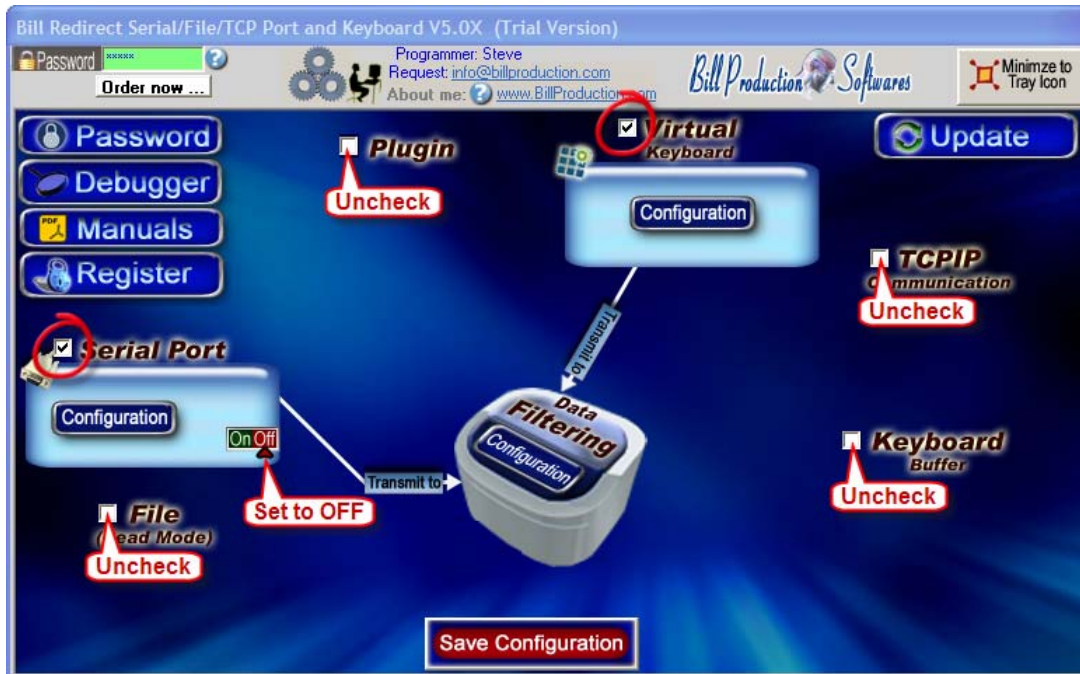
Contact by email: info@billproduction.com

Configuration step by step

To redirect a Serial RS232 Digital Caliper or Micrometer Gage to your application *(Compatible with Mitutoyo products)*

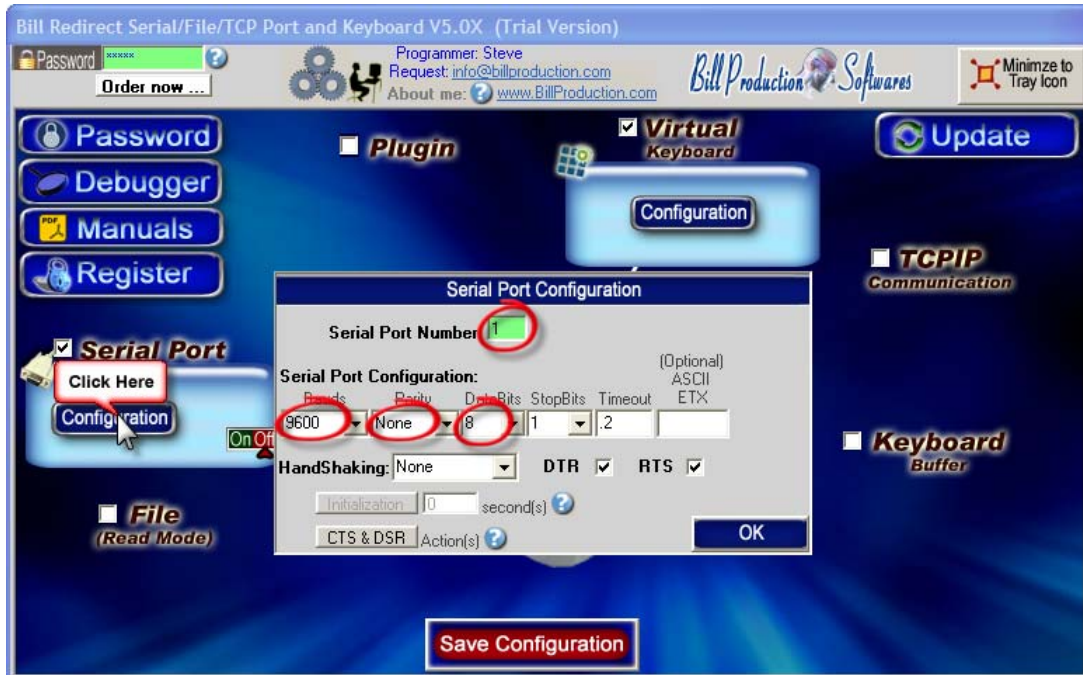
(If your peripheral is USB you must install the Virtual Serial Port provided by the manufacturer)

Step #1 (General)



Disable all except the **Serial Port** and **Virtual Keyboard** sections
Set Serial Port to: **OFF**

Step #2 (Serial Port Configuration)



Click on button: **Configuration**

Set the HandShaking to: **NONE**

Activate the options: **DTR** and **RTS**

Enter the **Serial Port Number** where your Caliper is connected

If the back color field is GREEN, it's because the COM is present and available.

Enter the configuration of your Barcode Reader:

Bauds, Parity and DataBits

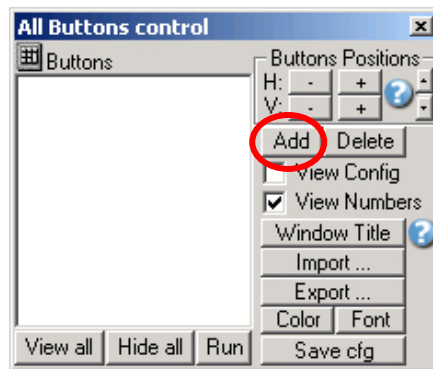
**This information is in your product manual*

Step #3 (Virtual Button)

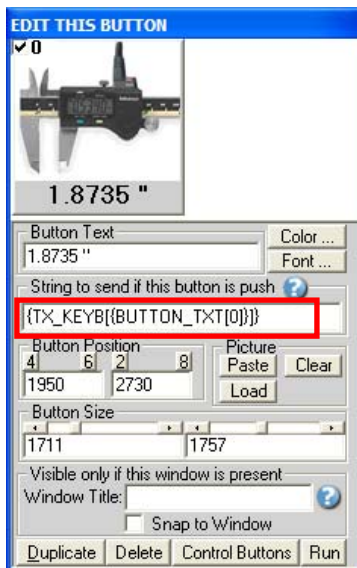
Create a Virtual Button to receive the Measure from your Caliper



Click on button: [Configuration](#)



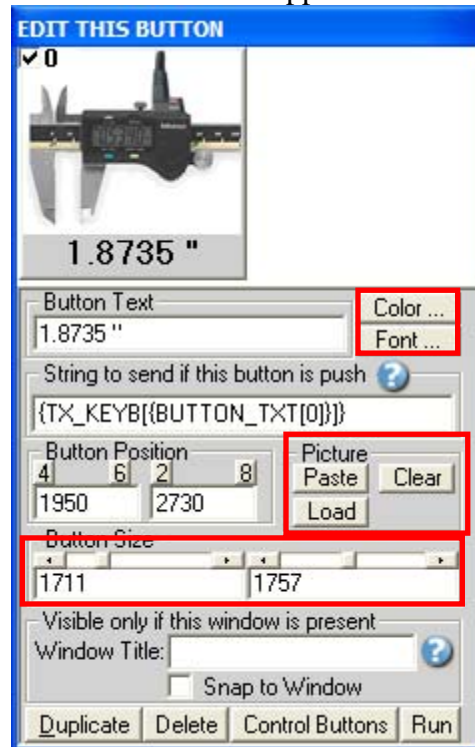
To add a New button, click on button: [Add](#)



Enter in field “String to send if this button is push”: [{TX_KEYB\[{BUTTON_TXT\[0\]}}](#)

Step #4 (Appearance ***Optional*)

Virtual button appearance:



Button Text: Use this field to set what you want to see on the button.

Button Position: Use this section to change button position.

** Tips: Activate the NumLock Click the button and use the number 4,6,2 and 8 to change the position.*

Button Size : Use this section to change the button size.

Window Title (optional):

Option “Window Title” Description: With this option each button of your Virtual Keyboard can appear and disappear when a specific window title is activate.

*Example: If the window title is “Application measure expert Version 1.2b” and in the field “Window Title” you enter “Measure EXPERT” then each time that this window take the focus this button is visible.

* To enter more of one window title, separate the title name by a comas:

Example: Measure EXPERT, NOTEPAD, PAGE COUNT

* If this the field “**Window Title**” is blank, then the button is always visible.

Color (optional): Use this option to change the button back color.

Font (optional): Use this option to change the button text font.

Picture (optional): Use this section to:

[Paste](#) the picture from the ClipBoard to the button.

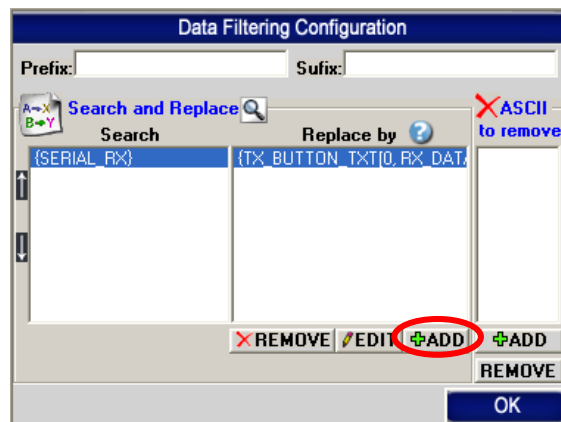
[Clear](#) the picture button.

[Load](#) the picture button.

Step #5



Click on: **Configuration**



Click on button: **ADD** and choose one of three options ...

Option To receive the value only on the virtual button use this rule:

In the field “Search” enter: **{SERIAL_RX}**

In the field “Replace by” enter: **{TX_BUTTON_TXT[0,RX_DATA]}**

or

To receive the value on the button and on Keyboard Buffer as if it had been typed at the keyboard:

In the field “Search” enter: **{SERIAL_RX}**

In the field “Replace by” enter: **{TX_BUTTON_TXT[0,RX_DATA]}{TX_KEYB[RX_DATA]}**

or

To receive the value on Keyboard Buffer ONLY as if it had been typed at the keyboard:

In the field “Search” enter: **{SERIAL_RX}**

In the field “Replace by” enter: **{TX_KEYB[RX_DATA]}**

On main screen, disable the section: Virtual Keyboard



IMPORTANT At this point the Data Filtering must contain only one rule

Step #6 (Test)



TEST YOUR Digital Caliper

On Main Screen click on: [Save Configuration](#)



Click on button: [Minimize button](#)
[Connect and start your Caliper](#)

If everything works well, you should see the measure in real-time directly on the virtual button and or on where your cursor is...

Open the Windows: [NotePad](#)
Click on your: [Virtual Button](#)

Examples of what you should receive on the button:

01A+001.8735
47, 1.8735, ,01
1.8735,inch,A

[If nothing appear, try to click on button directly on your Caliper](#)



When you click on Caliper button depending of your configuration

- **The measure should appear on the virtual button.**
**When this button is clicked, the measure should be sent to the current application.*
- **The measure should appear where the cursor is.**



If a problem persist or to do more
use our
Software configuration and integration service
It's free, fast (usually the same day), and efficient !
Submit your case to info@billproduction.com
and receive a customized solution !

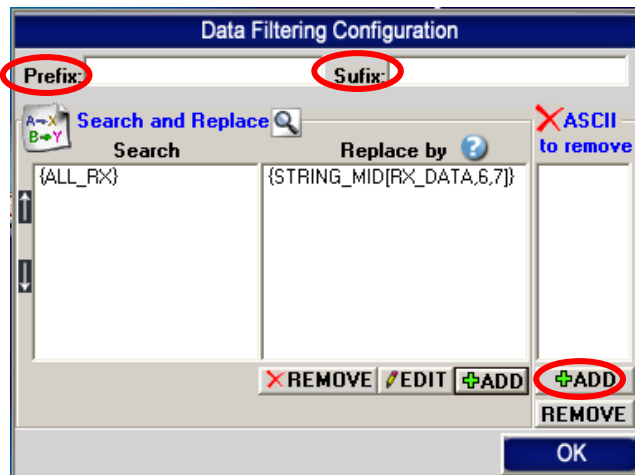
Step #7 (Optional)



DATA FILTERING CONFIGURATION



Click on: **Configuration**



The Prefix/Suffix (optional):

When the software receive data from the Caliper, it add the PREFIX at the beginning of data and the Suffix at the end.

[Prefix][data from a peripheral][Suffix]

The Prefix and the Suffix can contain any characters and or commands that you want.

*See possible commands section in the bill redirect manual http://www.billproduction.com/Bill_Redirect_Manual.pdf

*Example {TAB}{ENTER}

The Remove ASCII section (optional):

With this section you can remove ASCII characters directly from the received measure.

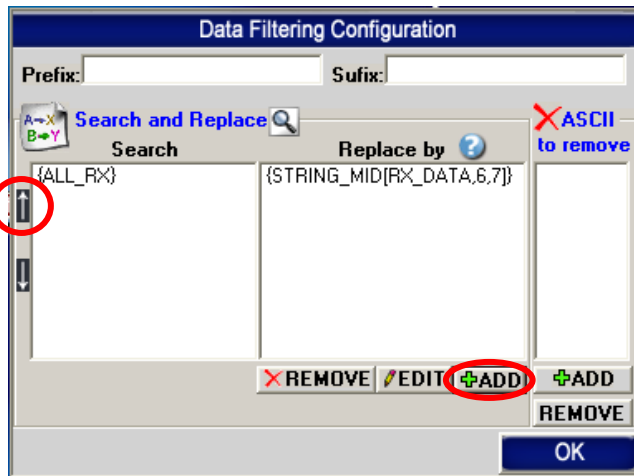
With the button Add you can add a new ASCII characters from 0 to 255.

*For example: To remove Enter, ADD: 13

*For example: To remove Line Feed, ADD: 10

*For example: To remove Spaces, ADD: 32

Step #8 (Optional Filtering examples)



Click on button **ADD** to add a rule
and move this new rule in first position with the **UP** arrow

Example 1: On all data received: From the position 6 extract 7 characters

Search	Replace by
{SERIAL_RX}	{STRING_MID[RX_DATA,6,7]}

Example 2: To remove the spaces

Search	Replace by
{ASCII:32}	

Example 3: To remove text: inch

Search	Replace by
01A+	

Example 4: To remove carriage return line feed

Search	Replace by
{ASCII:13}	
{ASCII:10}	

Example 5: To receive only the value

Search	Replace by
{ SERIAL_RX}	{MULTIPLY[RX_DATA,1,#.00]}

Example 6: On all data received: From the right extract last 5 characters

Search	Replace by
{ SERIAL_RX}	{STRING_RIGHT[RX_DATA,5]}

**To receive the data in real time directly to a existing Excel file
via DDE, use this free Plugin**



Install our Excel Plugin: http://www.billproduction.com/Plugin_DDE.zip
Use this documentation: http://www.billproduction.com/Bill_DDE_over_Ethernet.pdf

For more documentation visit:



<http://www.billproduction.com/documentation.html>



**If a problem persist or to do more
use our
Software configuration and integration service
It's free, fast (usually the same day), and efficient !
Submit your case to info@billproduction.com
and receive a customized solution !**