



Bill Redirect Scale and Multiply the weight received by 2 or by 3

Documentation: 09/11/2008



Use this documentation with the product : Bill Redirect 5.0J and more

Software configuration and integration service

It's free, fast, and efficient !

Submit your case to info@billproduction.com

and receive a customized answer !

Our Internet site: <http://www.billproduction.com/>

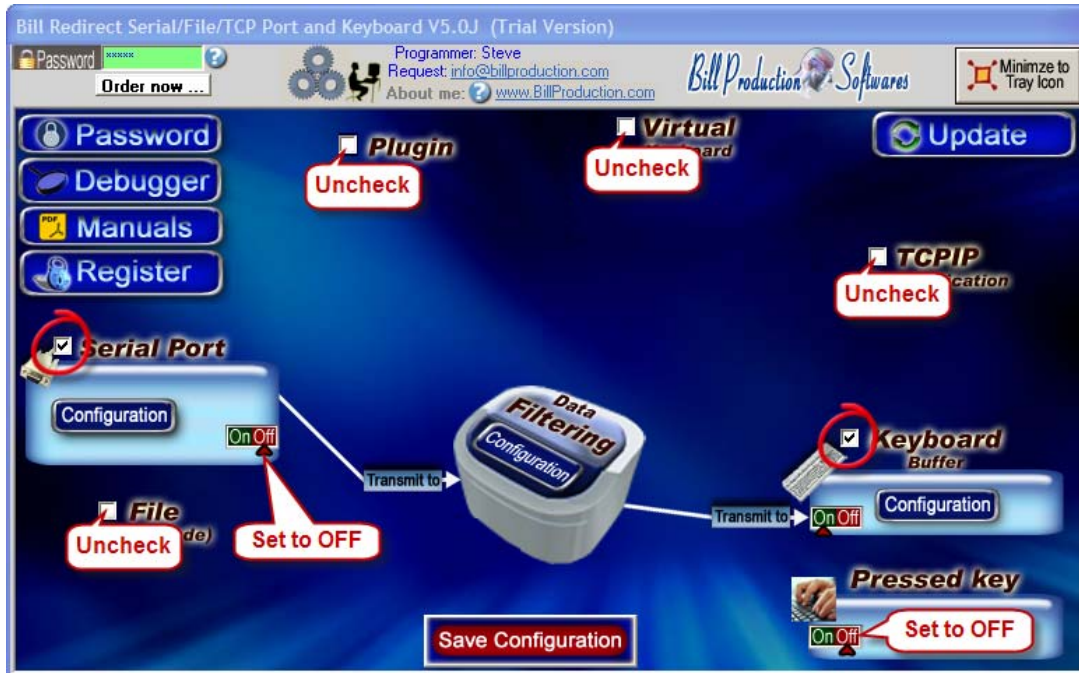
Email: info@BillProduction.com

Step #1

Download and install Bill Redirect software

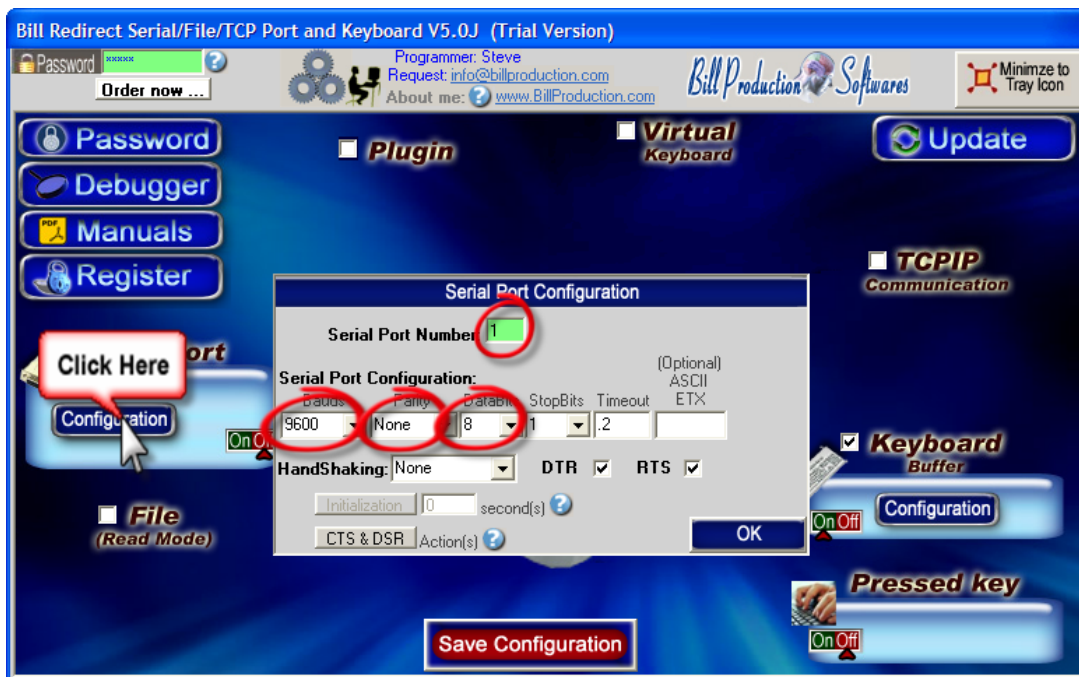
http://www.billproduction.com/Bill_COMtoKB.ZIP

Step #2



Disable all except the **Serial Port** and **Keyboard Buffer** section.
Set to **OFF** Serial Port and Pressed key **switch**.

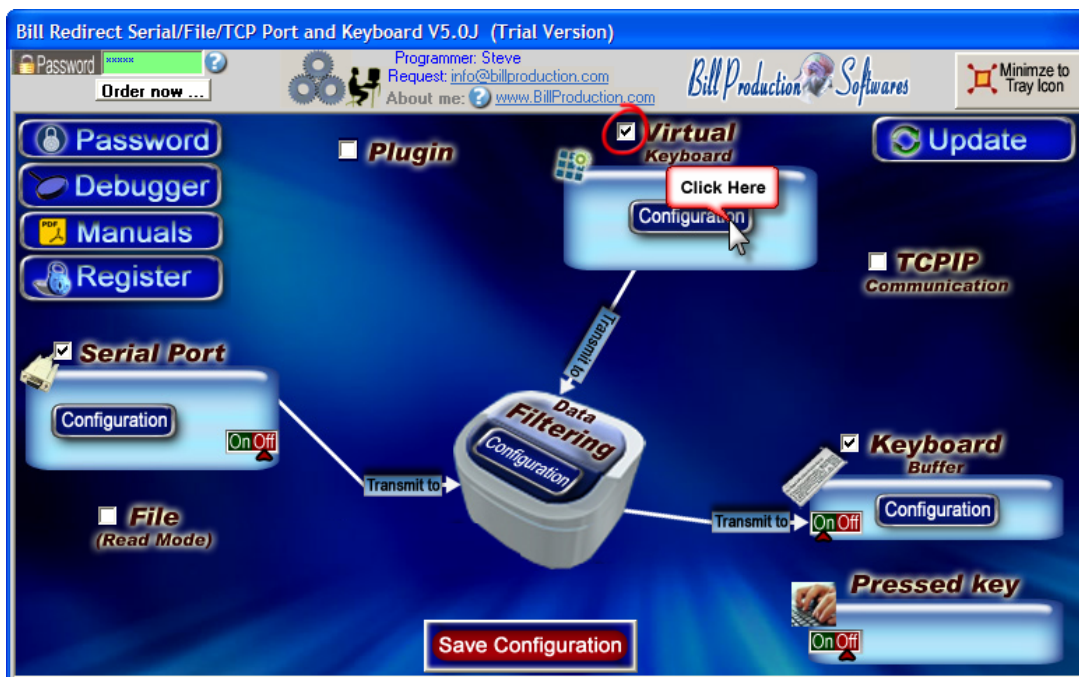
Step #3



Click on button: **Configuration**.
Enter the **Serial Port Number** where your Scale is connected.

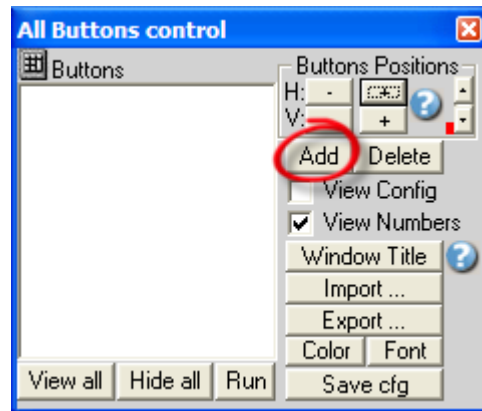
Serial Port Configuration: Enter the configuration of your Scale

Step #4

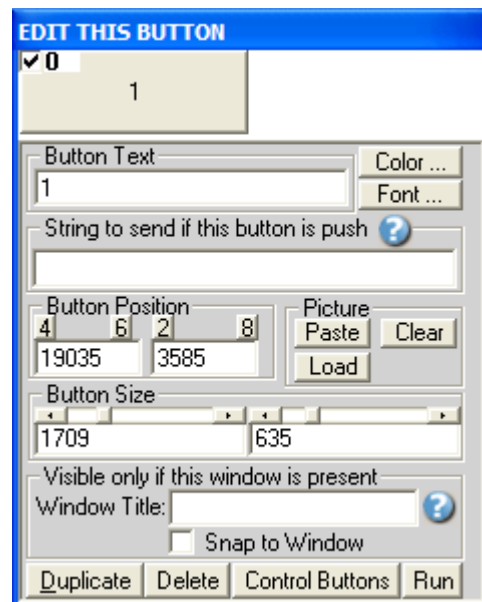


Enable the section: **Virtual Keyboard**
Click on button: **Configuration**

Step #5

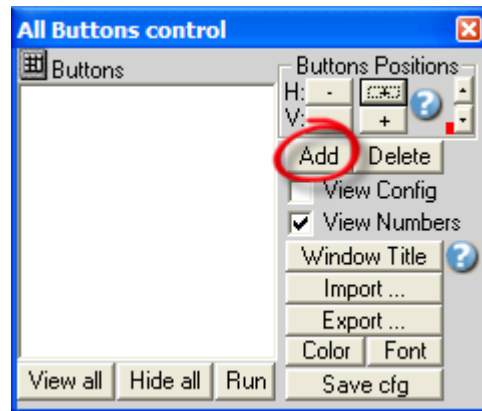


Click on button: Add

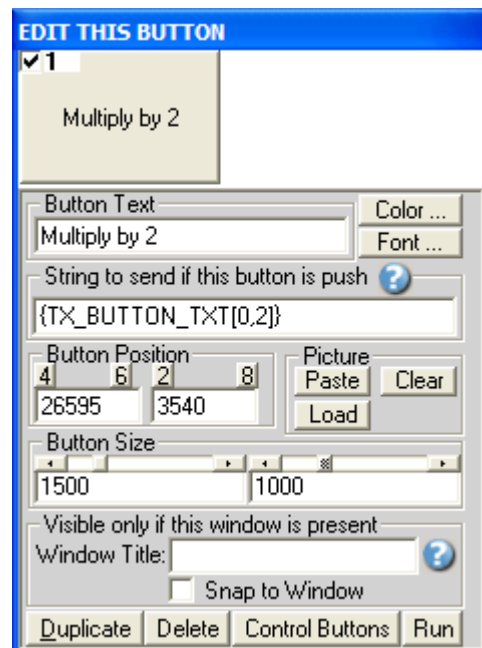


Enter in field Button Text: 1
Enter nothing in the field “String to send... is push”

Step #6

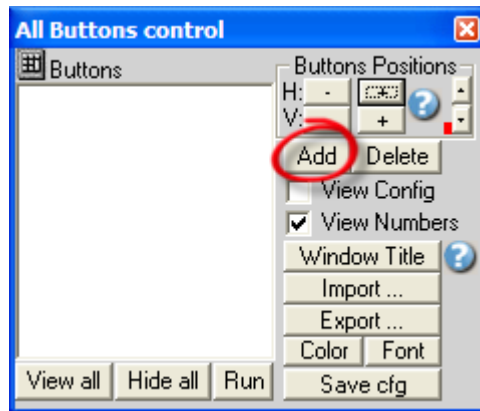


Click on button: **Add**



Enter in field **Button Text**: **Multiply by 2**
Enter in field “String to send... is push”: **{TX_BUTTON_TXT[0,2]}**

Step #7



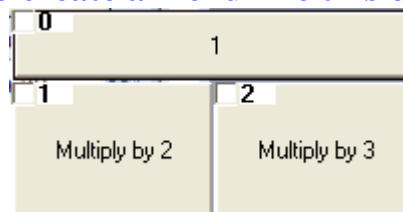
Click on button: **Add**



Enter in field **Button Text**: **Multiply by 3**

Enter in field “String to send... is push”: **{TX_BUTTON_TXT[0,3]}**

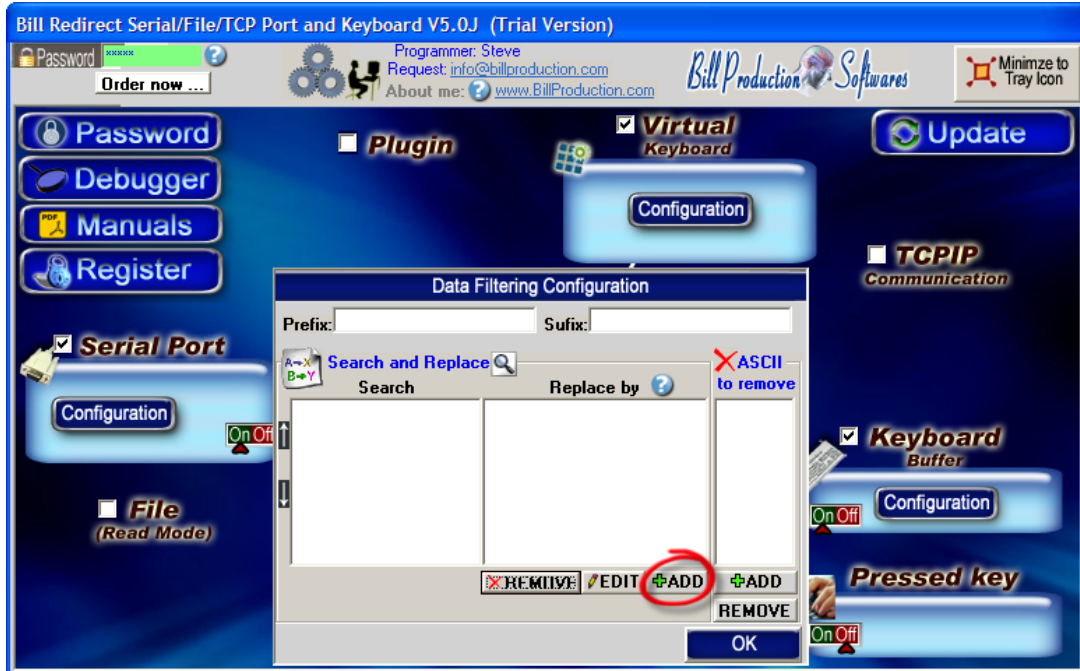
To create a menu like this one:



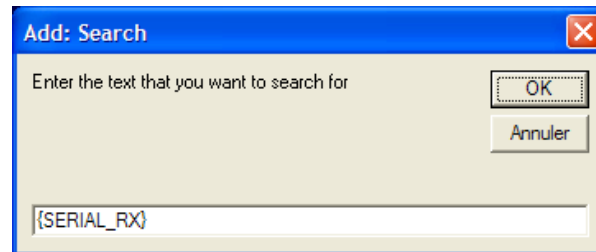
Step #8



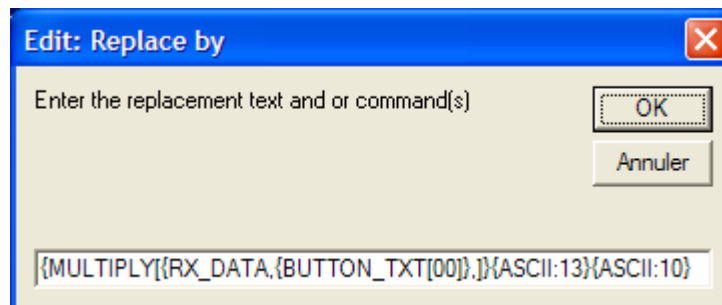
Click on button: **Configuration**



Click on button: **Add**



Enter in this field: **{SERIAL_RX}**



Enter in this field:

{MULTIPLY[{RX_DATA},{BUTTON_TXT[00]}.]}{ASCII:13}{ASCII:10}

Or to receive the value in a predefine format you can use this syntax:

{MULTIPLY[{RX_DATA},{BUTTON_TXT[00]},#.##]}{ASCII:13}{ASCII:10}

Step #9

A rectangular button with a dark blue background and the text "OK" in white, centered within the button.

Click on button: **OK**

A rectangular button with a red background and the text "Save Configuration" in white, centered within the button.

Click on button: **Save Configuration**

To test, directly on your Scale click on the button PRINT

At this Step:

- You can click on button “Multiply by 2” or “Multiply by 3”
- The weight received is automatically multiply by 2 or 3

For more information, consult the product manual:

http://www.billproduction.com/Bill_Redirect_Manual.pdf