



Documentation: 11/05/2010

## Bill Redirect Software

How control any Windows programs with your iPod Touch, iPhone or iPad  
Via a WiFi TCP connection

Application TCP/IP Remote  
By Michael Zinman



This solution  
works with

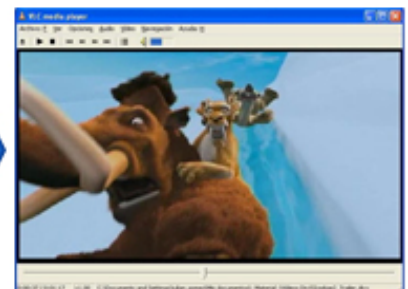
iPhone  
iPad  
iPod Touch



Bill Redirect Windows Software



Your Windows application





Use this documentation with the product : Bill Redirect 7.0D or more



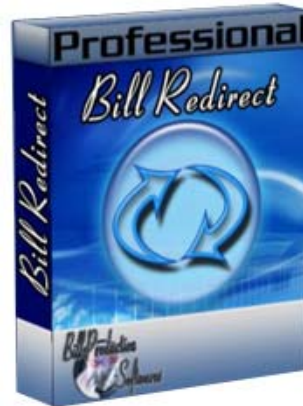
**If a problem persist or to do more  
use our  
Software configuration and integration service  
It's free, fast (*usually the same day*), and efficient !  
Submit your case to [info@billproduction.com](mailto:info@billproduction.com)  
and receive a customized solution !**

Our Internet site: <http://www.billproduction.com/>

Email: [info@BillProduction.com](mailto:info@BillProduction.com)

This documentation demonstrate how you can control any Windows programs with a standard iPod Touch, iPhone or iPad.

### Step #1 (Installation)



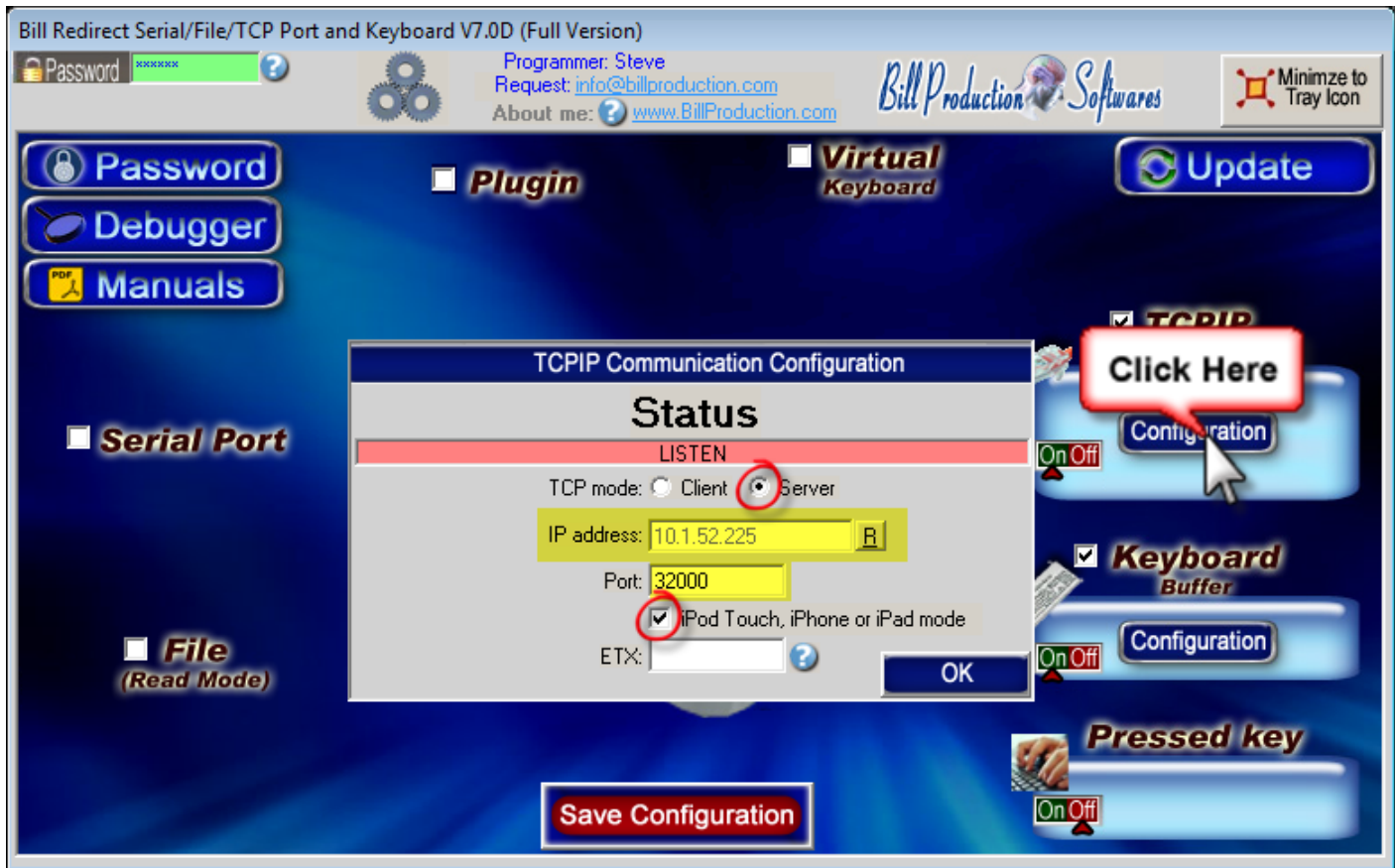
Download and install Bill Redirect software  
[http://www.billproduction.com/Bill\\_COMtoKB.ZIP](http://www.billproduction.com/Bill_COMtoKB.ZIP)

### Step #2 (General configuration)



Disable all except the **TCPIP** and **Keyboard Buffer** section.  
Set to **On** TCPIP switch  
Set to **On** Keyboard Buffer switch  
Set to **Off** Pressed key switch.

### Step #3 (TCPIP Configuration)



Click on button: **TCPIP Configuration**

Select the TCP mode : **Server**



**Take in note the IP address**

**Enter in field Port: 32000**

**Check the option: iPod Touch, iPhone or iPad mode**

**Save Configuration**

Click on button: **Save Configuration**

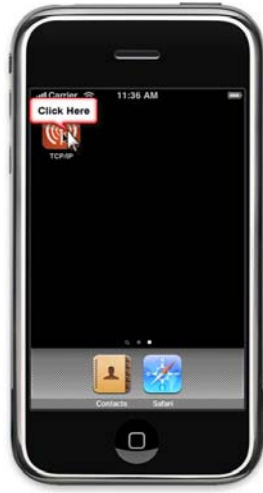
**Step #4** (*iPod Touch, iPhone or iPad install “TCP/IP Remote” application*)

You must install the “TCP/IP Remote” application by Michael Zinman on your iPod Touch, iPhone or iPad.



Link to install this application on your iPod Touch, iPhone or iPad:  
<http://itunes.apple.com/us/app/tcp-ip-remote/id306869077?mt=8>

**Step #5** (*iPod Touch, iPhone or iPad start the application*)



Start the application **“TCP/IP Remote”**

**Step #6** (*iPod Touch, iPhone or iPad TCP/IP configuration*)



Click on TCP WiFi Server configuration icon:



**Step #7** (*iPod Touch, iPhone or iPad Server configuration*)



Click on button: **Add New Connection**

**Step #8** (*iPod Touch, iPhone or iPad Server configuration*)



Enter in field "Name": **demo**



Enter in "Server Address": The address taken in note at **Step #3**

Enter in field "Port": **32000**

Click on button: **Save**

**Step #9** (*iPod Touch, iPhone or iPad establish the connection*)



Set the “demo” connection to: **ON**  
Click on button: **X**

**Step #10** (*iPod Touch, iPhone or iPad Macro configuration*)



Click on Refresh button as long as you do not see the “Connected to 1 of 1 servers” on screen  
After click on button: **Macros**



**Step #11** (*iPod Touch, iPhone or iPad configuration*)



Click on button: **Edit**  
Click on a blue button

## Step #12 (iPod Touch, iPhone or iPad Button Command configuration)



Enter in field “Caption” what you want to see on the button, for example: **7 and Enter**

Enter in field “Command” the command: **7(ENTER)**

*\*Important: Command is case sensitive.*

*\*You can replace the sequence **7(ENTER)** by the action you want*

Example to simulate the hot key Alt Z use this syntax: **(ALT)z**

Example to move the mouse cursor to the left use this syntax:

**(MOUSE\_ACTION[-500, 0,CURRENT,NO\_ACTION])**

Example to simulate Left Arrow use this syntax: **(LEFT)**

To test your button(s) click on: **Done**



## POSSIBLE COMMANDS SECTION

Keyboard buffer output, possible values

Each key is represented by one or more characters. To specify a single keyboard character, use the character itself. To represent the letters A, B, and C, use ABC for string. To specify characters that aren't displayed when you press a key, such as ENTER or TAB, and keys that represent actions rather than characters, use the codes shown below:

*\*Important: All commands are case sensitive.*

*\*In this documentation if you want, you can use the characters ( and ) instead of { and }*

Description	Command
SEND TO WINDOWS DESKTOP	{WinDesk}
SEND TO CURRENT WINDOWS	{WinCur}
START MENU WINDOWS	{StartWin}
BACKSPACE	{BACKSPACE}, {BS}, or {BKSP}
BREAK	{BREAK}
CAPS LOCK	{CAPSLOCK}
DEL or DELETE	{DELETE} or {DEL}
DOWN ARROW	{DOWN}
END	{END}
ENTER	{ENTER} or ~
ESC	{ESC}
HELP	{HELP}
HOME	{HOME}
INS or INSERT	{INSERT} or {INS}
LEFT ARROW	{LEFT}
NUM LOCK	{NUMLOCK}
PAGE DOWN	{PGDN}
PAGE UP	{PGUP}
PRINT SCREEN	{PRTSC}
RIGHT ARROW	{RIGHT}
SCROLL LOCK	{SCROLLLOCK}
TAB	{TAB}
UP ARROW	{UP}
Current prefix	{CURPREFIX}
Current suffix	{CURSUFFIX}
Current System Time	{CURTIME}
Current System Date	{CURDATE:DD-MM-YYYY}
Get clipboard text	{CLIPBOARD}
XX Button text (XX = The virtual button number)	{BUTTON_TXT[XX]}
F1 to F16	{F1} to {F16}
{SHIFT_DOWN}	Key Shift press
{SHIFT_UP}	Key Shift release
{CTRL_DOWN}	Key Ctrl press
{CTRL_UP}	Key Ctrl release
{ALT_DOWN}	Key Alt press
{ALT_UP}	Key Alt release
Data received (example the Barcode)	RX_DATA
Last command sent by the software	LST_TXCMD
In TCP SERVER mode the IP address	{TCP_ADR}
{PAUSE.01SEC}	Do a pause of .01 second
{PAUSE.1SEC}	Do a pause of .1 second
{PAUSE.5SEC}	Do a pause of .5 second
{PAUSE1SEC}	Do a pause of 1 second
{PAUSE2SEC}	Do a pause of 2 seconds

To specify keys combined with any combination of the SHIFT, CTRL, and ALT keys, precede the key code with one or more of the following codes:

{SHIFT}	{CTRL}	{ALT}
---------	--------	-------

Example, to send ALT and A use this syntax: {ALT}A

To see all possible commands please consult the software manual:

[http://www.billproduction.com/Bill\\_Redirect\\_Manual.pdf](http://www.billproduction.com/Bill_Redirect_Manual.pdf)

*\*In this documentation if you want, you can use the characters ( and ) instead of { and }*

*\*Important: All commands are case sensitive.*

## Step #13 (iPod Touch, iPhone or iPad Test ...)



On the computer open the Windows Notepad  
Click on button “**7 and Enter**” on your iPod Touch, iPhone or Ipad

**If everything is configured correctly, you should see a 7 followed by Enter in the computer Notepad**

*For more information about the application “TCP/IP Remote” watch this video:*



<http://www.zinmansoftware.com/quicktime/TCPIP21.mov>



**If a problem persist or to do more  
use our  
Software configuration and integration service  
It's free, fast (usually the same day), and efficient !  
Submit your case to [info@billproduction.com](mailto:info@billproduction.com)  
and receive a customized solution !**

For more documentation visit:



<http://www.billproduction.com/documentation.html>



For more flexibility/options or an installation package build for your company: [info@BillProduction.com](mailto:info@BillProduction.com)

*\*Also available on request, all our advertising (PDF format) are available in source mode (Document Word), send your request by e-mail to: [info@BillProduction.com](mailto:info@BillProduction.com)*