



Bill Redirect Software

How To Schedule the opening and closing relays **with the **National Control Devices** products**

Wireless or RS-232

Single / Dual Relay Controllers

NCD RS-232 / ZigBee Networkable Relay Controllers
(1-Relay Controllers and 2-Relay Controllers)



Hardware Controllers: www.iorelay.com

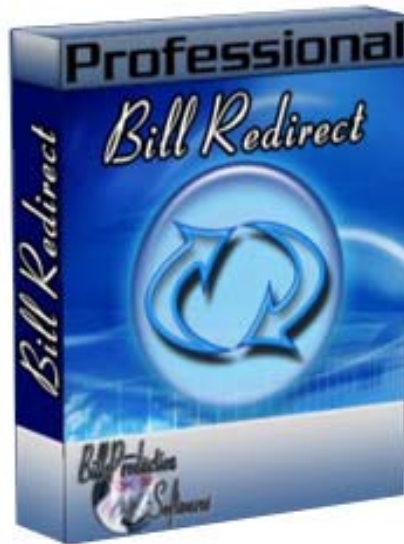
Supported Operating Systems: Windows 98, Me, 2000, 3000, XP, NT4, Vista.

This tutorial shows how you can schedule opening/closing relays
with Bill Redirect software at the time and frequency that you specify.

Use this documentation with the product : Bill Redirect Version 6.0C or more.
(Rev.: 19/04/2009)

Our Internet site: <http://www.billproduction.com/>
Email: info@BillProduction.com

 GENERAL INFORMATION



To configure this software you have to enter in the field password www.billproduction.com, In the configuration options you have the possibility to change this password for what you want. To close this software, type END in the password field.

Software configuration and integration service

It's free, fast (*usually the same day*), and efficient !
Submit your case to info@billproduction.com
and receive a customized solution !



Custom Software Development

With over 15 years of experience in successfully providing Custom Software Development solutions for over 300 customers, we have honed our processes and skills to cater to your specific business needs.

To request a feature, a Customize option or any kind of Software:

Contact by email: info@billproduction.com

Step by Step Configuration

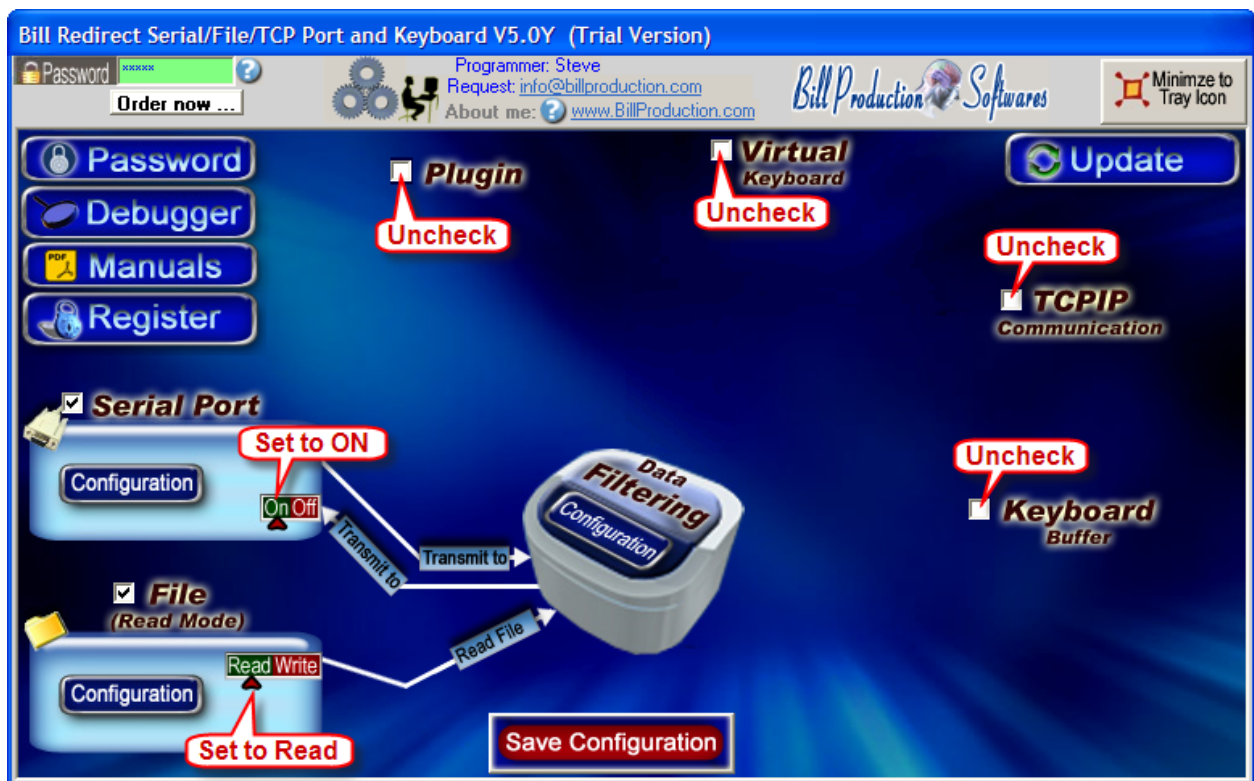
This tutorial shows how you can schedule
“1-Relay Controllers and 2-Relay Controllers”

Hardware Controllers: www.iorelay.com

with Bill Redirect software at the time and frequency that you specify.

Perfect to control door lock with a schedule, Bell systems, light, motor ...

Step #1 (General)



Disable all except the **Serial Port** and **File** sections
Set File to **Read Mode**

Step #2

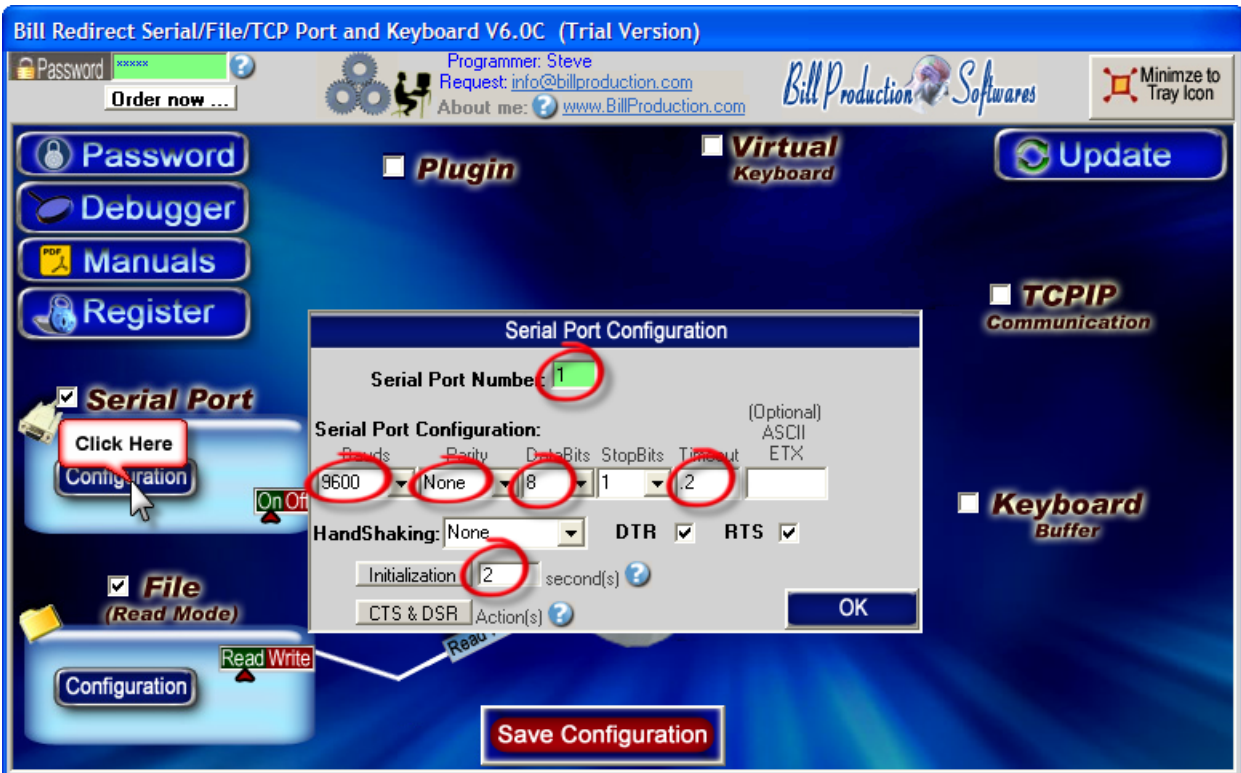
Download this file:

http://www.billproduction.com/R2X-1_CFG.ZIP

and extract the files contained in your directory:

<C:\BillProduction.cfg>

Step #3 (Serial Port Configuration)



Click on button Serial Port: **Configuration**

Set the HandShaking to: **None**

Activate the options: **DTR** and **RTS**

Enter the **Serial Port Number** where your Relay Controller is connected

If the back color field is GREEN, it's because the COM is present and available.

Use this Serial Port Configuration:

Bauds: **9600**

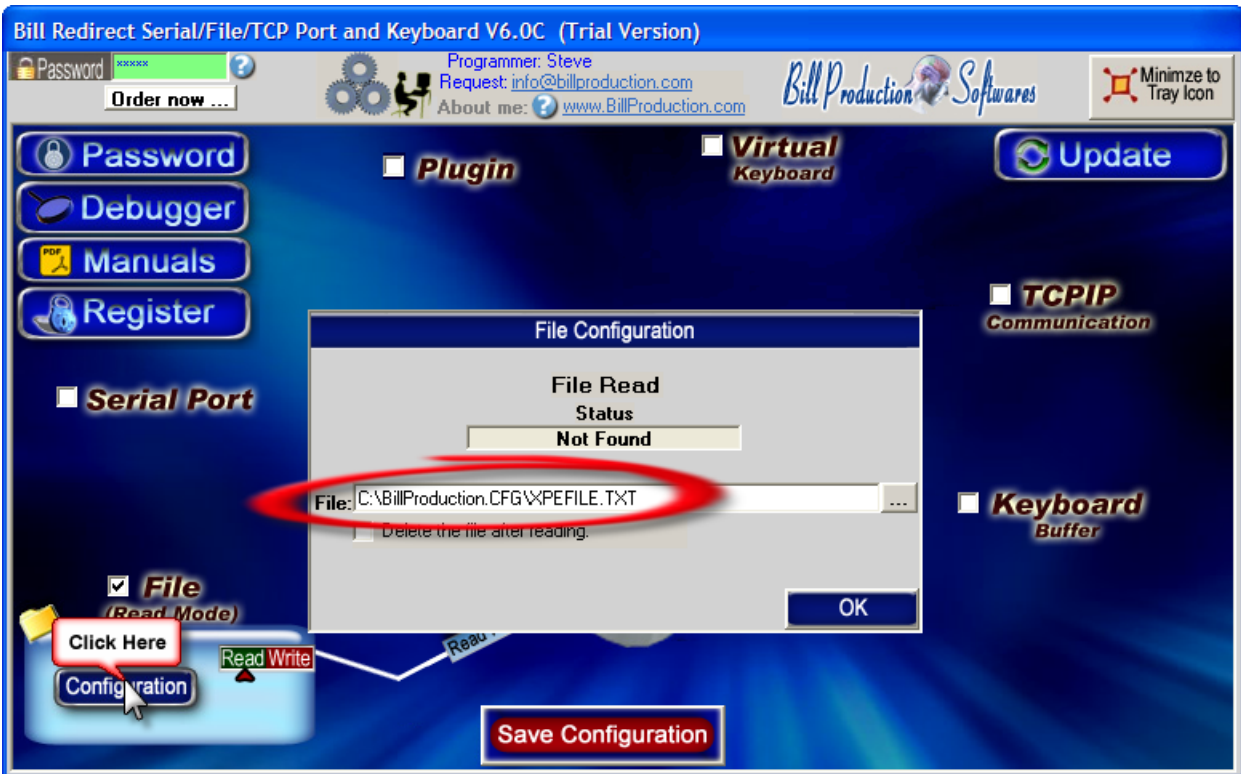
Parity: **None**

DataBits: **8**

Timeout: **.2**

Enter in field "second(s)": **2**

Step #4 (File Configuration)



Click on button File: Configuration

Enter in field "File:" : C:\BillProduction.CFG\XPEFILE.TXT

Step #5 (Add Relays IP Commands)



Click on: **Configuration**

Click on button: **ADD**

In the field "Search" enter: RELAY01ON

In the field "Replace by" enter: {ASCII:248}{ASCII:254}{ASCII:1}

Click on button: **ADD**

In the field "Search" enter: RELAY01OFF

In the field "Replace by" enter: {ASCII:248}{ASCII:254}{ASCII:0}

Click on button: **ADD**

In the field "Search" enter: RELAY02ON

In the field "Replace by" enter: {ASCII:248}{ASCII:254}{ASCII:3}

Click on button: **ADD**

In the field "Search" enter: RELAY02OFF

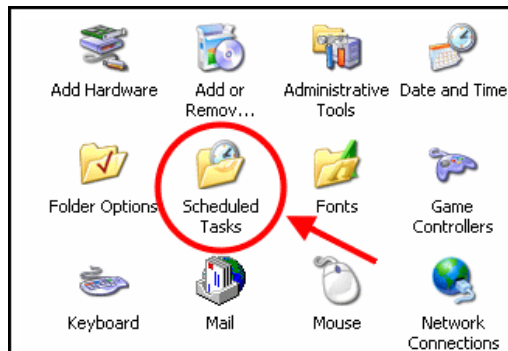
In the field "Replace by" enter: {ASCII:248}{ASCII:254}{ASCII:2}

* To use Relay Controllers 4 / 8 / 16 / 24... or do more, contact info@billproduction.com

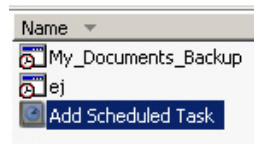
Step #6 (Windows Microsoft Task Scheduler)

Windows XP

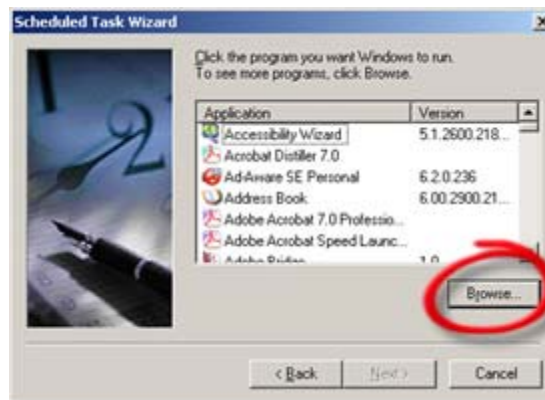
**** If you use Windows Vista, go to Step 8**



Click on: [Control Panel/Scheduled Tasks](#)



Select: [Add Scheduled Task](#)

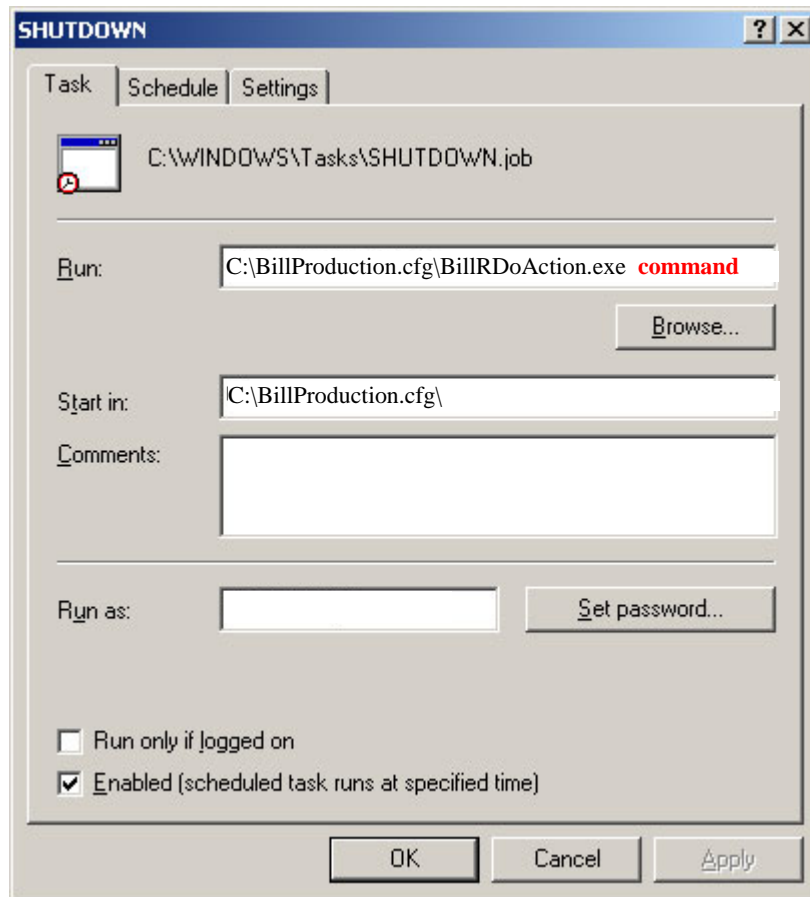


Click browse and locate the file: [C:\BillProduction.cfg\BillRDoAction.exe](#)

- Select how often you would like to perform the task.
- Select the time and the days of the week and click next.
- On the final screen, put a checkmark the box that says *“Open advanced properties for this task when I click Finish”* and then click finish.

Step #7 (Windows Microsoft Task Scheduler)

Windows XP



Now we will see the advanced properties window

Replace the word **command** by your command(s)

Example to OPEN relay #02 replace the **command** by: RELAY02ON

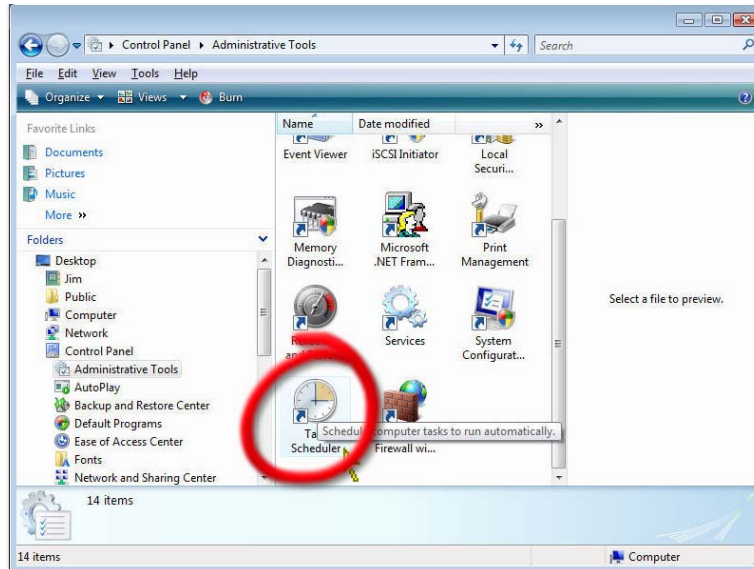
Example to CLOSE relay #02 replace the **command** by: RELAY02OFF

Example to OPEN relay #01 and #02 replace the **command** by: RELAY01ONRELAY02ON

* To see all possible commands, please consult the manual corresponding to your product www.iorelay.com

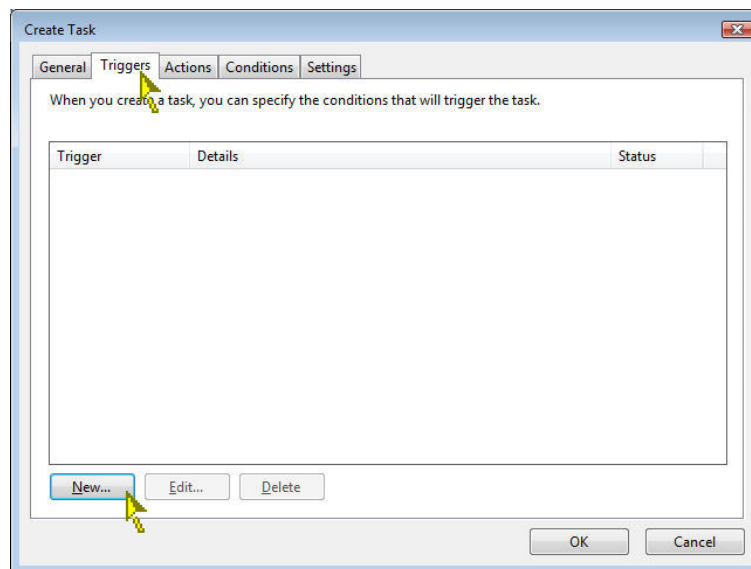
Step #8 (Add Scheduled Task)

Windows Vista



Click on: [Control Panel/Administrative Tools/Task Scheduler](#)

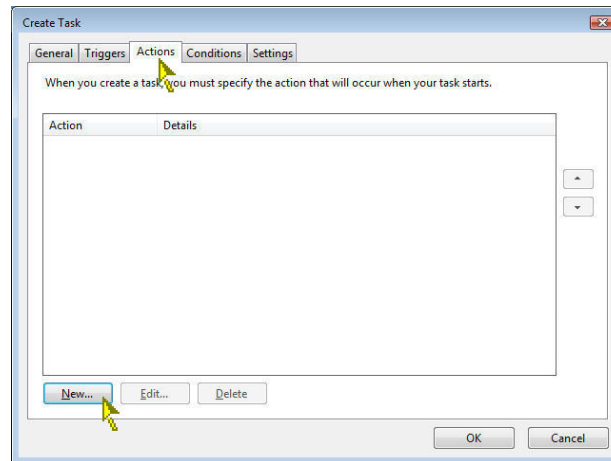
Click on the “Create Task” Action item ... This will open the Create Task Window.



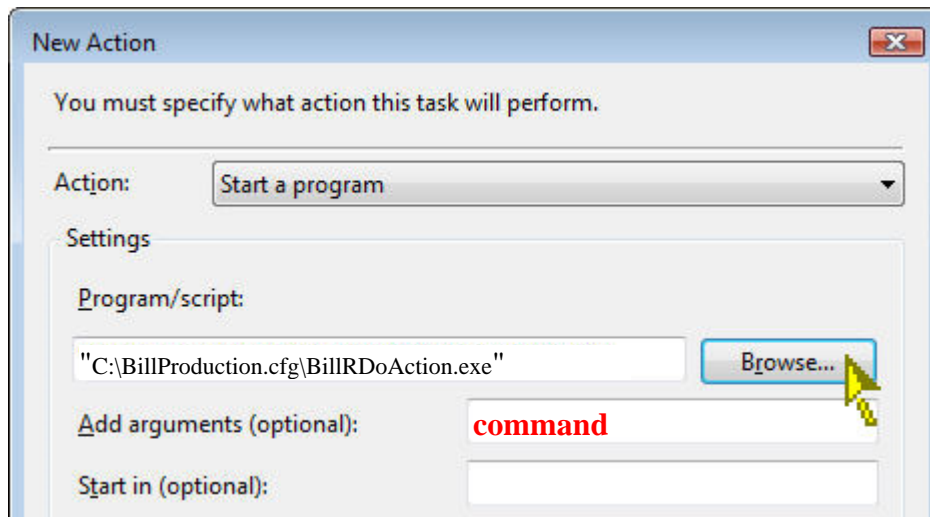
Click on the Triggers tab click on the “New” box.

- Select how often you would like to perform the task.
- Select the time and the days of the week and click next.

Step #9 (Add Scheduled Task) Windows Vista



Click on the Actions tab click on the “New” box.



Click browse and locate the file: <C:\BillProduction.cfg\BillRDoAction.exe> and click on the Open button.

Replace the word **command** by your command(s)

Example to OPEN relay #02 replace the **command** by: [RELAY02ON](#)

Example to CLOSE relay #02 replace the **command** by: [RELAY02OFF](#)

Example to OPEN relay #01 and #02 replace the **command** by: [RELAY01ONRELAY02ON](#)

* To see all possible commands, please consult the manual corresponding to your product www.iorelay.com

Save Configuration

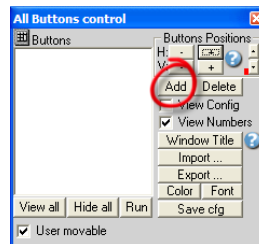
Click on button: **Save Configuration**
TEST

Step #10 (*Optional Virtual Keyboard*)

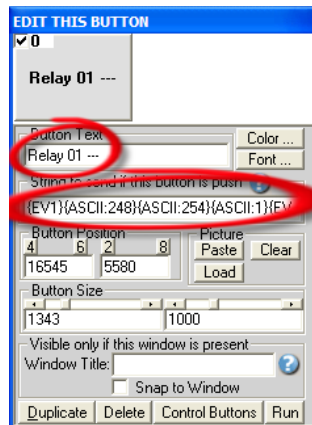
This **optional** step shows how you can add a Virtual Keypad to control the relays and display on each button the Relays Status



Enable the section: **Virtual Keyboard**
Click on button: **Configuration**



Click on button: **Add**

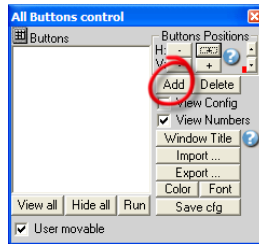


Enter in field “**Button Text**” : **Relay 01 ---**

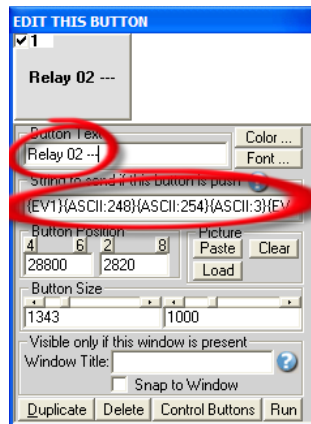
Enter in field “**String to send ... is push**” :

{EV1}{ASCII:248}{ASCII:254}{ASCII:1}{EV1}{EV2}{ASCII:248}{ASCII:254}{ASCII:0}{EV2}

Step #11 (Optional Virtual Keyboard)



Click on button: **Add**



Enter in field “Button Text” : **Relay 02 ---**

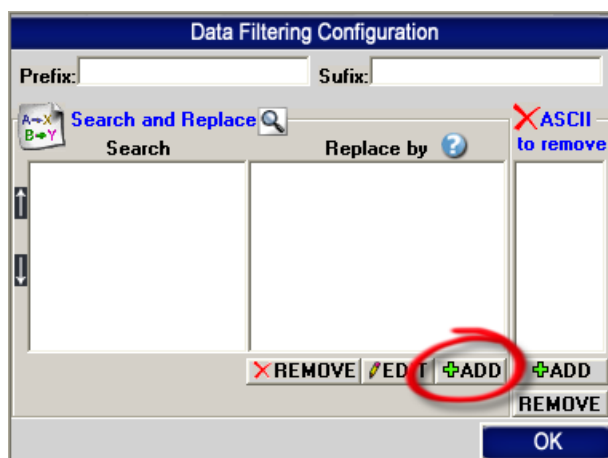
Enter in field “String to send ... is push” :

{EV1}{ASCII:248}{ASCII:254}{ASCII:3}{EV1}{EV2}{ASCII:248}{ASCII:254}{ASCII:2}{EV2}

Step #12 (Optional Virtual Keyboard)



Click on: **Configuration**



Click on button: **ADD**

In the field "Search" enter: {ASCII:0}

In the field "Replace by" enter: {TX_BUTTON_TXT[00,Relay 01 OFF]}{TX_BUTTON_TXT[01,Relay 02 OFF]}

Click on button: **ADD**

In the field "Search" enter: {ASCII:1}

In the field "Replace by" enter: {TX_BUTTON_TXT[00,Relay 01 ON]}{TX_BUTTON_TXT[01,Relay 02 OFF]}

Click on button: **ADD**

In the field "Search" enter: {ASCII:2}

In the field "Replace by" enter: {TX_BUTTON_TXT[00,Relay 01 OFF]}{TX_BUTTON_TXT[01,Relay 02 ON]}

Click on button: **ADD**

In the field "Search" enter: {ASCII:3}

In the field "Replace by" enter: {TX_BUTTON_TXT[00,Relay 01 ON]}{TX_BUTTON_TXT[01,Relay 02 ON]}

Save Configuration

Click on button: **Save Configuration**

Click on button: **Minimize to Tray Icon**

Test

For more documentation visit:

<http://www.billproduction.com/documentation.html>



**If a problem persist use the
Software configuration and integration service
It's free, fast, and efficient !
Submit your case to info@billproduction.com
and receive a customized solution !**



PERSONALIZE

You can personalize my software with your company name, logo, skins, password, directory... With this possibility you can distribute my software with your company information ! The end user, will think that you are the creator of this software !

- To Extract the current configuration setting, just type in the field password: **SAVE_SKIN**
- After this action, a message box appear to indicate where is the configuration.
- Now you can modify this configuration files for what you want (Skin*.*)).
- To re-load your skin modification type in the password field: **LOAD_SKIN**

**At startup my software load automatically your configuration*

To open the mouse position monitor, type **MOUSE in the field password and move the main window in the left top corner.*

How change the default configuration directory:

**By default the configuration of my software is in the directory: C:\BillProduction.CFG*

To change this directory:

- In the same directory that my .exe application or in your C:\ modify the file: **BPCFGDIR.TXT**

** This file contain the default configuration directory.*

** Several BillRedirect softwares in differents computers, can use the same directory over the network. If the configuration changed in a computer, then other computers automatically synchronize in the next 5 seconds.*

All the configuration is by default in C:\BillProduction.cfg. * then to duplicate the configuration from a computer to another, just copy this directory.*

** Don't forget to close Bill Redirect on target computer before copy the configuration.*



For more flexibility/options or an installation package build for your company:

info@BillProduction.com

**Also available on request, all our advertising (PDF format) are available in source mode (Document Word), send your request by e-mail to: info@BillProduction.com*