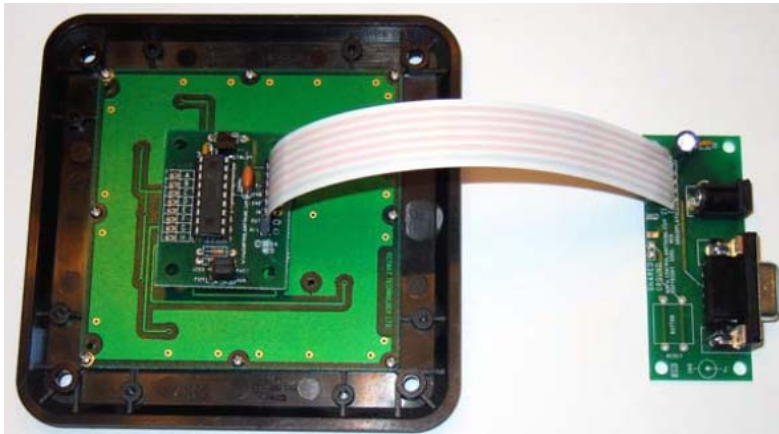




Bill Redirect Software configuration

How Inputs data from “*ABTPRO 16-Key RS-232 Keypad Encoder*” directly into any Windows programs as if it was typed in using the current keyboard.



ABTPRO shown connected to a Storm Keypad (left) and an RSIO (right, included with the QS12-F6 Quick Start Kit).

National Control Devices product [ABTPRO 16-Key RS-232 Keypad Encoder](#)

Hardware product: www.iorelay.com

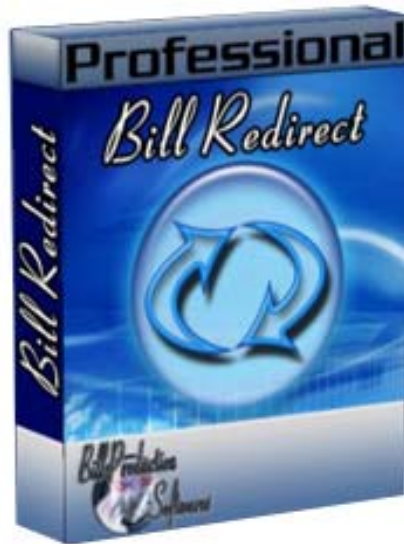
Supported Operating Systems: Windows 98, Me, 2000, 3000, XP, NT4, Vista.

The ABTPRO is compatible with any matrix style keypad with 16 keys or less. Smaller matrix keypads may be used, simply omit connection to rows and columns that do not exist your matrix keypad. The interface of the ABTPRO is programmed for direct connection to the following Storm series keypads, available from Keymat Technology (www.keymat.com): GS0401 Grey 4x1 Keypad, GS0402 Black 4x1 Keypad, GS1201 Grey, 4x3 Keypad, GS1202 Black 4x3 Keypad, GS1601 Grey 4x4 Keypad, GS1602 Black 4x4 Keypad
The ABTPRO is Compatible with ANY Matrix (Column/Row Intersection Method) Keypad up to 16 Keys.

Use this documentation with the product : Bill Redirect Version 6.0C or more.
(Rev.: 19/04/2009)

Our Internet site: <http://www.billproduction.com/>
Email: info@BillProduction.com

 GENERAL INFORMATION



To configure this software you have to enter in the field password www.billproduction.com, In the configuration options you have the possibility to change this password for what you want. To close this software, type END in the password field.

Software configuration and integration service

**It's free, fast (*usually the same day*), and efficient !
Submit your case to info@billproduction.com
and receive a customized solution !**



Custom Software Development

With over 15 years of experience in successfully providing Custom Software Development solutions for over 300 customers, we have honed our processes and skills to cater to your specific business needs.

To request a feature, a Customize option or any kind of Software:

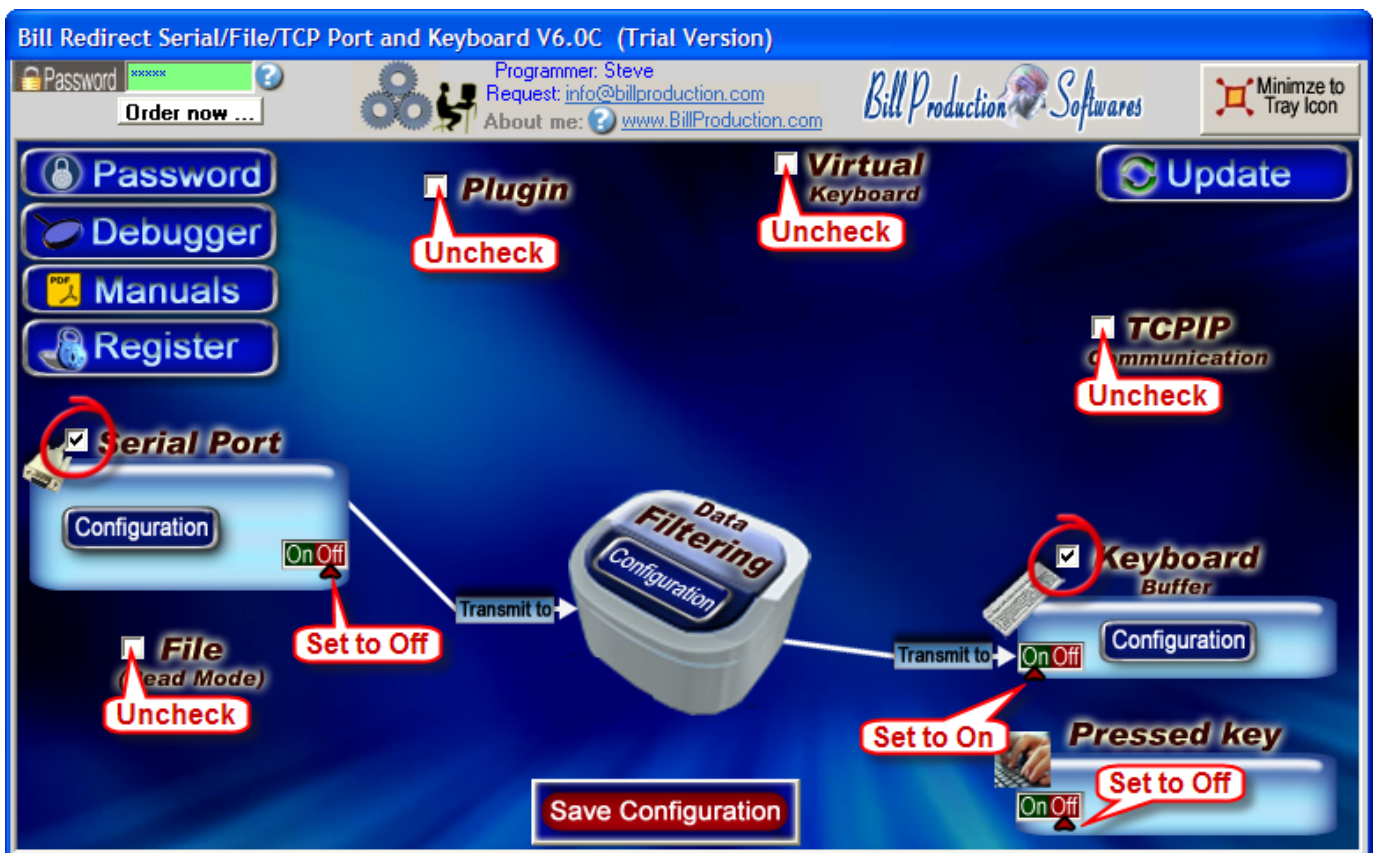
Contact by email: info@billproduction.com

Step by Step Configuration

This tutorial shows how you can with Bill Redirect software inputs data from “*ABTPRO 16-Key RS-232 Keypad Encoder*” directly into any Windows programs as if it was typed in using the current keyboard.

Hardware *ABTPRO* available on: www.iorelay.com

Step #1 (General)



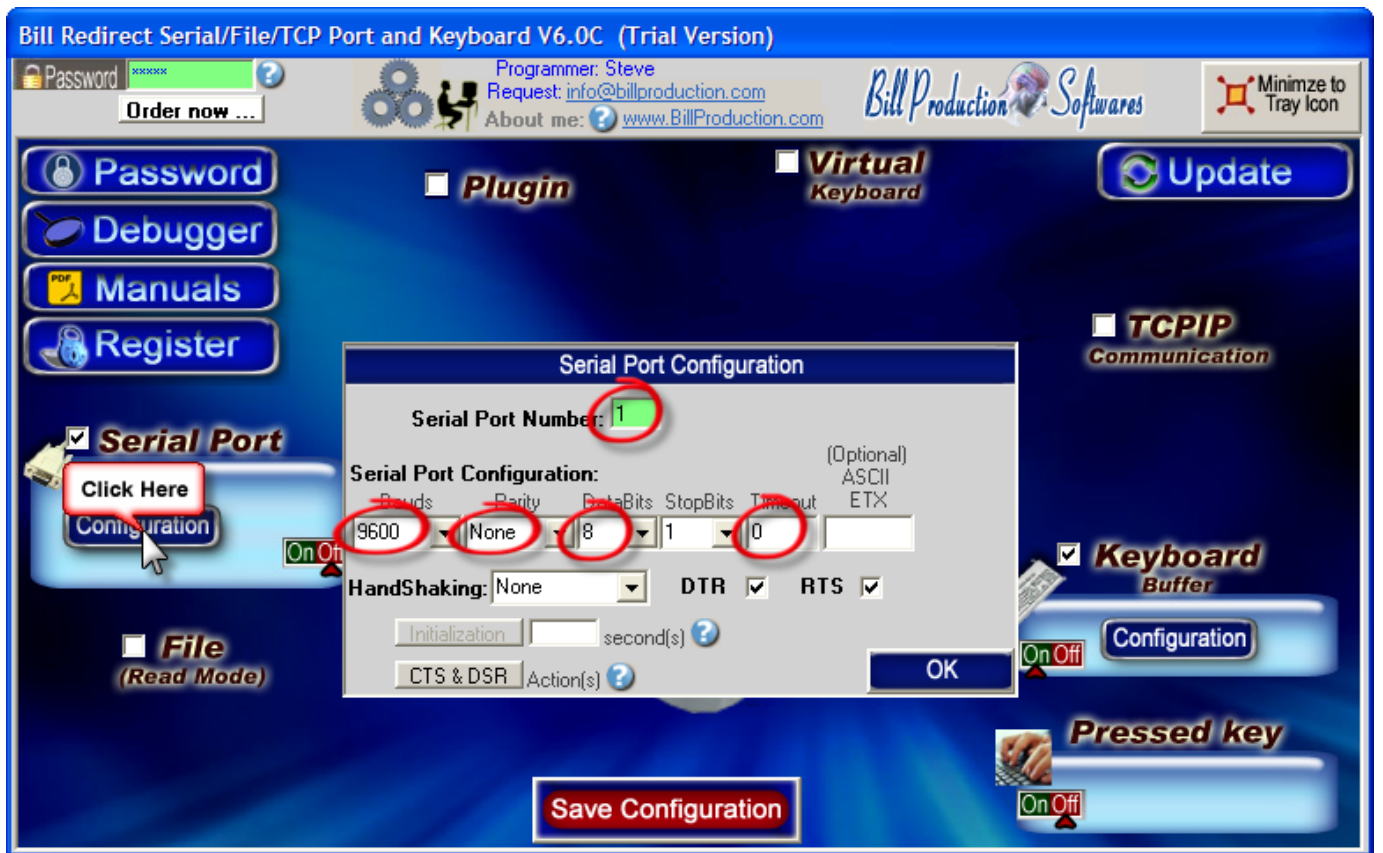
Disable all except the **Serial Port** and **Keyboard Buffer** sections

Set *Serial Port* switch to: **Off**

Set *Keyboard Buffer* switch to: **On**

Set *Pressed Key* switch to: **Off**

Step #2 (Serial Port Configuration)



Click on button Serial Port: **Configuration**

Set the HandShaking to: **None**

Activate the options: **DTR** and **RTS**

Enter the **Serial Port Number** where your keypad is connected

**If the back color field is GREEN, it's because the COM is present and available.*

Use this Serial Port Configuration:

Bauds: **9600**

** On the ABTPRO set the jumper to 9600 bauds mode.*

Parity: **None**

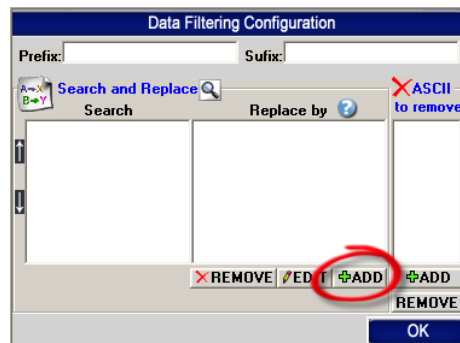
DataBits: **8**

Timeout: **0**

Step #3 (Add keys action)



Click on: **Configuration**



Click on button: **ADD**

In the field "Search" enter: {ASCII:0}

In the field "Replace by" enter: **Key_00**

Click on button: **ADD**

In the field "Search" enter: {ASCII:1}

In the field "Replace by" enter: **Key_01**

Click on button: **ADD**

In the field "Search" enter: {ASCII:2}

In the field "Replace by" enter: **Key_02**

... continue like this for the keys from 03 to 15

* Replace **Key_XX** by the key on the keyboard to simulate

Example to simulate the number 9 use: **9**

Example to simulate Enter use: **{ENTER}**

Example to simulate Left Arrow use: **{LEFT}**

* See example on the next page

To see all keys possibilities: http://www.billproduction.com/Bill_Redirect_Manual.pdf

*Section: *POSSIBLE COMMANDS SECTION (continuation) Keyboard buffer output, possible values)*

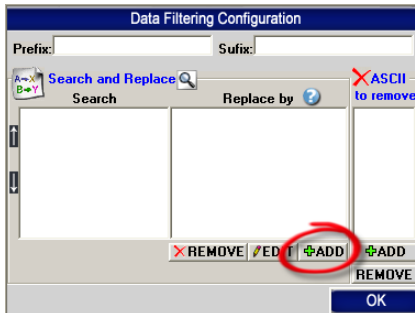
Save Configuration

Click on button: **Save Configuration**
TEST

Example using a Storm keypad



ASCII Keypad correspondence



Click on button	In the field "Search"	In the field "Replace by"
ADD	{ASCII:0}	1
ADD	{ASCII:1}	2
ADD	{ASCII:2}	3
ADD	{ASCII:3}	A
ADD	{ASCII:4}	4
ADD	{ASCII:5}	5
ADD	{ASCII:6}	6
ADD	{ASCII:7}	7
ADD	{ASCII:9}	8
ADD	{ASCII:10}	9
ADD	{ASCII:11}	C
ADD	{ASCII:12}	*
ADD	{ASCII:13}	0
ADD	{ASCII:14}	#
ADD	{ASCII:15}	.

Step #4 (*Optional* receive keys in a specific application)

This **optional** step shows how you can send the keys in a specific application



The option "Target Windows Name"

With this option you can activate automatically a target windows.

Enter the title of the window where you want redirect the keys.

* If you enter nothing, the software redirect the data to the current window.

* You can enter just a part of the title, for example if the title is "**my application software**" you can enter just a part of the title for example: **my application**

For more documentation visit:

<http://www.billproduction.com/documentation.html>



**If a problem persist use the
Software configuration and integration service
It's free, fast, and efficient !
Submit your case to info@billproduction.com
and receive a customized solution !**



PERSONALIZE

You can personalize my software with your company name, logo, skins, password, directory... With this possibility you can distribute my software with your company information ! The end user, will think that you are the creator of this software !

- To Extract the current configuration setting, just type in the field password: **SAVE_SKIN**
- After this action, a message box appear to indicate where is the configuration.
- Now you can modify this configuration files for what you want (Skin*.*)).
- To re-load your skin modification type in the password field: **LOAD_SKIN**

**At startup my software load automatically your configuration*

To open the mouse position monitor, type **MOUSE in the field password and move the main window in the left top corner.*

How change the default configuration directory:

**By default the configuration of my software is in the directory: C:\BillProduction.CFG*

To change this directory:

- In the same directory that my .exe application or in your C:\ modify the file: **BPCFGDIR.TXT**

** This file contain the default configuration directory.*

** Several BillRedirect softwares in differents computers, can use the same directory over the network. If the configuration changed in a computer, then other computers automatically synchronize in the next 5 seconds.*

All the configuration is by default in C:\BillProduction.cfg. * then to duplicate the configuration from a computer to another, just copy this directory.*

** Don't forget to close Bill Redirect on target computer before copy the configuration.*



For more flexibility/options or an installation package build for your company:

info@BillProduction.com

**Also available on request, all our advertising (PDF format) are available in source mode (Document Word), send your request by e-mail to: info@BillProduction.com*