

# Bill Production Softwares

## Bill Redirect Software How redirect the weight of a Serial RS-232 Scale



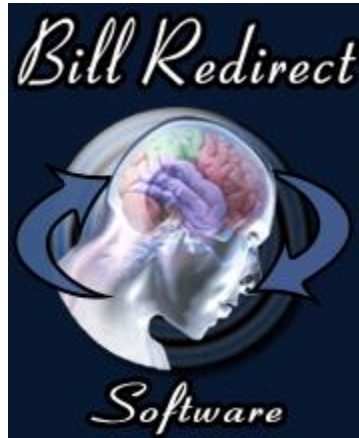
Use this documentation with the product : Bill Redirect Version 6.0C or more.  
(Rev.: 19/11/2016)

**RS232 USB Balance and Scale Software:**

[http://www.billproduction.com/billscalebalance/RS232\\_USB\\_balance\\_scale\\_software.htm](http://www.billproduction.com/billscalebalance/RS232_USB_balance_scale_software.htm)

Email: [info@BillProduction.com](mailto:info@BillProduction.com)

**SOFTWARE DESCRIPTION**



**BillRedirect software support all RS232 and USB scales !**

**This professional multi serial port software enables scales to communicate with your current Windows applications. BillRedirect allows information to be entered directly into your Windows programs as if it was typed by using the keyboard.**

**No programming or additional hardware required !**

**Supported Operating Systems:** Windows 98,Me,2000,3000,XP,NT4,Vista,Win 7 32/64, Win 8 32/64, Win 10 32/64

Simply the best scale software available !

## GENERAL INFORMATION

To configure this software you have to enter in the field password [www.billproduction.com](http://www.billproduction.com), In the configuration options you have the possibility to change this password for what you want. To close the software, type **END** in to the password field.



**If a problem persist or to do more  
use our  
Software configuration and integration service  
It's free, fast (*usually the same day*), and efficient !  
Submit your case to [info@billproduction.com](mailto:info@billproduction.com)  
and receive a customized solution !**

# To redirect a Serial RS232 Scale interface to keyboard buffer



If your Scale is USB and do not come with a serial port driver use this documentation [http://www.billproduction.com/Bill\\_Redirect\\_scale\\_USB.pdf](http://www.billproduction.com/Bill_Redirect_scale_USB.pdf)

## Step #1 (General configuration)



First turn **off** the power of your scale

Download and install Bill Redirect software:

[http://www.billproduction.com/Bill\\_COMtoKB.ZIP](http://www.billproduction.com/Bill_COMtoKB.ZIP)

\*To access the configuration, enter the 'Password' field: [www.billproduction.com](http://www.billproduction.com)

Bill Redirect Serial/File/TCP Port and Keyboard V8.05 (Trial Version)

Website: [www.BillProduction.com](http://www.BillProduction.com)  
Request: [info@billproduction.com](mailto:info@billproduction.com)

Bill Production Softwares

Minimize to Tray Icon

Order now ...

Password: [REDACTED]

Plugin  Uncheck

Virtual Keyboard  Uncheck

Update

Debugger

Manuals

Register

TCPIP Communication  Uncheck

Serial Port

Configuration  On/Off

Set to Off

Transmit to

File (Read Mode)  Uncheck

Keyboard Buffer  On/Off

Set to On

Configuration  On/Off

Pressed key  On/Off

Set to Off

Save Configuration

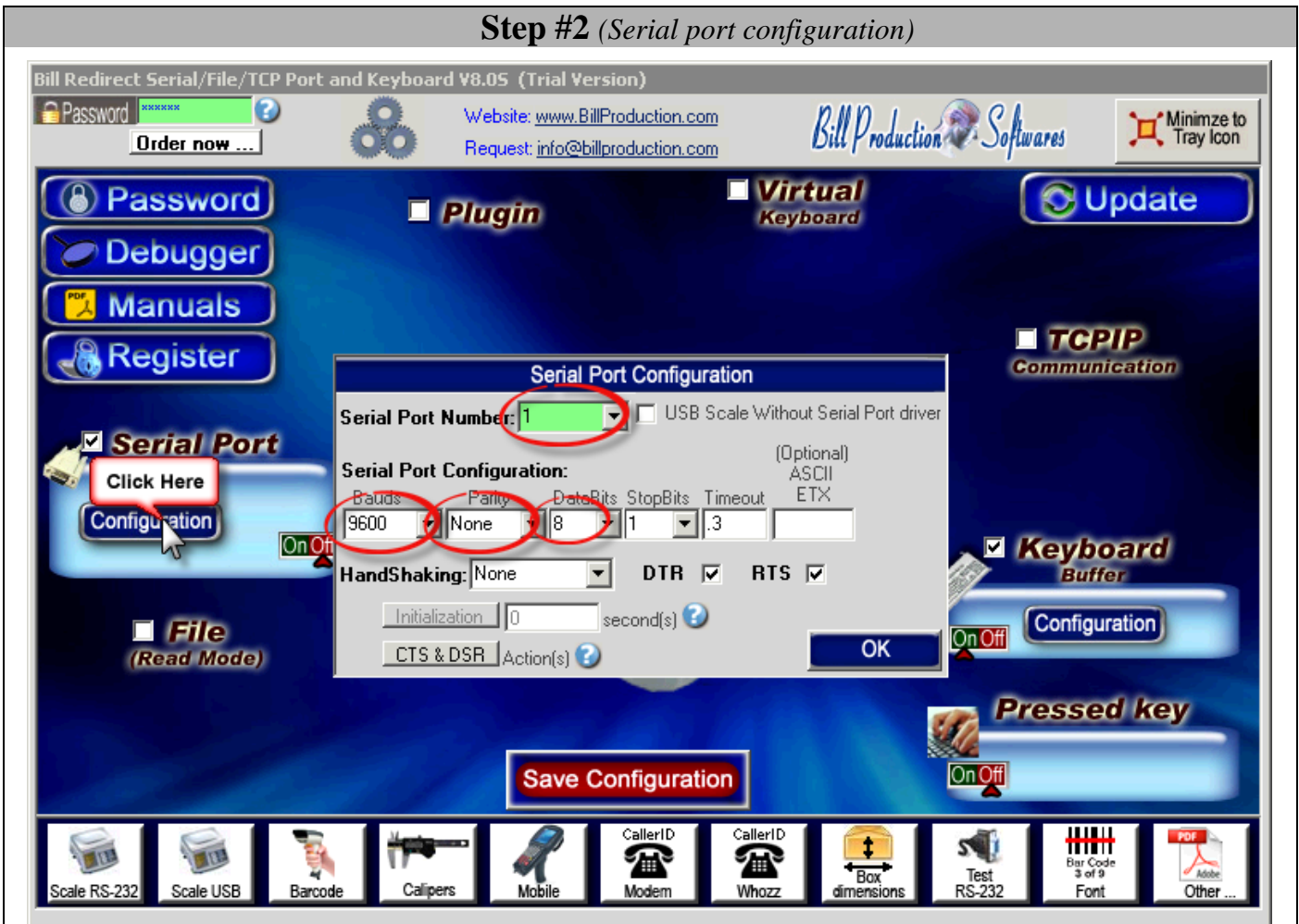
Scale RS-232 Scale USB Barcode Calipers Mobile CallerID Modem CallerID Whozz Box dimensions Test RS-232 Bar Code 3 of 9 Font Other ...

Disable all sections except: **Serial Port** and **Keyboard Buffer**

In section “**Serial Port**” set the switch to: **Off**

In section “**Pressed key**” set the switches to: **Off**

## Step #2 (Serial port configuration)



Click on button: **Configuration**

Enter the **Serial Port Number** where your Scale is connected.

*\* If the back color field is GREEN, it's mean the COM is present and available.*

Enter the configuration of your Scale in fields **Bauds**, **Parity** and **Databits**

*\* Important: Enter the configuration that is configured in your scale*

Enter in field **Timeout**: **.3**

Leave blank the field: **ETX**

Set the **HandShaking** to: **None**

Activate the options: **DTR** and **RTS**

### Step #3 (Keyboard configuration)



Click on button: [Configuration](#)

Activate the option: [API KB user 32](#)

#### The QWERTY option:

Select this option if you use a QWERTY keyboard.

*\*If your keyboard is QWERTY you can see just across the letter Q the letters WERTY*

#### The AZERTY option:

Select this option if you use a AZERTY keyboard.

*\*If your keyboard is AZERTY you can see just across the letter A the letters ZERTY*

#### The Target Windows Name (optional):

With this option you can activate automatically a target windows.

Enter the title of the window where you want redirect the data

\* If you enter nothing, the software redirect the data to the current window.

\* You can enter just a part of the title, for example if the title is “[my application software](#)” you can enter just a part of the title for example: [my application](#)

#### The U. Case option:

The software can switch all lower case characters automatically to upper case.

## Step #4 (Virtual button configuration)

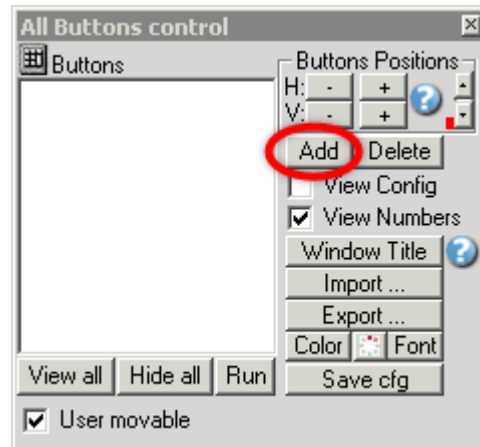
Create a Virtual Button to receive the Weight from your scale



Enable the section: **Virtual Keyboard**

Don't check the option: **in a window**

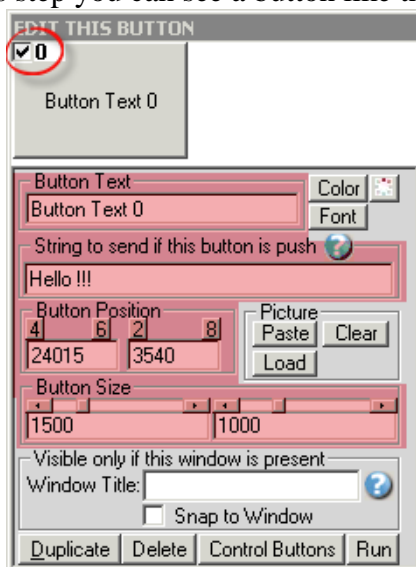
Click on button: **Configuration**



To add a New button, click on button: **Add**

## Step #5 (Scale command configuration)

At this step you can see a button like this one:



\*To see the configuration of the button activate the upper left check box

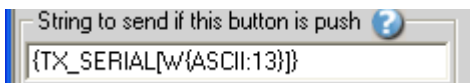
**String to send if this button is push:** This field contains the serial command which request the weight from your scale.

Command examples:

Scale Cardinal: `{TX_SERIAL[{{ASCII:5}}]}`  
Scale Fairbanks h90-5002a: `{TX_SERIAL[{{ASCII:2}}WK{{ASCII:13}}{{ASCII:3}}]}`  
Scale Fairbanks 70-2453-4: `{TX_SERIAL[{{ASCII:13}}]}`  
Scale FB2200: `{TX_SERIAL[{{ASCII:13}}]}`  
Scale GSE: `{TX_SERIAL[W{{ASCII:13}}]}`  
Scale GSE: `{TX_SERIAL[P{{ASCII:13}}]}`  
Scale EXA ECO: `{TX_SERIAL[{{ASCII:2}}$24{{ASCII:13}}{{ASCII:10}}]}`  
**Scale Avery:** `{TX_SERIAL[W{{ASCII:13}}]}`  
Scale with NCI standard protocol: `{TX_SERIAL[W{{ASCII:13}}]}`  
Scale BILANCIAl: `{TX_SERIAL[XN{{ASCII:13}}]}`  
Scale Scientech: `{TX_SERIAL[E{{ASCII:13}}]}`  
Scale METTLER TOLEDO: `{TX_SERIAL[W{{ASCII:13}}{{ASCII:10}}]}`  
Scale METTLER TOLEDO protocol MT-SICS command: `{TX_SERIAL[S{{ASCII:13}}{{ASCII:10}}]}`  
Scale METTLER TOLEDO BC: `{TX_SERIAL[P{{ASCII:13}}]}`  
Scale METTLER TOLEDO Viva (Set your scale Protocol to: NCI Weightronix): `{TX_SERIAL[W{{ASCII:13}}]}`  
Scale METTLER TOLEDO JP/JS (Jewelry Balances gold / carat ): `{TX_SERIAL[W{{ASCII:13}}]}`  
Scale METTLER TOLEDO Wildcat: `{TX_SERIAL[P]}`  
Scale METTLER TOLEDO AE160 (2400,Even,7,1): `{TX_SERIAL[S{{ASCII:13}}{{ASCII:10}}]}`

*\*Scales commands are continuous on the next page...*

**Example if you use an Scale Avery :**



**Button Text:** Use this field to set what you want to see on the button.

**Button Position:** Use this section to change button position.

*\* Tips: Activate the NumLock Click the button and use the number 4,6,2 and 8 to change the position.*

**Button Size :** Use this section to change the button size.



## Scales commands examples (continuation)

Use with the previous page

### Scales command (continuation):

Scale OHAUS: {TX\_SERIAL[P{ASCII:13}{ASCII:10}]}

Scale OHAUS Aviator (scale must be in NCI Protocol): {TX\_SERIAL[W{ASCII:13}]}

Scale Elane: {TX\_SERIAL[{{ASCII:1}P{ASCII:13}{ASCII:10}]}

Scale Denver Instrument: {TX\_SERIAL[{{ASCII:27}x2\_{ASCII:13}{ASCII:10}]}

Scale Denver Instrument / Fisher Scientific A-Series: {TX\_SERIAL[?1{ASCII:13}]}

Scale Acculab / Sartorius / Gemplus / Combics: {TX\_SERIAL[{{ASCII:27}P{ASCII:13}{ASCII:10}]}

Scale Digital Indicator Transcell, Model TI-1500, TI-500E PLUS, TI-500 PLUS: {TX\_SERIAL[P]}

Scale and Balance Kern & Sohn GmbH: {TX\_SERIAL[w]}

Scale Kern & Sohn PBS/PBJ (Set the Limiter option to **CR(ODH)** in your scale): {TX\_SERIAL[PRINT{ASCII:13}]}

Scale SOEHNLE B3C Sérénité (Protocol F501): {TX\_SERIAL[{{ASCII:2}{ASCII:5}{ASCII:3}]}

Scale SOEHNLE B3C Sérénité (Protocol SAIE): {TX\_SERIAL[{{ASCII:22}]}

Scale SOEHNLE B3C Sérénité (Protocol TISA): {TX\_SERIAL[98PPPPP{ASCII:13}{ASCII:10}]}

Scale SOEHNLE B3C Sérénité (Protocol Multipoint 2000): {TX\_SERIAL[{{ASCII:2}xx{ASCII:5}{ASCII:3}]}

Scale A&D: {TX\_SERIAL[Q{ASCII:13}{ASCII:10}]}

Scale Arlyn: {TX\_SERIAL[\*P]}

Scale PSC Magellan Scale/Scanner single cable: {TX\_SERIAL[S11{ASCII:13}]}

Scale PSC Magellan Scale/Scanner dual cable: {TX\_SERIAL[W]}

Scale Motex : Contact us, this scale requires a special configuration [info@billproduction.com](mailto:info@billproduction.com)

Scale PENKO (indicator must be in PC Protocol): {TX\_SERIAL[GG{ASCII:13}]}

Scale Setra: {TX\_SERIAL[#]}

Scale Weigh-Tronix: {TX\_SERIAL[WD{ASCII:13}]}

Scale CAS PD-II (You must setup to: ECR-TYPE 5 and RS-232 to 9600,Even,7,1): {TX\_SERIAL[W{ASCII:13}]}

Medical Scale Health o meter (healtometer bathroom scales) Configuration:  
\*Model: (1100KL,1600KL,2000KL,2101KL,2400KL,2450KL,2500KL,2600KL,2610KL,2650KL,2700KL,498KL,499KL,500KL,597KL,599KL,752KL,753KL,2595KL,2842KL,349KLX,522KL,524KL,553KL,844KL)

- The Serial port configuration is 9600,None,8,1 or 2400,None,8,1
- No Virtual Button and or command needed, this scale will automatically send the weight when it is stable.
- USB COM3 Driver: [http://www.billproduction.com/Drivers/Scale\\_healtOMeter/HealthOMeterUSB\\_DRIVER\\_ver2.msi](http://www.billproduction.com/Drivers/Scale_healtOMeter/HealthOMeterUSB_DRIVER_ver2.msi)

Scale Adam Equipment CPWplus35 and all « CPW plus » scale: {TX\_SERIAL[G{ASCII:13}{ASCII:10}]}

Scale Adam Equipment HIGHLAND SERIES: {TX\_SERIAL[P{ASCII:13}{ASCII:10}]}

Scale ULTRASHIP U2 Configuration:

- The Serial port configuration is: 9600,None,8,1
- The scale must be in LB or KG mode (press M1 on the scale to change de mode).
- No Virtual Button and or command needed, this scale will send the weight when you press the button SEND on the scale.
- USB COM3 Driver: [http://www.billproduction.com/USB\\_Serial\\_Driver\\_PL2303\\_Prolific\\_v1417.zip](http://www.billproduction.com/USB_Serial_Driver_PL2303_Prolific_v1417.zip)
- Click on “Data Filtering Configuration” and in section “Search and Replace” add this rule:
  - In search window enter: {SERIAL\_RX}
  - In replace window enter: {CNV\_ULTSHIPU2[RX\_DATA]}{ENTER}
  - On main screen click on [Save Configuration](#) and test !

Scale Measuretek (PS-101 PS-102 PS-103 PS-104 PS-105) & digital indicator EHI-B: {TX\_SERIAL[W{ASCII:13}]}

Scale Western M2000 (Scale must be setup in DF2000 MODE): {TX\_SERIAL[?]}

*Scales commands are continuous on the next page...*

## Scales commands examples (continuation) Use with the previous page

### Scales command (continuation):

Postage Scale Pitney Bowes JN64 / JN67 & JN75 ... Configuration: {TX\_SERIAL[H]}

- The Serial default serial port configuration is: 9600,Even,7,1
- Click on "Data Filtering Configuration" and in section "Search and Replace" add this rule:
  - In search window enter: {SERIAL\_RX}
  - In replace window enter: {CNV\_PITNBOW[RX\_DATA]}{ENTER}
  - On main screen click on [Save Configuration](#) and test !

Scale PENNSYLVANIA 7000 series: {TX\_SERIAL[SGW{ASCII:13}]}

Scale Rice 920: {TX\_SERIAL[XGP#1{ASCII:13}]}

Scale Rice Lake IQ plus Digital Weight Indicator (EDP mode): {TX\_SERIAL[GFMT{ASCII:13}]}

Scale Rice Lake IQ plus Digital Weight Indicator (Normal mode): {TX\_SERIAL[XG2{ASCII:13}]}

Scale MyWeight HD series ( HD-150 and HD-300 ) must be in SCI.0 mode: {TX\_SERIAL[{ASCII:13}]}

Scale Ian Fellows CSW-20 series: 3000 5000 6000 must be in "Sing = 1 Data on request" mode: {TX\_SERIAL[WT{ASCII:13}]}

Scale TOR REY EQB 100/200: {TX\_SERIAL[P]}

Scale Salter Brecknell Postal / Shipping USB/RS232: [Contact us, this scale requires a special config: info@billproduction.com](mailto:info@billproduction.com)

Scale Salter Brecknell LPS150/LPS400: {TX\_SERIAL[W{ASCII:13}]}

American Weigh Scale PN Series: {TX\_SERIAL[{ASCII:1}s]}

Scale/Scanner NCR: {TX\_SERIAL[{ASCII:2}11{ASCII:13}{ASCII:13}]}

\*\*\*Your NCR must be configured: [BCC Options = Disable / Interface Control = None / Protocol: RS-232](#)

\*\*\*The serial port default configuration of NCR is: 9600,Odd,7,1

Scale GRAM PRECISION (In the scale set the Protocol to: 2): {TX\_SERIAL[\$]}

Scale MyWeigh PD 750 EXTREME USB Configuration:

- Install the USB Virtual Serial COM3 port Driver and test software: [http://www.billproduction.com/pd750\\_usb\\_driver.zip](http://www.billproduction.com/pd750_usb_driver.zip)
- The Serial port configuration is: 9600,None,8,1
- The Serial port configuration ETX is: 13
- The Serial port configuration TIMEOUT is: 0
- Continue at **Step #11** ... Important ... at this step use {CNV\_PD750[RX\_DATA]} instead of RX\_DATA

Scale Weighing indicator White Bird i10 i30 i30S also exists under the name:

- B3C PESAGE SÉRÉNITÉ S300 S601 S811 / SENSORIKA 43050 / Weighing Indicator PT252 PT253 / BAYKON BX21

[Contact us, these scales requires a special configuration: info@billproduction.com](mailto:info@billproduction.com)

Scale Doran PC500 and others Doran scale: {TX\_SERIAL[W]}

**If the command for your scale is not listed please contact us:  
[info@BillProduction.com](mailto:info@BillProduction.com)**

***Important: In the Email, specify your scale: Brand, Model number and Interface type***

## Step #6 (*Optional* virtual button configuration)

Example:



### **Window Title** (*optional*):

Option "Window Title" Description: With this option each button of your Virtual Keyboard can appear and disappear when a specific window title is activate.

\*Example: If the window title is "Application weight expert Version 1.2b" and in the field "Window Title" you enter "Weight EXPERT" then each time that this window take the focus this button is visible.

\* To enter more of one window title, separate the title name by a comas:

Example: Weight EXPERT, NOTEPAD, PAGE COUNT

\* If this the field "**Window Title**" is blank, then the button is always visible.

**Color** (*optional*): Use this option to change the button back color.

**Font** (*optional*): Use this option to change the button text font.

**Picture** (*optional*): Use this section to:

[Paste](#) the picture from the ClipBoard to the button.

[Clear](#) the picture button.

[Load](#) the picture button.

**Step #7** (*Optional* hotkey to request the weight from your scale)

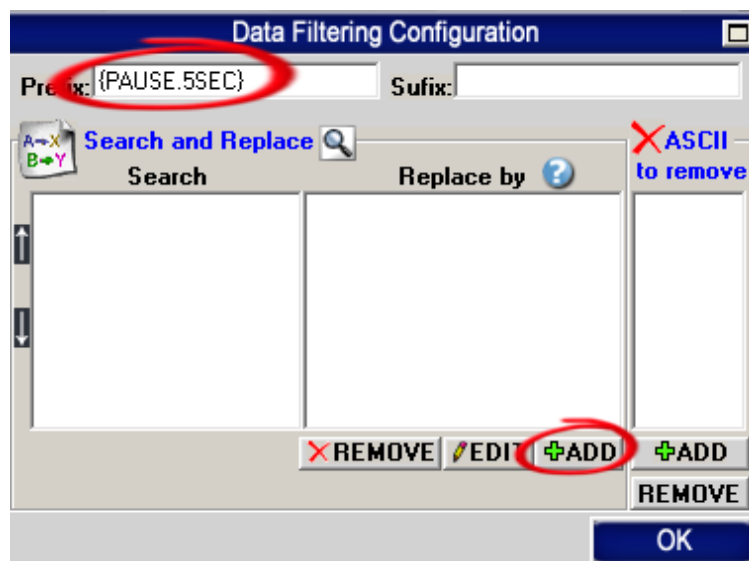
This **optional** step will allow you to request the weight from your scale via a hotkey for example **F11**



Section “Pressed key” set the switch to position: **On**



Click on: **Data Filtering Configuration**



Enter in field “Prefix”: **{PAUSE.5SEC}**

Click on: **ADD**

Enter in field “Search”: **{F11}**

*\* You can replace the hotkey {F11} by what you want example {ALT}{F10}*

*\* To see all hotkey available use this manual: [http://www.billproduction.com/Bill\\_Redirect\\_Manual.pdf](http://www.billproduction.com/Bill_Redirect_Manual.pdf)*

Enter in field “Replace by”: **{TX\_SERIAL[W{ASCII:13}]}**

**\* IMPORTANT:** Replace **{TX\_SERIAL[W{ASCII:13}]}** by your scale command found in Step #5

## Step #8 (Test)



### TEST YOUR SCALE



Click on button: **Run**  
Open the Windows **NotePad**



Turn on the power of your scale  
Click on your: **Virtual Button**

Examples:

47.0 kg Gross

44.2 KG G

56.05 kg GR

44.02 kg

If nothing appear, try to click on button **PRINT** directly on your scale interface

**If the problem persist use our...  
Software configuration and integration service**

**It's free, fast, and efficient !**

Submit your case to [info@billproduction.com](mailto:info@billproduction.com)  
and receive a customized answer !

**\*Important: In the Email, specify your scale: Brand, Model number and Interface type.**

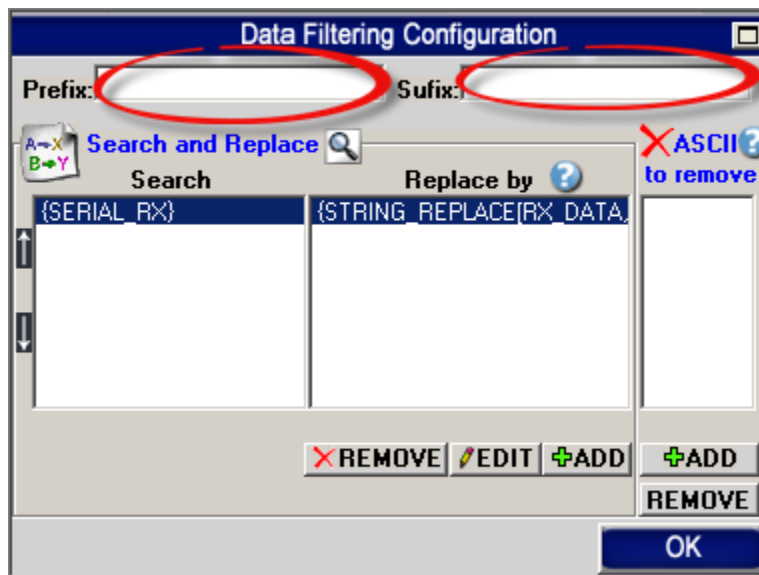
## Step #9 (Data filtering configuration)



### DATA FILTERING CONFIGURATION



Click on: **Configuration**



#### **The Prefix/Sufix (optional):**

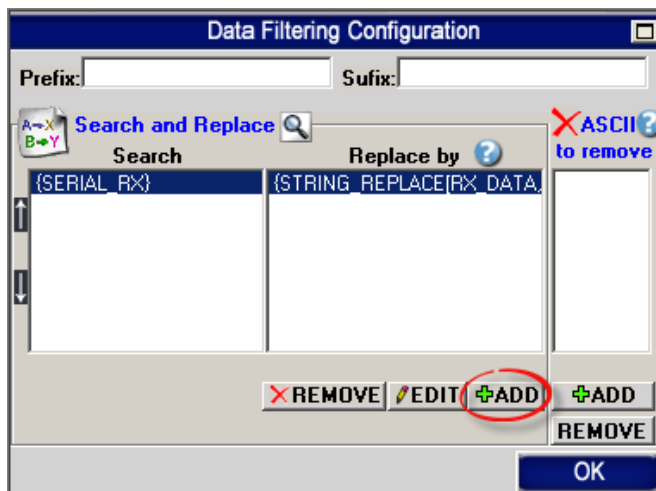
When the software receive data from the scale, it add the PREFIX at the beginning of data and the Sufix at the end.

[\[Prefix\]\[data from a peripheral\]\[Sufix\]](#)

The Prefix and the Sufix can contain any characters and or commands that you want.

*\*see possible commands section in the bill redirect manual*

## Step #10 (Data filtering configuration)



Click on button **ADD** to add a rule

Example 1: To receive only the numerical weight value with an Enter

Search	Replace by
{SERIAL_RX}	{STRING_REPLACE[RX_DATA,NOT:0123456789.,,]}{ENTER}

Example 2: On all data received: From the position 2 extract 5 characters with an Enter

Search	Replace by
{SERIAL_RX}	{STRING_MID[RX_DATA,2,5]}{ENTER}

Example 3: To remove text: GR

Search	Replace by
{SERIAL_RX}GR	<i>leave it blank, just click the OK button</i>

Example 4: To remove carriage return line feed

Search	Replace by
{SERIAL_RX}{ASCII:13}	<i>leave it blank, just click the OK button</i>
{SERIAL_RX}{ASCII:10}	<i>leave it blank, just click the OK button</i>

Example 5: To receive only the value with an Enter

Search	Replace by
{SERIAL_RX}	{MULTIPLY[RX_DATA,1,#.00]}{ENTER}

Example 6: On all data received: From the right extract last 7 characters

Search	Replace by
{SERIAL_RX}	{STRING_RIGHT[RX_DATA,7]}

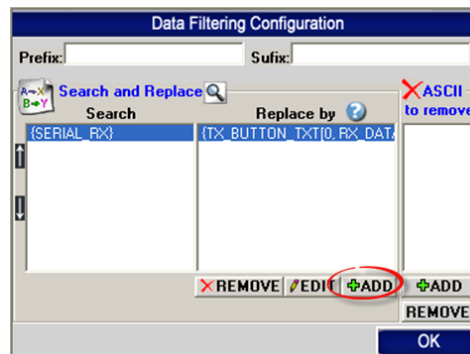
## Step #11 (*CONTINUOUS* mode configuration)

Use this Step **ONLY** if you you're SCALE is configured in **CONTINUOUS** mode, this means that your scale sends the weight continuously at regular intervals.

In this mode you can see the weight in real-time directly on the virtual button.



Set the “Keyboard Buffer” switch in position: **OFF**



Click on button: **ADD**

In the field “Search” enter: **{SERIAL\_RX}**

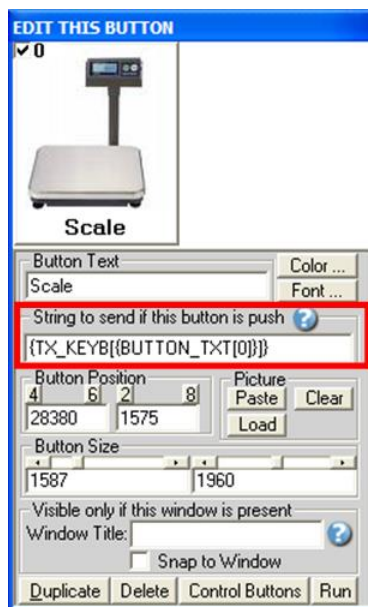
In the field “Replace by” enter: **{TX\_BUTTON\_TXT[0],RX\_DATA}**

**OR**

To receive the weight in the Clipboard use only this rule:

In the field “Search” enter: **{SERIAL\_RX}**

In the field “Replace by” enter: **{COPY\_CLIP[RX\_DATA]}**



Section “Virtual Keyboard” Configuration “Button Configuration” edit this option:  
String to send if this button is push: **{TX\_KEYB[0]}{ENTER}**



## Step #12 (*CONTINUOUS* mode configuration)

Use this Step **ONLY** if you you're SCALE is configured in **CONTINUOUS** mode, this means that your scale sends the weight continuously at regular intervals.

In this mode you can see the weight in real-time directly on the virtual button.

Bauds	Parity	DataBits	StopBits	Timeout	(Optional) ASCII ETX
9600	None	8	1	0	13

HandShaking: None    DTR     RTS

Initialization: 0 second(s) ?

CTS & DSR Action(s) ?    OK

In the field “Timeout” enter: **0**

**ASCII ETX:** Is essential in Continuous or Stable mode, because each string ends always with the same character.

\*ASCII characters from 0 to 255 but usually the value used is **13** for [CR] and **10** for [LF].

\*For example: If your string ends with a ENTER or [CR]:

Bauds	Parity	DataBits	StopBits	Timeout	ETX
9600	None	8	1	0	13

\*To receive the data only if they are different, set timeout option to **999** example:

Bauds	Parity	DataBits	StopBits	Timeout	ETX
9600	None	8	1	999	13

## Step #13 (*Optional: Button in MS Access and weight to field*)



Use this Step to receive the weight in your MS Access form.

With this solution the button to request the weight is directly in your MS Access form and the weight is sent directly in the good field of your form !

### **Bill Redirect software configuration:**

- Enable the section: [File](#)
- In **File** section, set the switch to: [Read](#)
- In **Serial Port** section, set the switch to: [Off](#)
- In **Keyboard Buffer** section, set the switch to: [On](#)
- In **Pressed Key** section, set the switch to: [Off](#)
- In **File Configuration**, enter in field **File**: [C:\BillProduction.cfg\request.txt](#)
- In **File Configuration**, check the option: [Delete the file after reading](#)
- On **main screen**, click on button: [Save Configuration](#)

### **MS Access Form configuration:**

- In your MS ACCESS to receive the weight in your form... add this code on a button in your form:

```
On Error Resume Next
Text1.SetFocus
Open "C:\BillProduction.cfg\request.txt" For Append As #1
Print #1, "{TX_SERIAL[P{ASCII:13}]}"
Close #1
```

- ❖ Replace **Text1** by your Text Box field name where you want receive the weight
- ❖ Replace the command **{TX\_SERIAL[P{ASCII:13}]}** by your scale command chose at step #5

**For more documentation visit:**



**<http://www.billproduction.com/documentation.html>**

The image shows a 3D rendering of puzzle pieces. One piece is missing, and a blue piece with a white '@' symbol is placed in its place. The text to the right of the puzzle pieces is as follows:

**If a problem persist or to do more  
use our  
Software configuration and integration service  
It's free, fast (*usually the same day*), and efficient !  
Submit your case to [info@billproduction.com](mailto:info@billproduction.com)  
and receive a customized solution !**



For more flexibility/options or an installation package build for your company:  
[info@BillProduction.com](mailto:info@BillProduction.com)