



**Bill Redirect Software
and**

National Control Devices

Products: R4x and R8x Pro

**RS-232 E3C Networkable Relay Controllers
(4-Relay Controllers and 8-Relay Controllers)**

** To use Relay Controllers 16 / 24... or do more, contact info@billproduction.com*

Hardware Controllers: www.iorelay.com

Supported Operating Systems: Windows 98, Me, 2000, 3000, XP, NT4, Vista.

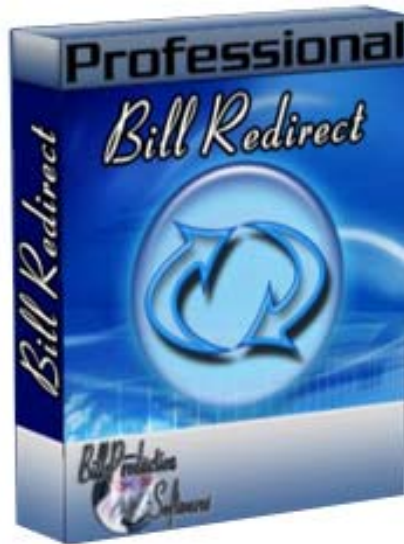
**This tutorial shows how you can opening/closing relays
with Bill Redirect software via a onscreen Virtual Keyboard buttons.**

**Use this documentation with the product : Bill Redirect Version 6.0C or more.
(Rev.: 23/04/2009)**

Our Internet site: <http://www.billproduction.com/>

Email: info@BillProduction.com

 GENERAL INFORMATION



To configure this software you have to enter in the field password www.billproduction.com, In the configuration options you have the possibility to change this password for what you want. To close this software, type END in the password field.

Software configuration and integration service

**It's free, fast (*usually the same day*), and efficient !
Submit your case to info@billproduction.com
and receive a customized solution !**



Custom Software Development

With over 15 years of experience in successfully providing Custom Software Development solutions for over 300 customers, we have honed our processes and skills to cater to your specific business needs.

To request a feature, a Customize option or any kind of Software:

Contact by email: info@billproduction.com

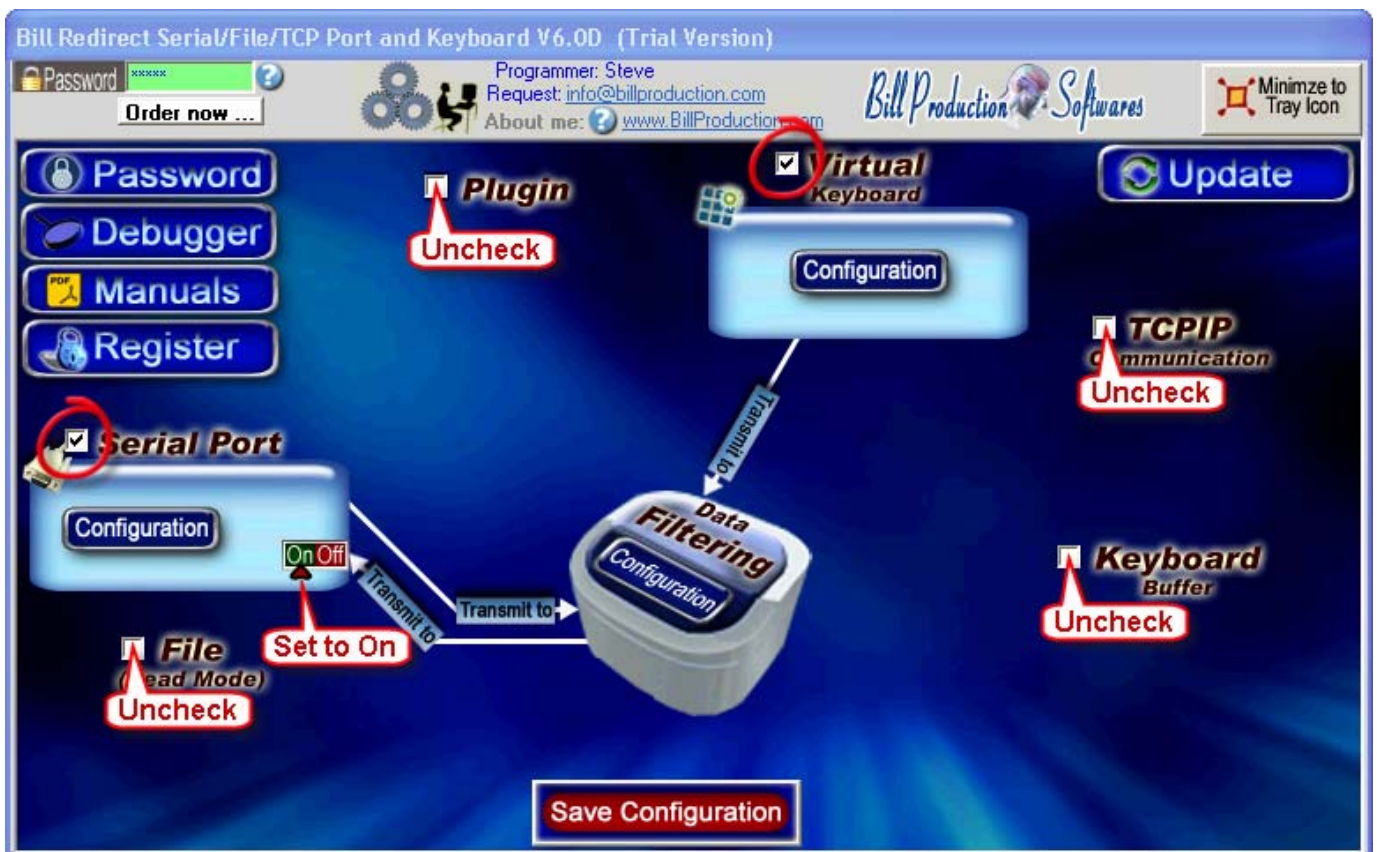
Step by Step Configuration

This tutorial shows how you can opening/closing relays with Bill Redirect software via virtual keyboard buttons.

Hardware Controllers: www.iorelay.com

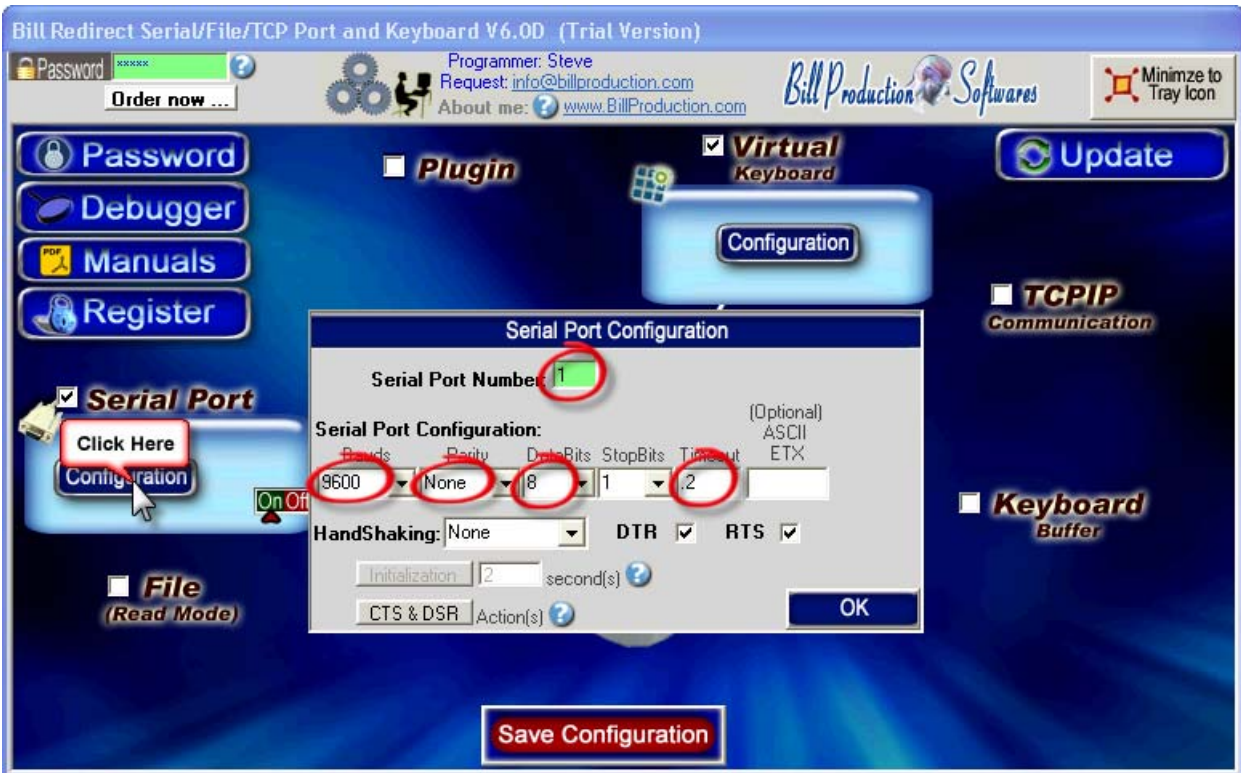
Perfect to control door lock with, Bell, light, motor, Cameras, Robot ...

Step #1 (General)



Disable all except the **Serial Port** and **Virtual Keyboard** sections
Set the switch Serial Port to: **On**

Step #2 (Serial Port Configuration)



Click on button Serial Port: **Configuration**

Set the HandShaking to: **None**

Activate the options: **DTR** and **RTS**

Enter the **Serial Port Number** where your Relay Controller is connected

If the back color field is GREEN, it's because the COM is present and available.

Use this Serial Port Configuration:

Bauds: **9600**

Parity: **None**

DataBits: **8**

Timeout: **.2**

Commands to control Relays 1 to 8

Description	Command
Relay #1 ON	{ASCII:248}{ASCII:254}{ASCII:8}
Relay #1 OFF	{ASCII:248}{ASCII:254}{ASCII:0}
Relay #2 ON	{ASCII:248}{ASCII:254}{ASCII:9}
Relay #2 OFF	{ASCII:248}{ASCII:254}{ASCII:1}
Relay #3 ON	{ASCII:248}{ASCII:254}{ASCII:10}
Relay #3 OFF	{ASCII:248}{ASCII:254}{ASCII:2}
Relay #4 ON	{ASCII:248}{ASCII:254}{ASCII:11}
Relay #4 OFF	{ASCII:248}{ASCII:254}{ASCII:3}
Relay #5 ON	{ASCII:248}{ASCII:254}{ASCII:12}
Relay #5 OFF	{ASCII:248}{ASCII:254}{ASCII:4}
Relay #6 ON	{ASCII:248}{ASCII:254}{ASCII:13}
Relay #6 OFF	{ASCII:248}{ASCII:254}{ASCII:5}
Relay #7 ON	{ASCII:248}{ASCII:254}{ASCII:14}
Relay #7 OFF	{ASCII:248}{ASCII:254}{ASCII:6}
Relay #8 ON	{ASCII:248}{ASCII:254}{ASCII:15}
Relay #8 OFF	{ASCII:248}{ASCII:254}{ASCII:7}
All Relay ON	{ASCII:248}{ASCII:254}{ASCII:30}
All Relay OFF	{ASCII:248}{ASCII:254}{ASCII:29}

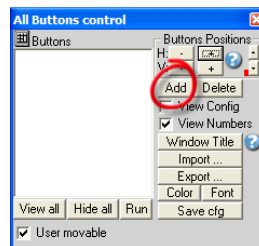
** To use Relay Controllers 16 / 24... or to do more, contact info@billproduction.com*

Step #3 (Virtual Keyboard 2 buttons example)

This step show how with two virtual buttons you can open and close the Relay #1



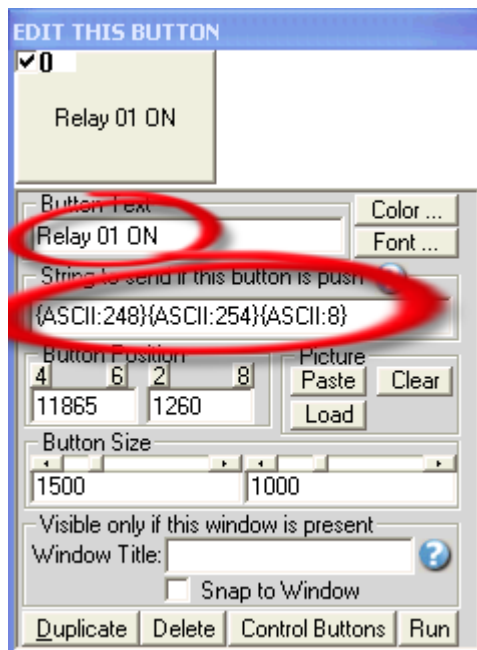
Click on button: **Configuration**



Enable the option: **User movable**

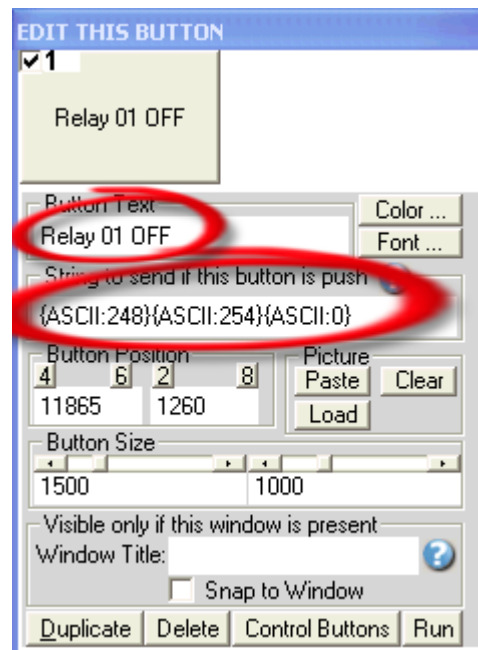
Click on button: **Add**

Click again on button: **Add**



Enter in field "Button Text" : **Relay 01 ON**

Enter in field "String to send ... is push" : **{ASCII:248}{ASCII:254}{ASCII:8}**

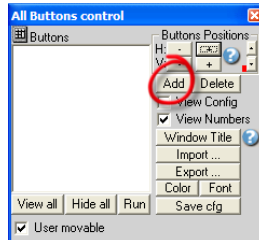


Enter in field "Button Text" : **Relay 01 OFF**

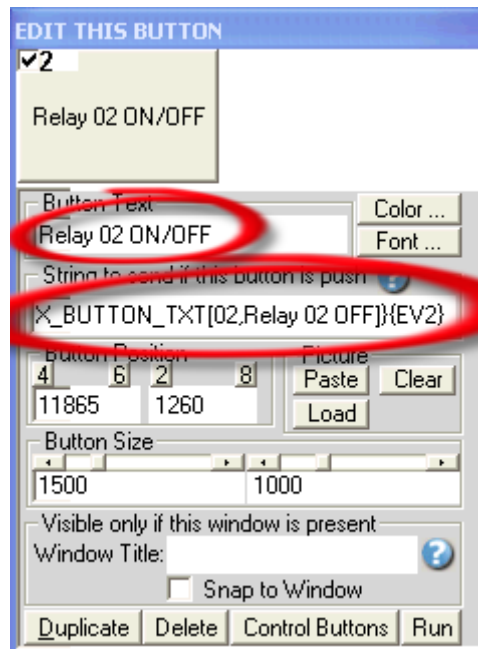
Enter in field "String to send ... is push" : **{ASCII:248}{ASCII:254}{ASCII:0}**

Step #4 (Virtual Keyboard 1 button example)

This step show how with one virtual button you can open the Relay #2 when the first time this button is pressed and close this really when it's pressed again



Click on button: **Add**



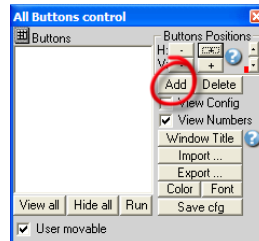
Enter in field "Button Text" : **Relay 02 ON/OFF**

Enter in field "String to send ... is push" :

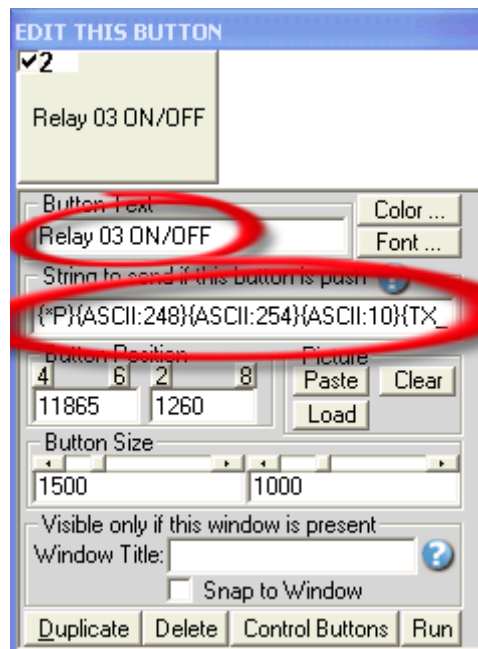
`{EV1}{ASCII:248}{ASCII:254}{ASCII:9}{TX_BUTTON_TXT[02,Relay 02 ON]}{EV1}{EV2}{ASCII:248}{ASCII:254}{ASCII:1}{TX_BUTTON_TXT[02,Relay 02 OFF]}{EV2}`

Step #5 (Virtual Keyboard 1 button second example)

This step show how with one virtual button you can open the Relay #3 when the button is pressed and close this relay when it is released.



Click on button: **Add**



Enter in field “Button Text” : **Relay 03 ON/OFF**

Enter in field “String to send ... is push” :

```
{*P}{ASCII:248}{ASCII:254}{ASCII:10}{TX_BUTTON_TXT[03,Relay 03  
ON]},{*P}{*R}{ASCII:248}{ASCII:254}{ASCII:2}{TX_BUTTON_TXT[03,Relay 03 OFF]},{*R}
```

Save Configuration

Click on button: **Save Configuration**

Click on button: **Minimize to Tray Icon**

TEST

For more documentation visit:

<http://www.billproduction.com/documentation.html>



**If a problem persist use the
Software configuration and integration service
It's free, fast, and efficient !
Submit your case to info@billproduction.com
and receive a customized solution !**



PERSONALIZE

You can personalize my software with your company name, logo, skins, password, directory... With this possibility you can distribute my software with your company information ! The end user, will think that you are the creator of this software !

- To Extract the current configuration setting, just type in the field password: **SAVE_SKIN**
- After this action, a message box appear to indicate where is the configuration.
- Now you can modify this configuration files for what you want (Skin*.*)).
- To re-load your skin modification type in the password field: **LOAD_SKIN**

**At startup my software load automatically your configuration*

To open the mouse position monitor, type **MOUSE in the field password and move the main window in the left top corner.*

How change the default configuration directory:

**By default the configuration of my software is in the directory: C:\BillProduction.CFG*

To change this directory:

- In the same directory that my .exe application or in your C:\ modify the file: **BPCFGDIR.TXT**

** This file contain the default configuration directory.*

** Several BillRedirect softwares in differents computers, can use the same directory over the network. If the configuration changed in a computer, then other computers automatically synchronize in the next 5 seconds.*

All the configuration is by default in C:\BillProduction.cfg. * then to duplicate the configuration from a computer to another, just copy this directory.*

** Don't forget to close Bill Redirect on target computer before copy the configuration.*



For more flexibility/options or an installation package build for your company:

info@BillProduction.com

**Also available on request, all our advertising (PDF format) are available in source mode (Document Word), send your request by e-mail to: info@BillProduction.com*