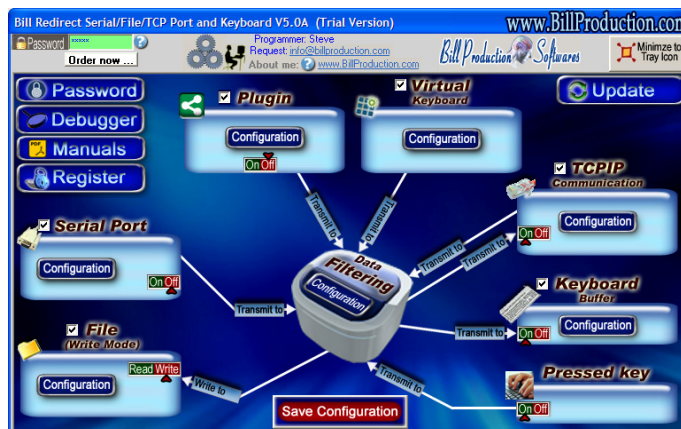




Bill Redirect

Send BluePrint fingerprint Symcod reader numbers directly in your existing application software

Documentation revision: 27/03/2011



Use this documentation with the product : Bill Redirect 5.0J and more

Software configuration and integration service

It's free, fast, and efficient !

Submit your case to info@billproduction.com

and receive a customized answer !

Use this documentation with the product : Bill Redirect Version 7.0P or more.

Our Internet site: <http://www.billproduction.com/>

Email: info@BillProduction.com

**This documentation demonstrate how
Send BluePrint fingerprint Symcod reader
numbers directly in your existing application software**



The following instructions apply to:
BluePrint fingerprint Symcod reader
www.symcod.com

Step #1

Download and install Bill Redirect software

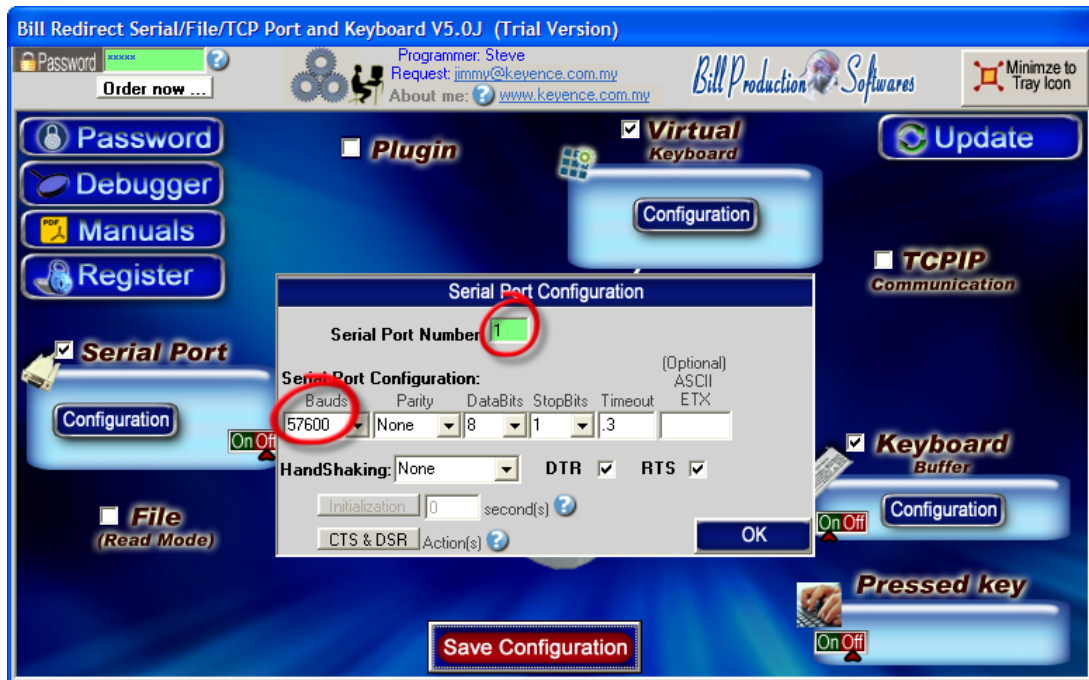
http://www.billproduction.com/Bill_COMtoKB.ZIP

Step #2



Disable all except the **Serial Port** and **Keyboard Buffer** section.
Set to **OFF** Serial Port and Pressed key switch.

Step #3



Click on button: **Configuration**.

Enter the **Serial Port Number** where your BluePrint Symcod reader is connected

The Serial Port Configuration is:

Bauds: 57600 Parity: None Databits: 8 StopBits: 1 Timeout: .3

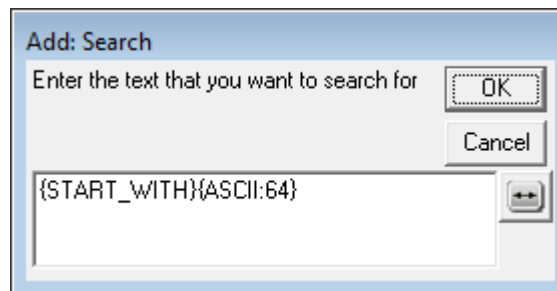
Step #4



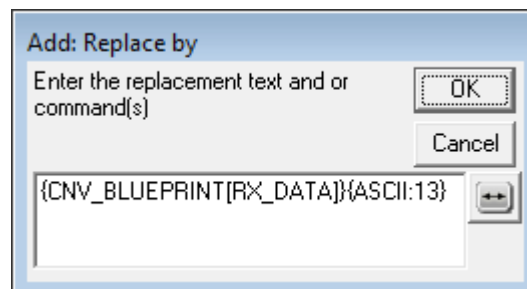
Click on button: **Configuration**



Click on button: **Add**

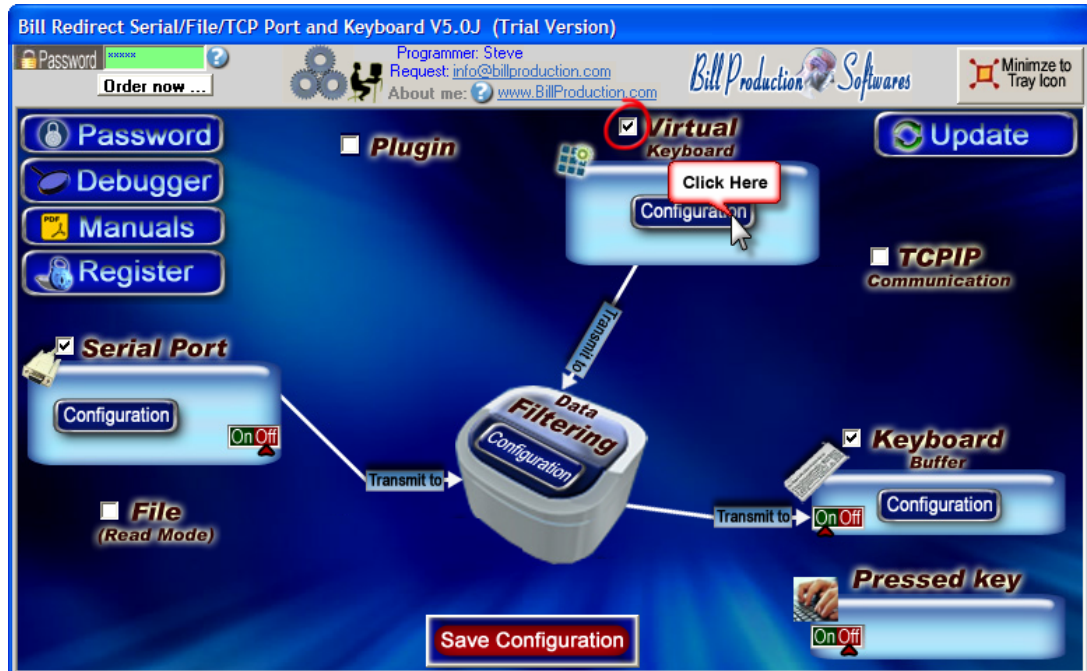


Enter in this field: **{START_WITH}{ASCII:64}**



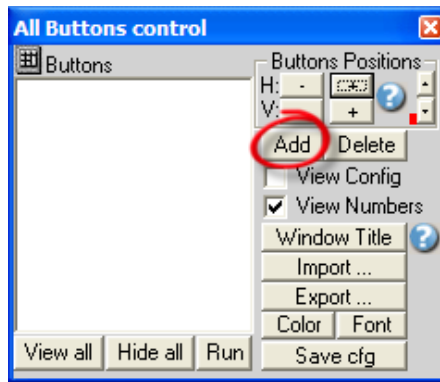
Enter in this field: **{CNV_BLUEPRINT[RX_DATA]}{ASCII:13}**

Step #6

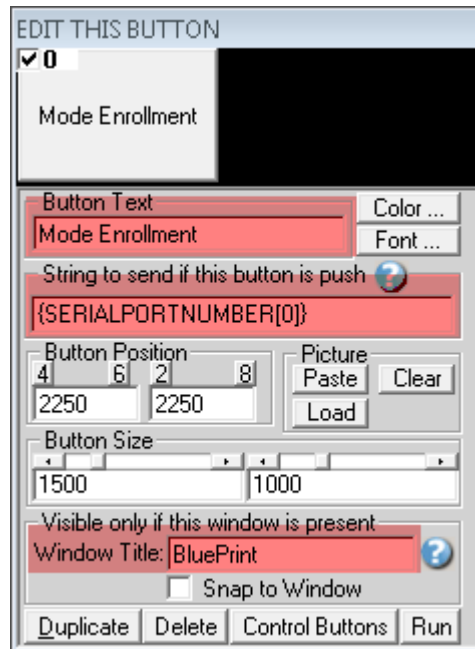


Enable the section: **Virtual Keyboard**
Click on button: **Configuration**

Step #7



Click on button: Add



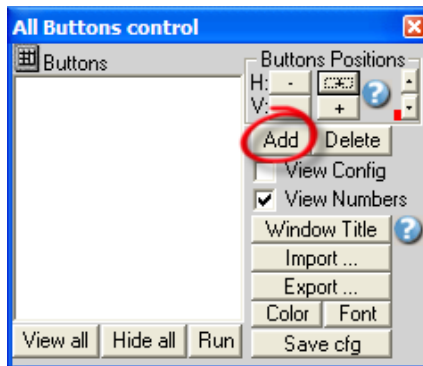
Enter in the field “Button Text”: Mode Enrollment

Enter in the field “String to send ... is push”: {SERIALPORTNUMBER[0]}

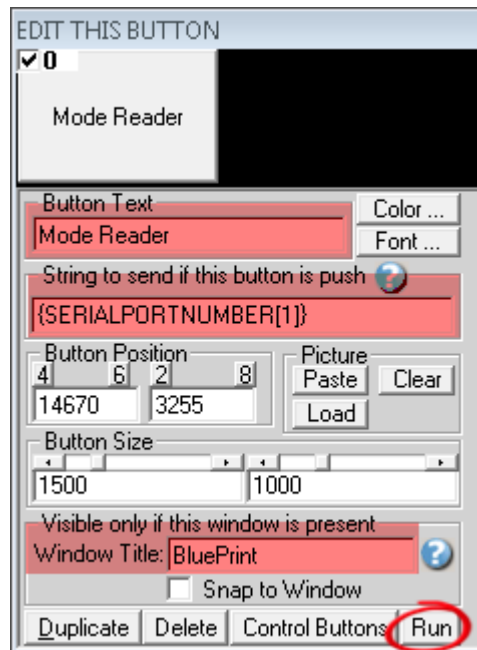
Enter in the field “Window Title”: BluePrint

Move this button on: The top right in your Windows

Step #8



Click on button: Add

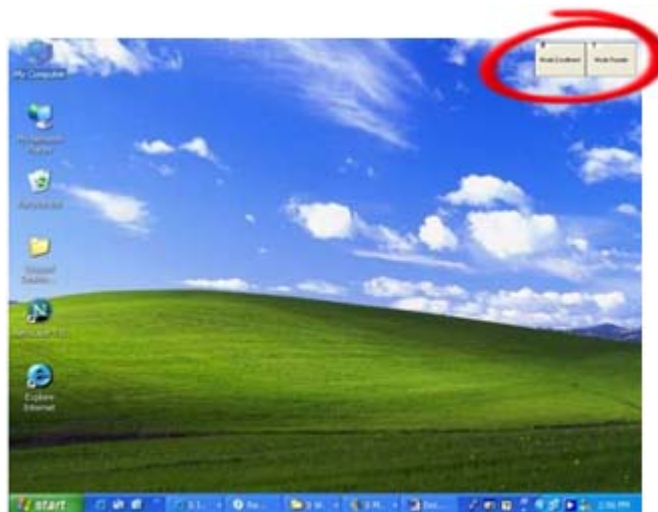


Enter in the field “Button Text”: Mode Reader

Enter in the field “String to send ... is push”: {SERIALPORTNUMBER[1]}

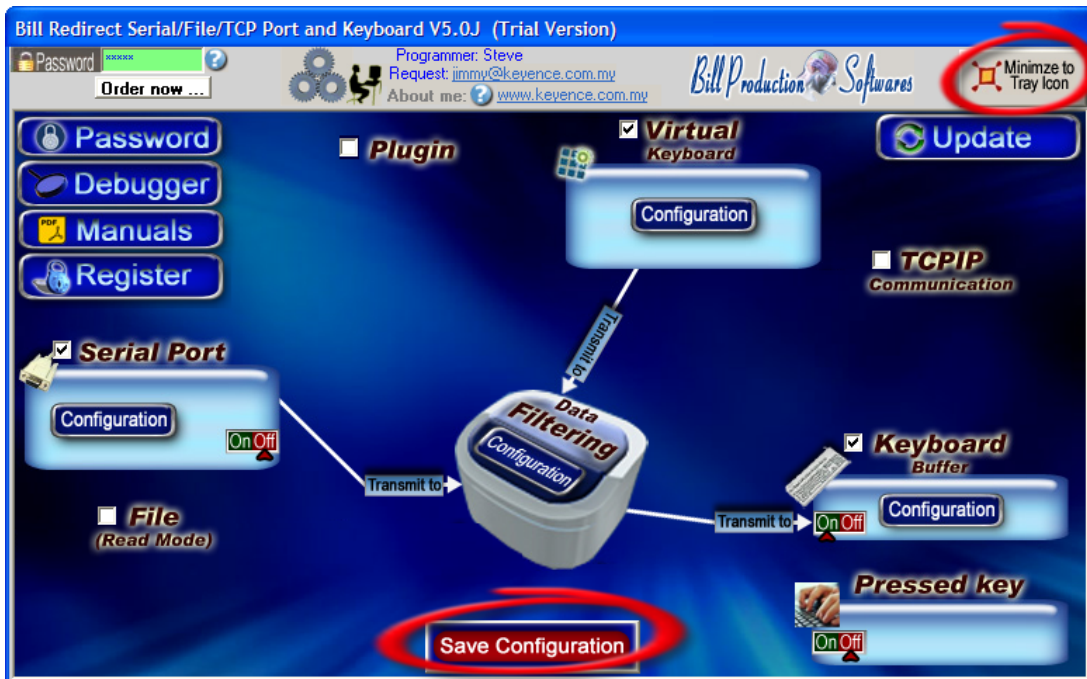
Enter in the field “Window Title”: BluePrint

* Replace the number **1** by the Serial Port Number where your BluePrint Symcod reader is connected



Move this button on: The top right in your Windows (just across the first button)

Step #9



On main screen Click on button: **Save Configuration**

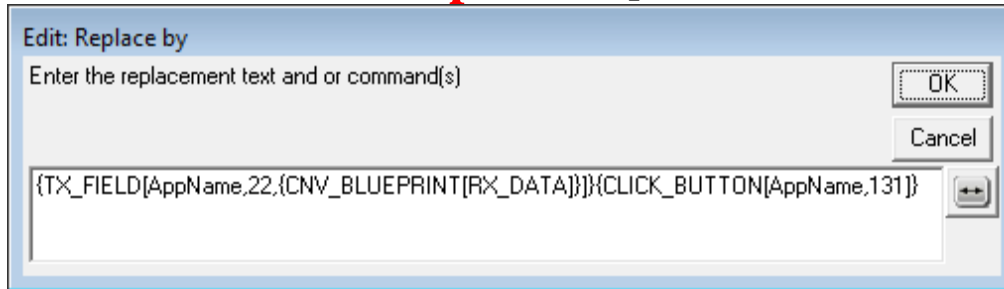
Click on button: **Minimize to Tray Icon**

Open the Windows **NotePad**

At this step If your configuration is correct
you can see the each Finger number appear in the NotePad

To send BluePrint number directly in a field of another software and click on a button,
use
the command **TX_FIELD** and **CLICK_BUTTON** commands

Example At Step #5:



`{TX_FIELD[AppName,22,{CNV_BLUEPRINT[RX_DATA]]}{CLICK_BUTTON[AppName,131]}`

For more information, consult the product manual:
http://www.billproduction.com/Bill_Redirect_Manual.pdf

Optional: Create a log file (Date, Time, UserNumber) readings made by the BluePrint reader.



Click on button: **Configuration**



Click on button: **Add**

Enter in this field:

{ALL_RX}

Enter in this field:

{TX_FILE[C:\LOG_BluePrint.TXT,{CURDATE:MM-DD-YYYY}]{ASCII:9}{CURTIME}{ASCII:9}RX_DATA}}RX_DATA

If you want log file and not receive the number via the keyboard, just uncheck the section Keyboard Buffer.

On main screen Click on button: **Save Configuration**

Click on button: **Minimize to Tray Icon**

At this step If your configuration is correct
you can see the each Finger number appear in the file: **C:\LOG_BluePrint.TXT**

For more documentation visit:



<http://www.billproduction.com/documentation.html>



**If a problem persist or to do more
use our
Software configuration and integration service
It's free, fast (*usually the same day*), and efficient !
Submit your case to **info@billproduction.com**
and receive a customized solution !**



For more flexibility/options or an installation package build for your company: info@BillProduction.com