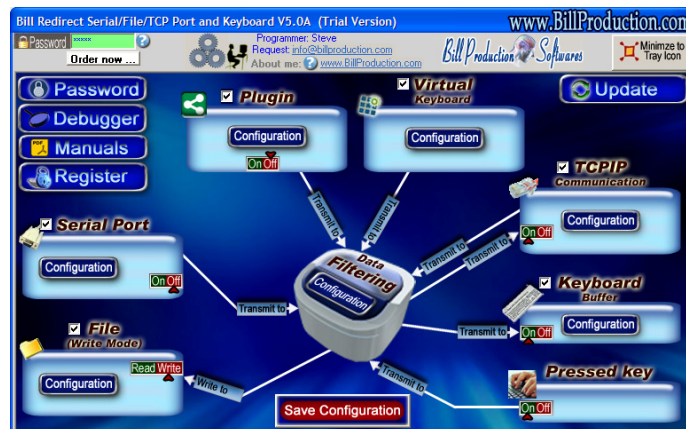




Bill Redirect

Send data in your Microsoft Access via a hotkey

Documentation: 09/06/2008



Use this documentation with the product : Bill Redirect 5.0J and more

Software configuration and integration service

It's free, fast, and efficient !

Submit your case to info@billproduction.com
and receive a customized answer !

Our Internet site: <http://www.billproduction.com/>

Email: info@BillProduction.com

This documentation demonstrate how Bill Redirect can sent Serial Scanner (Barcode, Proximity, scale...) data to Microsoft Access via a hotkey



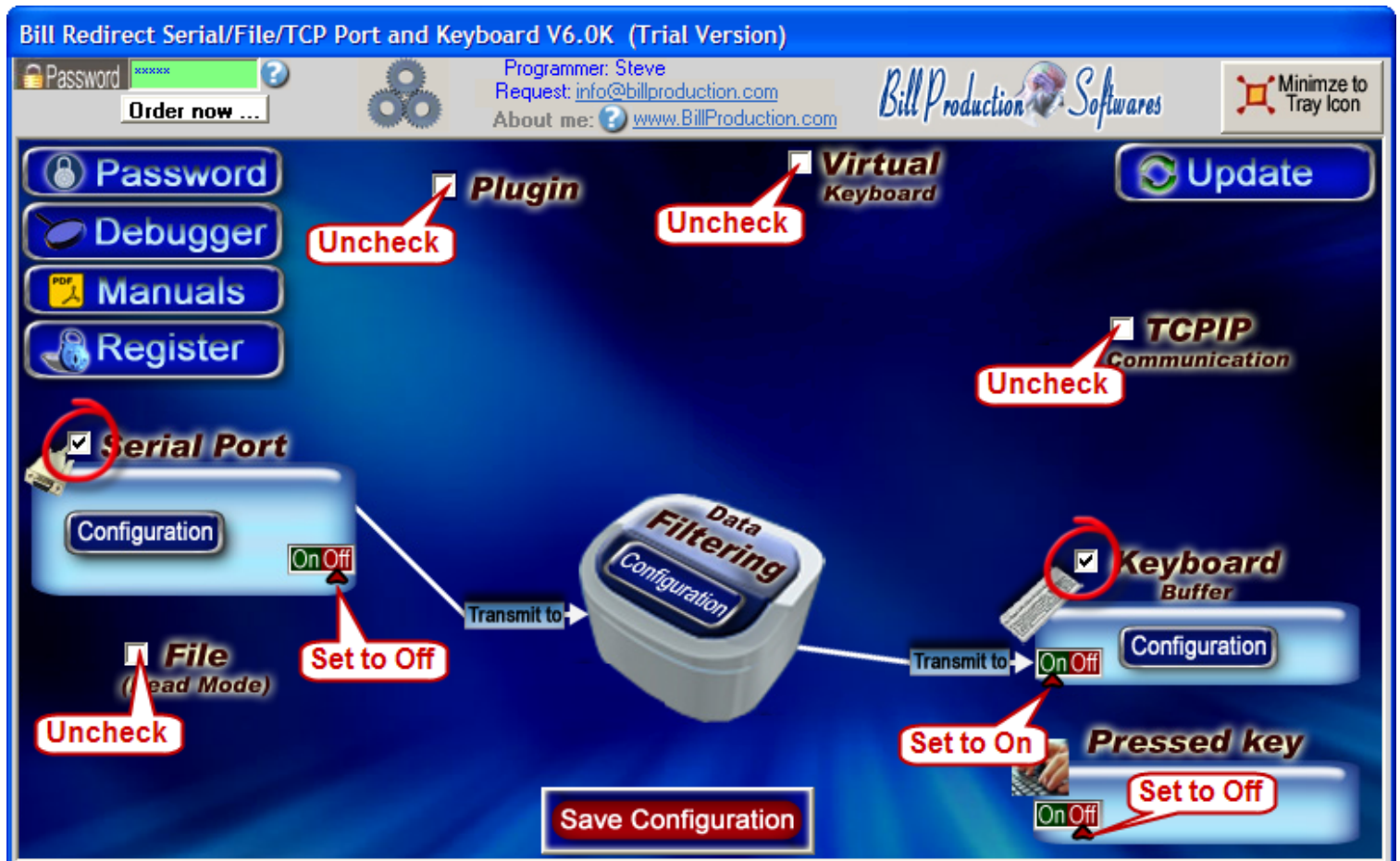
The bottom section features the Microsoft Access logo, which includes a key icon in a square frame. Below the logo, the text 'Microsoft Access' is displayed in a large, bold font. In the background, a blurred screenshot of a Microsoft Access database is visible, showing a table with columns and rows of data.

Step #1

Download and install Bill Redirect software

http://www.billproduction.com/Bill_COMtoKB.ZIP

Step #2 (General configuration)



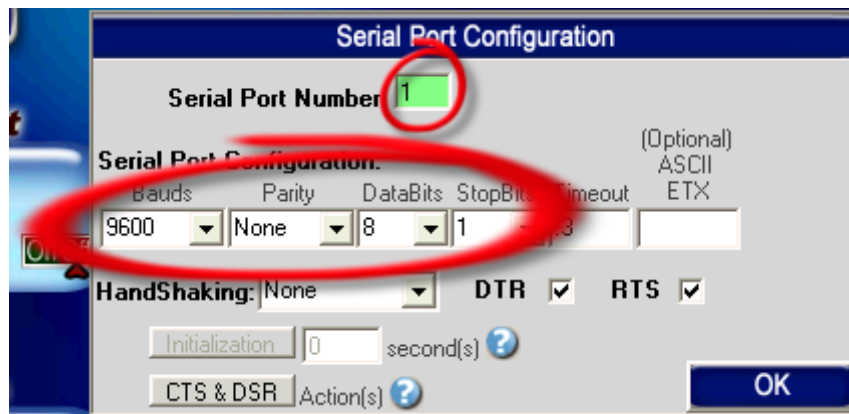
Disable all except the **Serial Port** and **Keyboard Buffer** section

Set the Serial Port switch to: **OFF**

Set the Keyboard Buffer switch to: **ON**

Set the Pressed Key switch to: **OFF**

Step #3 (Serial Port configuration)



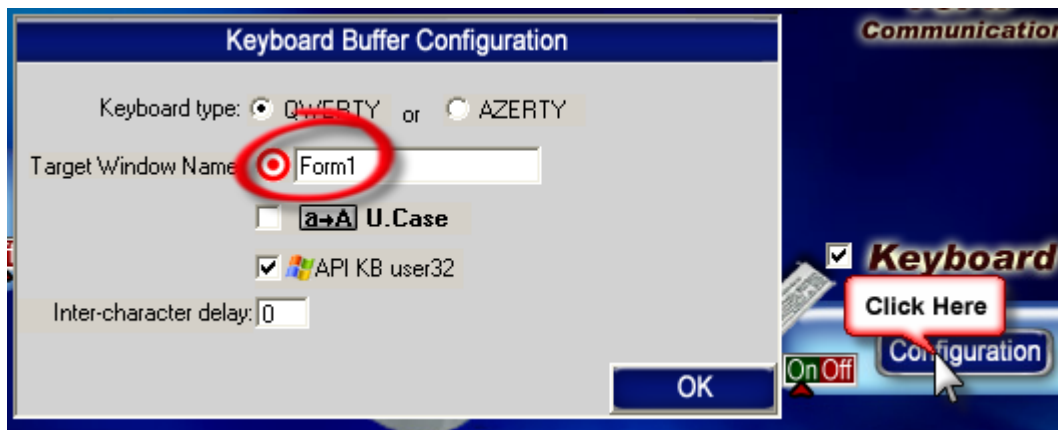
Click on button: **Serial Port Configuration**

Enter the **Serial Port Number** where your Peripheral is connected
Chose the Serial Port Configuration corresponding to your peripheral

Optional: If the data sent by your peripheral ends with a [ENTER], then enter **13** in the optional field otherwise leave it blank

(Optional)
ASCII
ETX
13

Step #4 (Target window configuration)



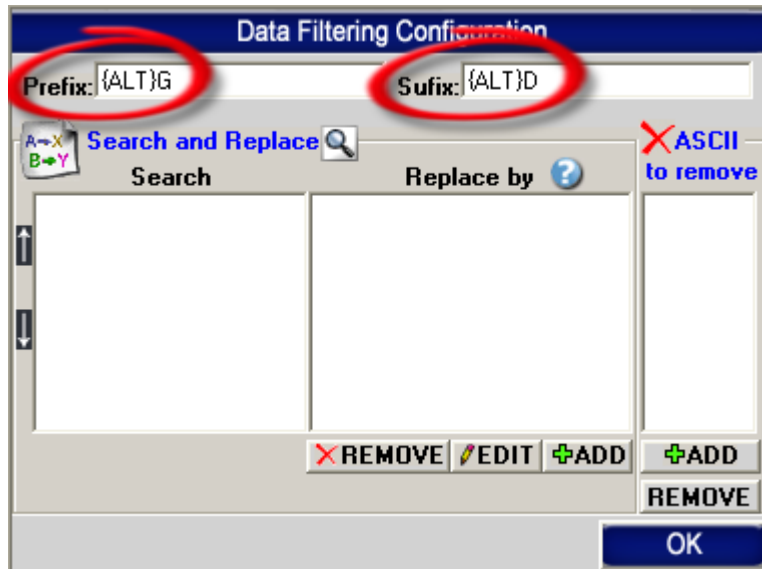
Click on button: **Keyboard Buffer Configuration**

In the field “Target Window Name” enter: **Form1**

Step #5 (Hotkeys configuration)



Click on button: **Data Filtering Configuration**



In the field "Prefix:" enter: **{ALT}G**

In the field "Sufix:" enter: **{ALT}D**

OK

Click on button: **OK**

Save Configuration

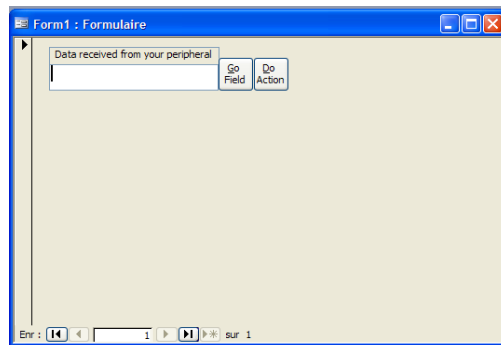
Click on button: **Save Configuration**

Step #6 (download MS Access example)

Microsoft Access Configuration
You can download this example via this link:

(MS Access 2003 and more)

<http://www.billproduction.com/MSAccess02.zip>



The following demonstrates how you can receive Bill Redirect data in Microsoft Access via a hotkey.

At this step if your configuration is correct
you can see the data received by your serial peripheral appear in Microsoft Access Form1

For more documentation visit:



<http://www.billproduction.com/documentation.html>



If a problem persist or to do more
use our
Software configuration and integration service
It's free, fast (usually the same day), and efficient !
Submit your case to info@billproduction.com
and receive a customized solution !