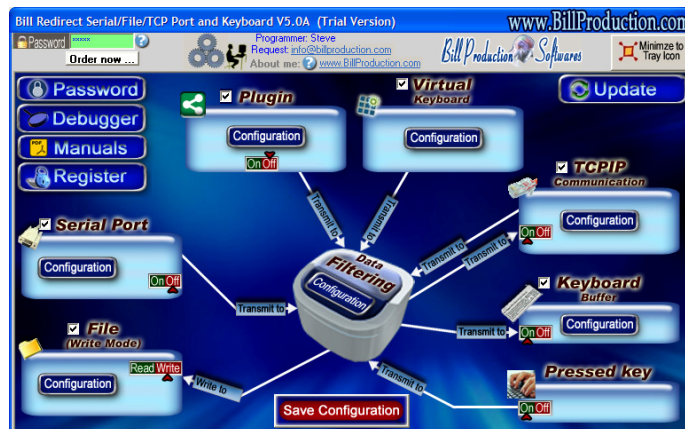




## Bill Redirect

### Send data directly in your Microsoft Access

Documentation: 18/11/2008



Use this documentation with the product : Bill Redirect 5.0J and more

**Software configuration and integration service**

**It's free, fast, and efficient !**

Submit your case to [info@billproduction.com](mailto:info@billproduction.com)  
and receive a customized answer !

Our Internet site: <http://www.billproduction.com/>

Email: [info@BillProduction.com](mailto:info@BillProduction.com)

# This documentation demonstrate how Bill Redirect can sent Serial Scanner (Barcode, Proximity, scale...) Reader numbers directly in Microsoft Access



The bottom section features the Microsoft Access logo on the left, which includes a key icon. To the right is a screenshot of a Microsoft Access database table. The table has a red header and contains numerical data. The visible data is as follows:

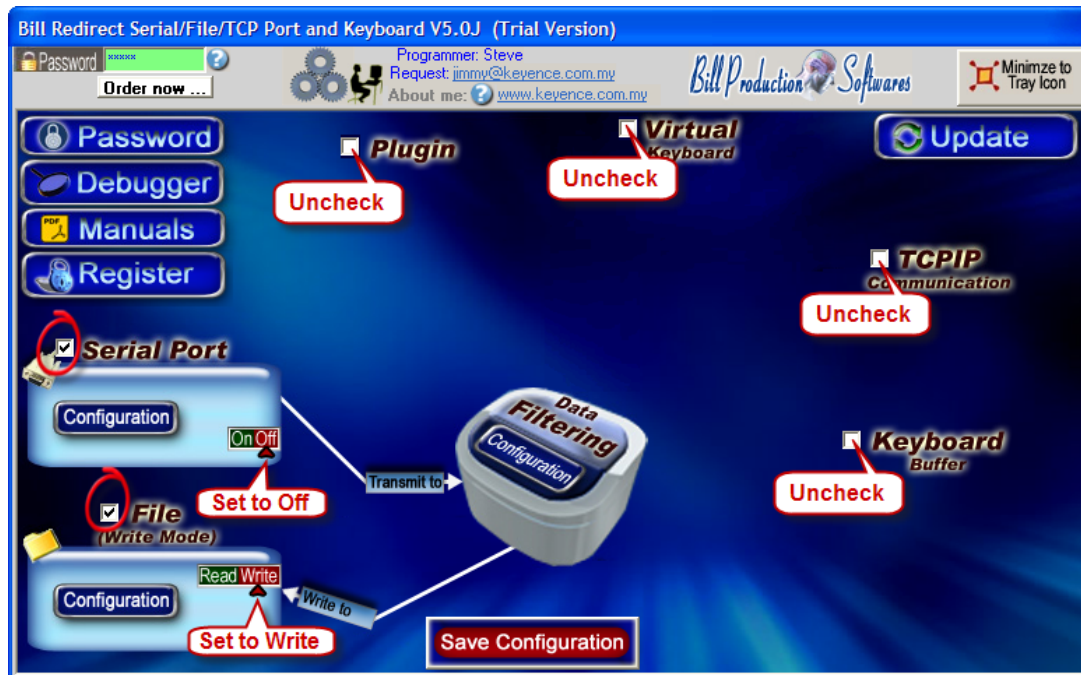
Item	Price
2	120.00
3	120.00
7	150.00
8	150.00
9	200.00
14	273.71
2	320.45
5	304.14
9	472.97
10	507.57
11	60.00
2	81.00
10	85.96
3	91.01

## Step #1

Download and install Bill Redirect software

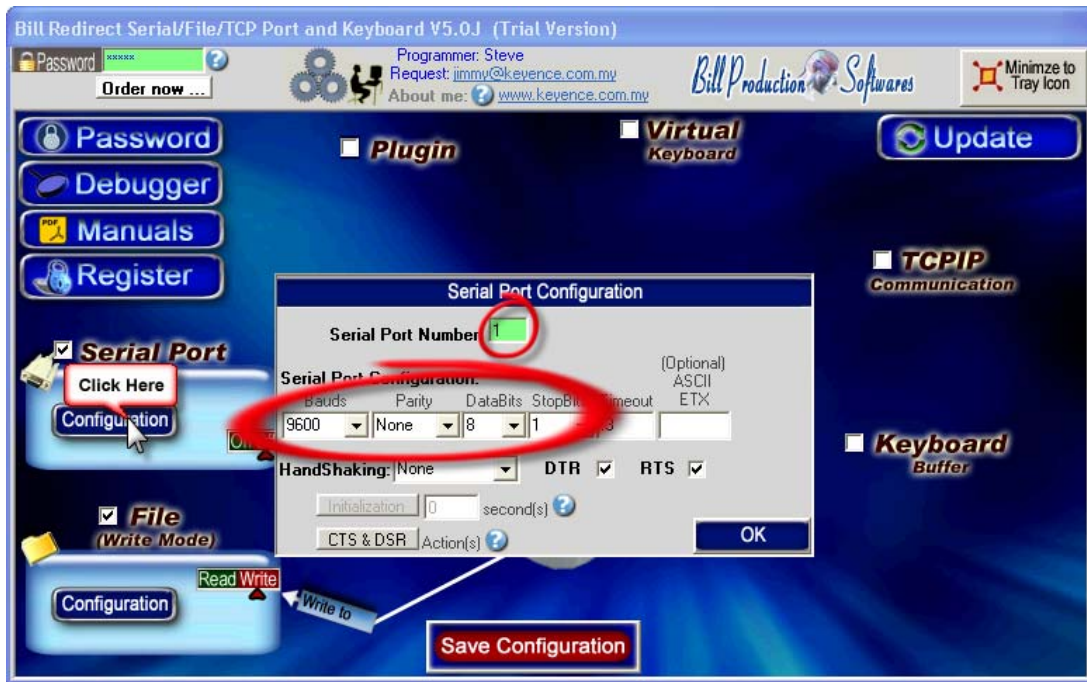
[http://www.billproduction.com/Bill\\_COMtoKB.ZIP](http://www.billproduction.com/Bill_COMtoKB.ZIP)

## Step #2



Disable all except the **Serial Port** and **File** section  
Set the Serial Port switch to: **OFF**  
Set the File switch to: **Write**

## Step #3



Click on button: **Configuration**

Enter the **Serial Port Number** where your Peripheral is connected  
Chose the Serial Port Configuration corresponding to your peripheral

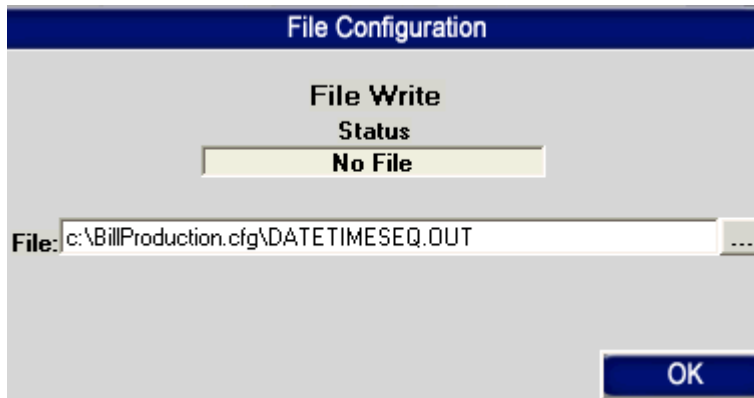
If the data sent by your peripheral ends with a [ENTER], then enter **13** in the optional field  
otherwise leave it blank

(Optional) ASCII ETX
13

## Step #4



Click on button: **Configuration**



In the field "File:" enter: **C:\BillProduction.cfg\DATETIMESEQ.OUT**

OK

Click on button: **OK**

Save Configuration

Click on button: **Save Configuration**



## Microsoft Access Configuration

You can download this example via this link:

(MS Access 2003 and more)

<http://www.billproduction.com/MSAccess01.zip>

The following demonstrates how you can receive Bill Redirect data in Microsoft Access via a timer.

1. Create a sample database [Sample.mdb](#)
2. Create a table with 3 fields:

Field Name	Data Type
ID_Barcode	Text
ID_Date	Date/Time
ID_Time	Date/Time

Save this Table to: **BillRedirect**

*\* Important: Use no Primary Key !*

3. Create a new form and open it in "Design view"
4. Add on this form 3 Text Box:

Form example

Barcode:	ID_Barcode
Date:	ID_Date
Time:	ID_Time

Each Text Box Properties

Name	Data / Control Source
TextBoxBarcode	ID_Barcode
TextBoxDate	ID_Date
TextBoxTime	ID_Time

5. Set Form properties Data / Source: **BillRedirect**

## Step #6

6. Insert the following source code:

```
Private Sub Form_Load()  
    Me.TimerInterval = 100  
End Sub  
  
Public Sub Form_Timer()  
    Call RX_BillRedirect  
End Sub  
  
Public Sub RX_BillRedirect()  
    On Error GoTo BillRedEnd  
    Const TheDirectory = "c:\BillProduction.cfg\  
    Dim TheFile As String  
    Dim TheData As String  
    TheFile = Dir(TheDirectory & "*.OUT")  
    If TheFile <> "" Then  
        Open TheDirectory & TheFile For Input As #1  
        Line Input #1, TheData  
        'The data is in the variable: TheData  
        '...HERE... ADD COMMANDS TO APPEND DATA TO YOUR TABLE  
  
        '----[Example]-----  
        DoCmd.GoToRecord , , acNewRec  
        TextBoxBarcode.SetFocus  
        TextBoxBarcode.Text = TheData  
        TextBoxDate.SetFocus  
        TextBoxDate.Text = Date  
        TextBoxTime.SetFocus  
        TextBoxTime.Text = Time  
        '----[Example]-----  
        Close #1  
        Kill TheDirectory & TheFile  
    End If  
    Exit Sub  
  
BillRedEnd:  
    Debug.Print Err.Description  
    Close #1  
End Sub
```

7. Close and save the form  
8. Open the form in mode "Form View"

**At this step if your configuration is correct  
you can see the data received by your serial peripheral appear in Microsoft Access**

For more information, consult the product manual:  
[http://www.billproduction.com/Bill\\_Redirect\\_Manual.pdf](http://www.billproduction.com/Bill_Redirect_Manual.pdf)

**Software configuration and integration service**

**It's free, fast, and efficient !**

**Submit your case to [info@billproduction.com](mailto:info@billproduction.com)  
and receive a customized answer !**