



Bill Redirect Software



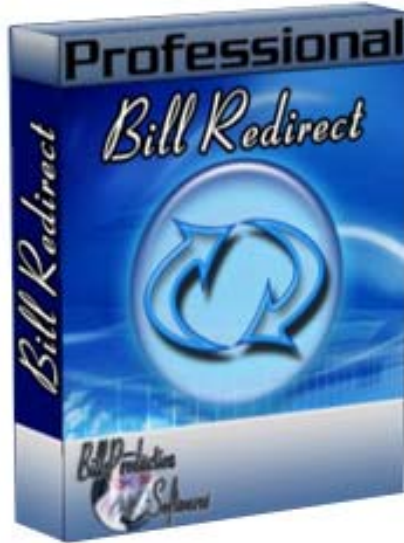
**How redirect data to Microsoft Excel
via the keyboard buffer.**

Documentation: 27/10/2009



Our Internet site: <http://www.billproduction.com/>

Email: info@BillProduction.com



**Bill Redirect software support all version of Microsoft Excel !
This professional multi serial port software enables RS232/TCP serial peripherals to communicate with Microsoft Excel. Bill Redirect allows data received by your peripheral to be entered directly into Microsoft Excel software as if it was typed in using the keyboard.**

No programming or additional hardware required !

Supported Operating Systems: Windows 98,Me,2000,3000,XP,NT4, Vista.

Simply the best Excel compatible software to connect your peripherals !

GENERAL INFORMATION

To configure this software you have to enter in the field password www.billproduction.com,
In the configuration options you have the possibility to change this password for what you
want. To close this software, type END in the password field.




Custom Software Development

With over 15 years of experience in successfully providing Custom Software Development
solutions for over 300 customers, we have honed our processes and skills to cater to your
specific business needs.

To request a feature, a Customize option or any kind of Software:
Contact by email: info@billproduction.com



**If a problem persist or to do more
use our
Software configuration and integration service
It's free, fast (*usually the same day*), and efficient !
Submit your case to info@billproduction.com
and receive a customized solution !**

 This example shows Bill Redirect Software allows data received by a Serial peripheral to be entered directly into Microsoft Excel software as if it was typed in using the keyboard.

IMPORTANT

**Don't install "Bill Redirect Plugin for Microsoft Excel"
This module is not necessary if you use this method.**

Step #1 (Download and install)

Download and install Bill Redirect software

http://www.billproduction.com/Bill_COMtoKB.ZIP

Step #2 (General configuration)



Disable all except the **Serial Port** and **Keyboard Buffer** section.

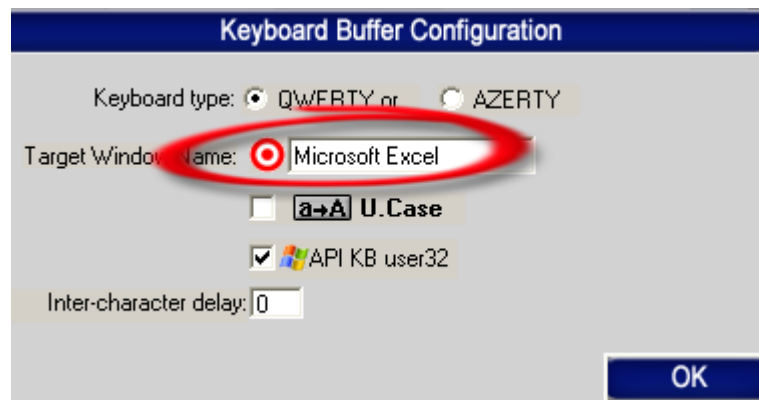
Set to **ON** Keyboard Buffer switch.

Set to **OFF** Serial Port and Pressed key switch.

Step #3 (*Keyboard configuration*)

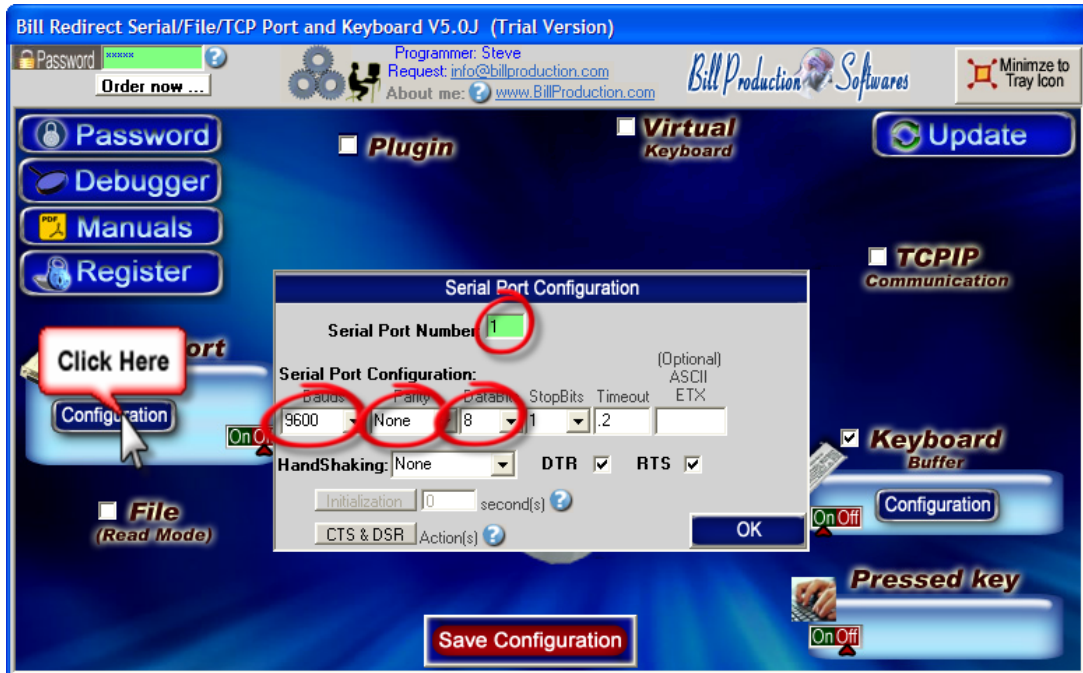


Click on button: Configuration



Enter in field “Target Window Name” : Microsoft Excel

Step #4 (Serial port configuration)



Click on button: **Configuration**

Enter the **Serial Port Number** where your peripheral is connected.

Serial Port Configuration: Enter the configuration of your peripheral.

Step #5 (Test)

OK

Click on button: **OK**

Save Configuration

Click on button: **Save Configuration**
Test

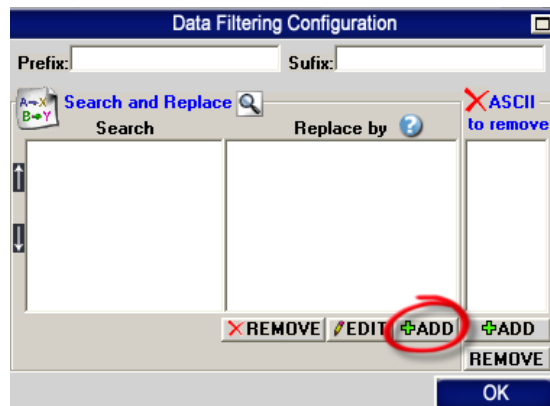
Step #6 (*Optional configuration*)

This optional step shows how you can call a macro command via a hotkey.

Example description:
call a macro command **Ctrl b** followed by the **data** received from your peripheral.



Click on button: **Data Filtering Configuration**



Click on button: **ADD**

In field "Search" enter: **{ALL_RX}**

In field "Replace by" enter: **{CTRL}b{RX_DATA}**

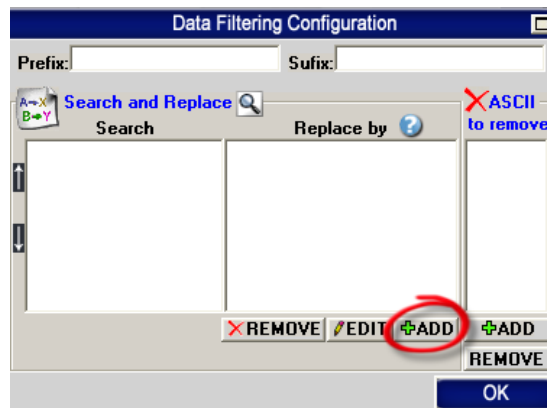
* To create a macro in Excel use the menu **Tools - Macro ...**

Step #7 (*Optional configuration*)

This optional step shows how you can replace the **Enter** by a **Tab** at the end of data. With this possibility Excel move to the next column instead of the next line after each data received by your peripheral.



Click on button: **Data Filtering Configuration**



Click on button: **ADD**

In field "Search" enter: **{ASCII:13}**

In field "Replace by" enter: **{TAB}**

Click on button: **ADD**

In field "Search" enter: **{ASCII:10}**

In field "Replace by" enter: **{ASCII:0}**

Use the manual to see all the commands available:
http://www.billproduction.com/Bill_Redirect_Manual.pdf

For more documentation visit:



<http://www.billproduction.com/documentation.html>

The image shows a 3D rendering of puzzle pieces. One piece is blue and features a white '@' symbol. The other pieces are white and are arranged in a line, with one piece missing, suggesting a puzzle or a problem to be solved.

**If a problem persist or to do more
use our
Software configuration and integration service
It's free, fast (*usually the same day*), and efficient !
Submit your case to info@billproduction.com
and receive a customized solution !**



For more flexibility/options or an installation package build for your company:
info@BillProduction.com

**Also available on request, all our advertising (PDF format) are available in source mode (Document Word), send your request by e-mail to: info@BillProduction.com*