



## Bill Redirect Software How redirect the weight of a USB Scale (Supports several Postal Scales)



Postal USB Scale, Mettler Toledo PS60 PS90, Pitney Bowes, Fairbanks, X.J., CHARDER, Pelouze, SANFORD, DYMO, Endicia, ELANE.XM, Elane Plus BT Bluetooth, Stamps digital USB postal scale



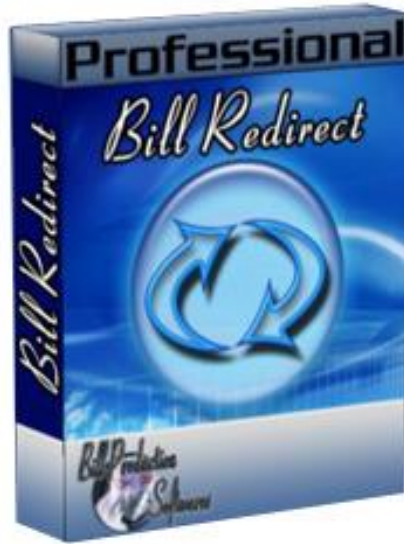
Use this documentation with the product : Bill Redirect Version 8.0L or more.  
(Rev.:19/11/2016)

**RS232 USB Balance and Scale Software:**

[http://www.billproduction.com/billscalebalance/RS232\\_USB\\_balance\\_scale\\_software.htm](http://www.billproduction.com/billscalebalance/RS232_USB_balance_scale_software.htm)

Email: [info@BillProduction.com](mailto:info@BillProduction.com)

## SOFTWARE DESCRIPTION



**Bill Redirect software supports several models of USB scales !**

**This professional software enables USB scales **who do not come with a serial port driver** to communicate with your current Windows applications. Bill Redirect allows information to be entered directly into Windows programs as if it was typed in using the keyboard.**

**No programming or additional hardware required !**

**Supported Operating Systems:** Windows 98, Me, 2000, 3000, XP, NT4, Vista, Windows 7, Windows 8

Simply the best scale software available !

 GENERAL INFORMATION

To configure this software you have to enter in the field password [www.billproduction.com](http://www.billproduction.com). In the configuration options you have the possibility to change this password for what you want. To close this software, type **END** in the password field.



**If a problem persist or to do more  
use our  
Software configuration and integration service  
It's free, fast (*usually the same day*), and efficient !  
Submit your case to [info@billproduction.com](mailto:info@billproduction.com)  
and receive a customized solution !**

# To redirect a USB Scale to keyboard buffer

Use this documentation ONLY if your Scale is USB and do not come with a serial port driver

## Step #1 (General configuration)

First download and install Bill Redirect software:

[http://www.billproduction.com/Bill\\_COMtoKB.ZIP](http://www.billproduction.com/Bill_COMtoKB.ZIP)

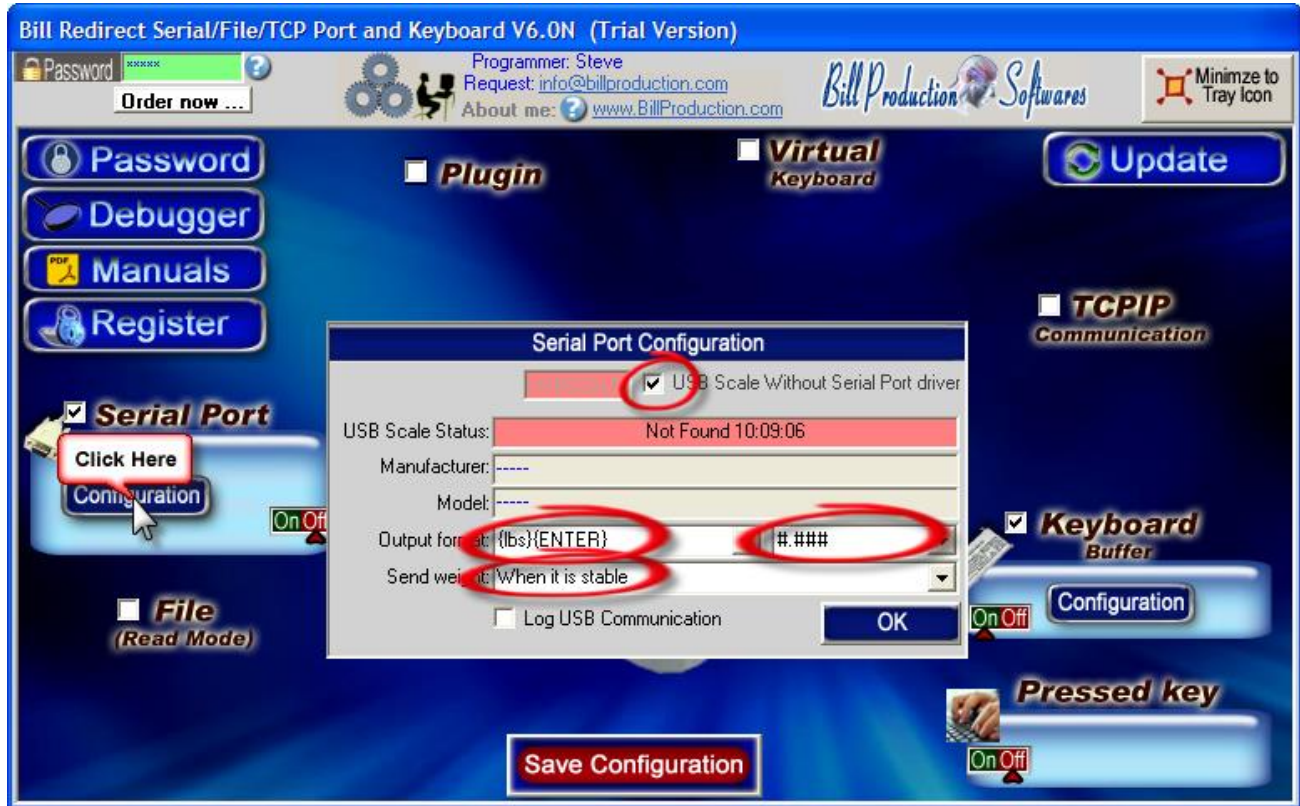
\*To access the configuration, enter the 'Password' field: [www.billproduction.com](http://www.billproduction.com)



Disable all except the **Serial Port** and **Keyboard Buffer** section

Set to **OFF** Serial Port and Pressed key **switch**

## Step #2 (USB configuration)



Activate the option: **USB Scale Without Serial Port driver**

Make sure that your product is plugged and power on

Wait 30 seconds

If after this time it's always written "**Not Found**" in the field status, please contact our technical support: [info@billproduction.com](mailto:info@billproduction.com) include with your email: Your scale **Manufacturer and Model**

Choose the **Output Format**

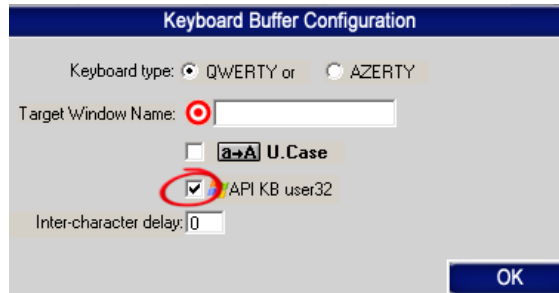
\* You can enter your own format, example to receive the weight with unit: `{lbs} lbs{ENTER}`

Set the option "Send weight" to: **When is stable**

### Step #3 (Keyboard configuration)



Click on button: [Configuration](#)



Activate the option: [API KB user 32](#)

#### The QWERTY option:

Select this option if you use a QWERTY keyboard.

*\*If your keyboard is QWERTY you can see just across the letter Q the letters WERTY*

#### The AZERTY option:

Select this option if you use a AZERTY keyboard.

*\*If your keyboard is AZERTY you can see just across the letter A the letters ZERTY*

#### The Target Windows Name (optional):

With this option you can activate automatically a target windows.

Enter the title of the window where you want redirect the data

\* If you enter nothing, the software redirect the data to the current window.

\* You can enter just a part of the title, for example if the title is “[my application software](#)” you can enter just a part of the title for example: [my application](#)

#### The U. Case option:

The software can switch all lower case characters automatically to upper case.

### Step #4 (Test stable mode)



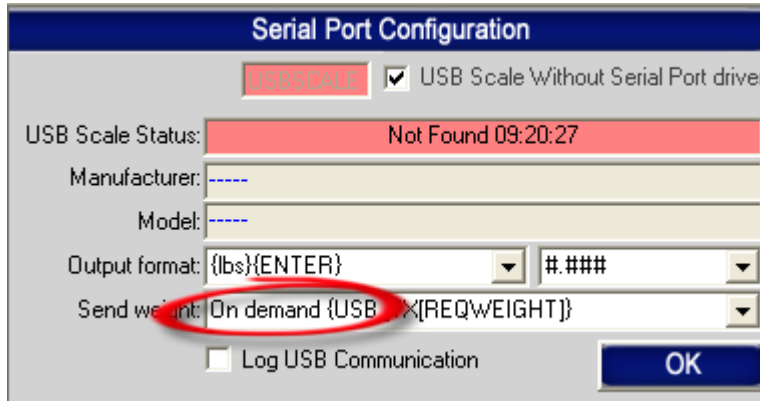
#### TEST YOUR SCALE

Open the Windows [NotePad](#)

[Put something on the scale](#)

The weight should be written in the [NotePad](#) when it is stable.

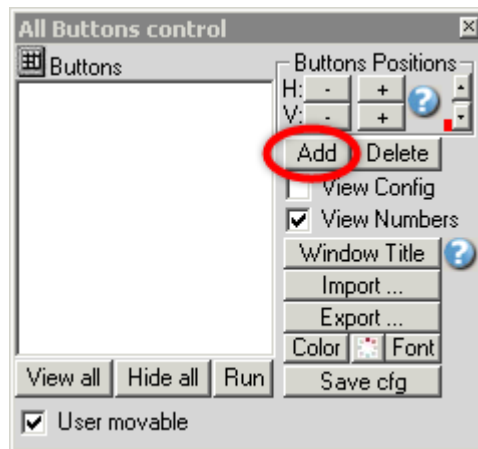
**Step #5** (*Optional: Use a Virtual button to receive the weight*)



In “Serial Port Configuration” set option “Send weight” to: **On demand**



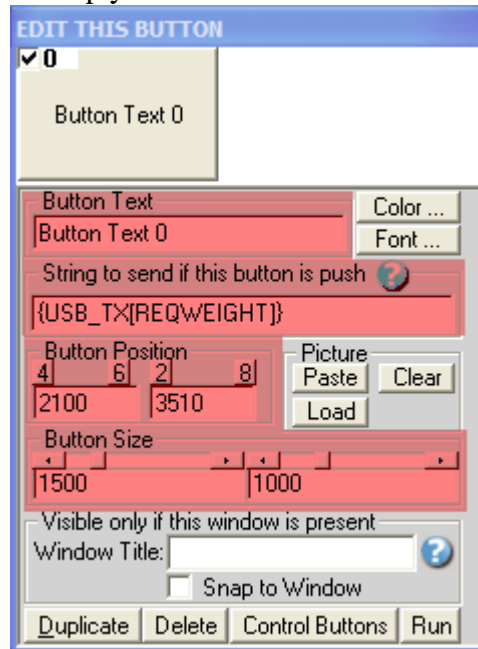
Click on button: **Configuration**



To add a New button, click on button: **Add**

## Step #6 (*Optional: Use a Virtual button to receive the weight*)

At this step you can see a button like this one:



*\*To see the configuration of the button activate the upper left check box*

Enter in field “String to send if this button is push”: `{USB_TX[REQWEIGHT]}`

**Button Text:** Use this field to set what you want to see on the button.

**Button Position:** Use this section to change button position.

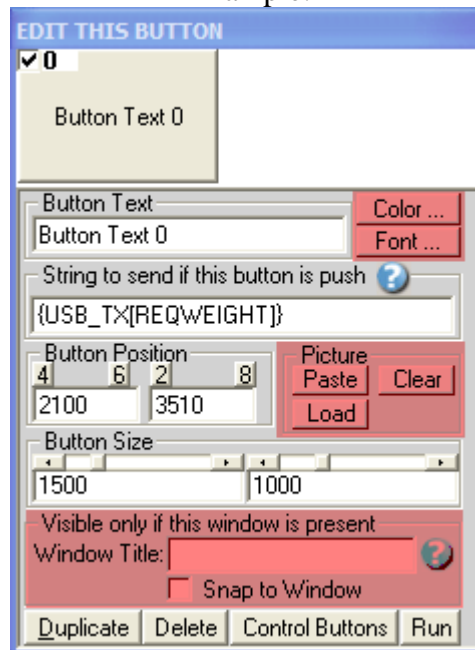
*\* Tips: Activate the NumLock Click the button and use the number 4,6,2 and 8 to change the position.*

**Button Size :** Use this section to change the button size.



## Step #7 (*Optional: Use a Virtual button to receive the weight*)

Example:



### **Window Title** (*optional*):

Option “Window Title” Description: With this option each button of your Virtual Keyboard can appear and disappear when a specific window title is activate.

\*Example: If the window title is “Application weight expert Version 1.2b” and in the field “Window Title” you enter “Weight EXPERT” then each time that this window take the focus this button is visible.

\* To enter more of one window title, separate the title name by a comas:

Example: Weight EXPERT, NOTEPAD, PAGE COUNT

\* If this the field “**Window Title**” is blank, then the button is always visible.

**Color** (*optional*): Use this option to change the button back color.

**Font** (*optional*): Use this option to change the button text font.

**Picture** (*optional*): Use this section to:

[Paste](#) the picture from the Clipboard to the button.

[Clear](#) the picture button.

[Load](#) the picture button.

**Step #8** (*Optional: Use a hotkey to request the weight*)

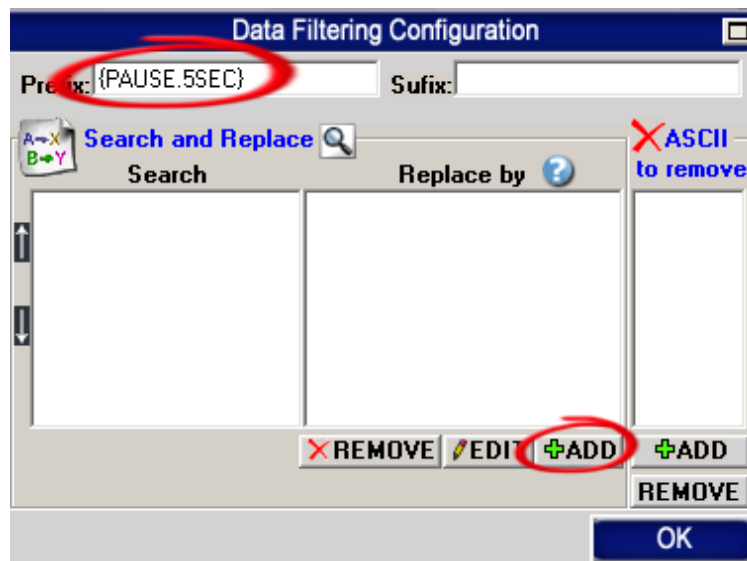
This **optional** step will allow you to request the weight from your scale via a hotkey for example F11.



Section “Pressed key” set the switch to position: **On**



Click on: **Data Filtering Configuration**



Enter in field “Prefix”: `{PAUSE.5SEC}`

Click on: **ADD**

Enter in field “Search”: `{F11}`

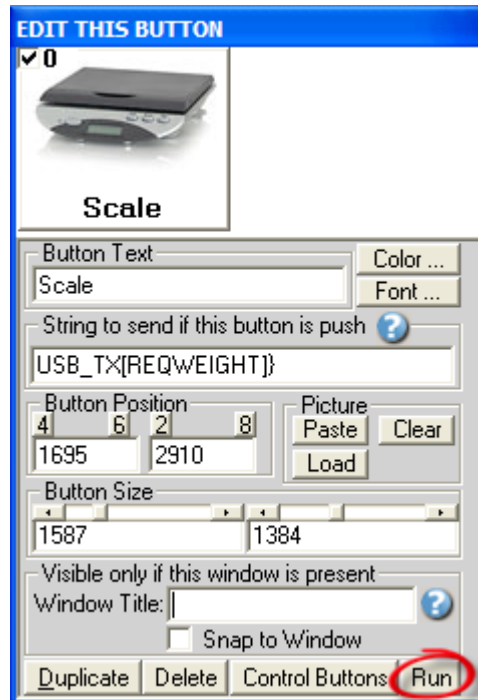
*\* You can replace the hotkey {F11} by what you want example {ALT}{F10}*

Enter in field “Replace by”: `{TX_KEYB[{}]{CTRL_UP}{ALT_UP}{USB_TX[REQWEIGHT]}}`

**Step #9** (Test: Virtual Button / Hotkey to request the weight)

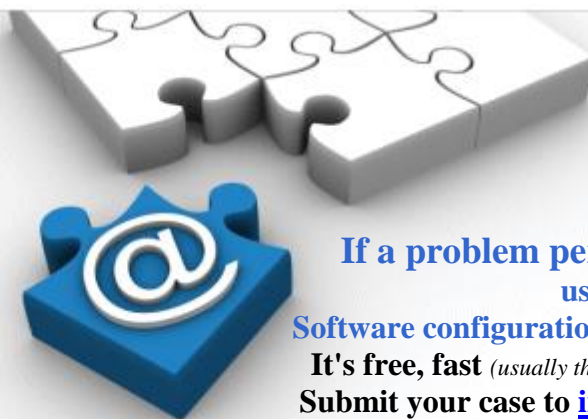


TEST YOUR SCALE



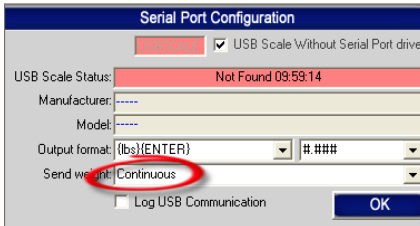
Click on button: [Run](#)  
Open the Windows [NotePad](#)  
[Put something on the scale](#)  
Click on your: [Virtual Button](#)

The weight should be written in the [NotePad](#) when you click the button.



**If a problem persist or to do more  
use our  
Software configuration and integration service  
It's free, fast (usually the same day), and efficient !  
Submit your case to [info@billproduction.com](mailto:info@billproduction.com)  
and receive a customized solution !**

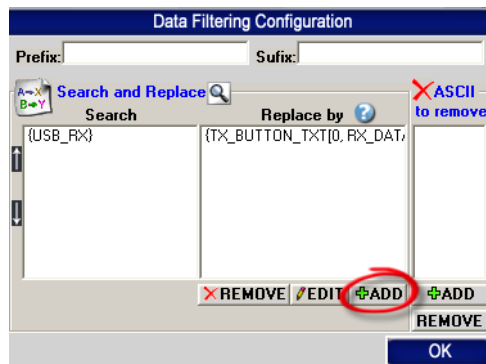
**Step #10 (Optional: To see the weight in real-time directly on the virtual button)**



In “Serial Port Configuration” set option “Send weight” to: **Continuous**



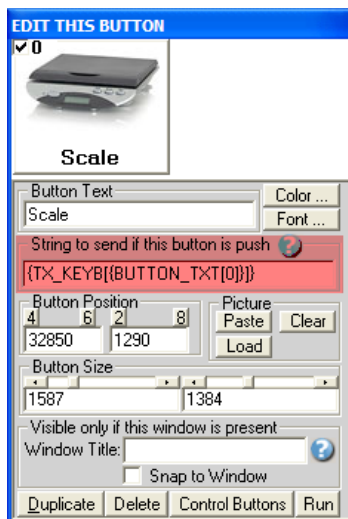
Set the “Keyboard Buffer” switch to: **OFF**



Click on button: **ADD**

In the field “Search” enter: **{USB\_RX}**

In the field “Replace by” enter: **{TX\_BUTTON\_TXT[0], RX\_DATA}**

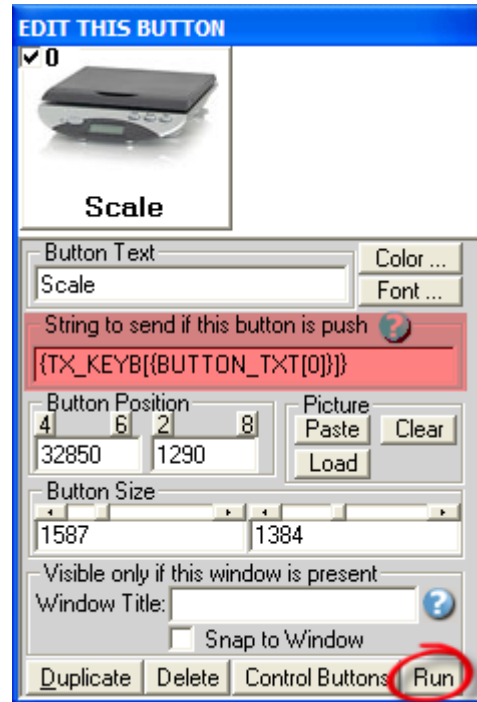


Section “Virtual Keyboard” Configuration “Button Configuration” edit this option:  
String to send if this button is push: **{TX\_KEYB[{BUTTON\_TXT[0]}}**

**Step #11** (Test: Weight in real-time directly on the virtual button)



TEST YOUR SCALE



Click on button: [Run](#)  
Open the Windows [NotePad](#)  
Put something on the scale  
Click on your: [Virtual Button](#)

The weight should be written in the [NotePad](#) when you click the button.

## Step #12 (*Optional*: Button in MS Access and weight to field)



Use this Step to receive the weight in your MS Access form.

With this solution the button to request the weight is directly in your MS Access form and the weight is sent directly in the good field of your form !

### Bill Redirect software configuration:

- Enable the section: [File](#)
- In **File** section, set the switch to: [Read](#)
- In **Serial Port** section, set the switch to: [Off](#)
- In **Serial Port Configuration** set option **Send weight** to: [On demand](#)
- In **Keyboard Buffer** section, set the switch to: [On](#)
- In **Pressed Key** section, set the switch to: [Off](#)
- In **File Configuration**, enter in field **File**: [C:\BillProduction.cfg\request.txt](#)
- In **File Configuration**, check the option: [Delete the file after reading](#)
- On **main screen**, click on button: [Save Configuration](#)

### MS Access Form configuration:

- In your MS ACCESS to receive the weight in your form... add this code on a button in your form:

```
On Error Resume Next
Text1.SetFocus
Open "C:\BillProduction.cfg\request.txt" For Append As #1
Print #1, "{TX_KEYB[{CTRL_UP}{ALT_UP}{USB_TX[REQWEIGHT}]}"
Close #1
```

- ❖ Replace **Text1** by your Text Box field name where you want receive the weight



If a problem persist or to do more  
use our  
Software configuration and integration service  
It's free, fast (*usually the same day*), and efficient !  
Submit your case to [info@billproduction.com](mailto:info@billproduction.com)  
and receive a customized solution !

**For more documentation visit:**



<http://www.billproduction.com/documentation.html>

**To receive the data in real time to a existing Excel file,**



install our Excel Plugin: [http://www.billproduction.com/Plugin\\_DDE.zip](http://www.billproduction.com/Plugin_DDE.zip)

Use this documentation: [http://www.billproduction.com/Bill\\_DDE\\_over\\_Ethernet.pdf](http://www.billproduction.com/Bill_DDE_over_Ethernet.pdf)



**If a problem persist or to do more  
use our  
Software configuration and integration service  
It's free, fast (usually the same day), and efficient !  
Submit your case to [info@billproduction.com](mailto:info@billproduction.com)  
and receive a customized solution !**