



Documentation: 29/04/2013

## Create a Telnet Server with Bill Redirect Software


to manage multiple data acquisition WiFi terminals

Perfect to take your inventory, data acquisition or shop floor data collection !





Use this documentation with the product : Bill Redirect 7.0W or more



**If a problem persist or to do more  
use our  
Software configuration and integration service  
It's free, fast (usually the same day), and efficient !  
Submit your case to [info@billproduction.com](mailto:info@billproduction.com)  
and receive a customized solution !**

Windows Telnet Server for your mobile devices,  
RF Terminal data acquisition Barcode scanners and any wireless environments data collection devices.  
<http://www.billproduction.com/Telnet%20Server%20data%20Acquisition/INDEX.HTML>

Email: [info@BillProduction.com](mailto:info@BillProduction.com)

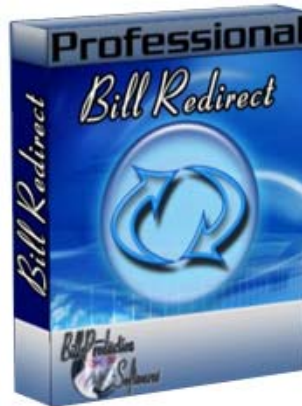
# Wavelink© Telnet Client Terminal Emulation Supported Devices

Wavelink Universal	Denso BHT700 1	LXE MX3X	Motorola (Symbol) MC70	Motorola (Symbol) PPT8800
Avery Dennison (Paxar) 6039	Fujitsu iPad 4	LXE MX7	Motorola (Symbol) MC75	Motorola (Symbol) SPT1700
CipherLab 9400 series	Honeywell (HHP) 7400	LXE MX8	Motorola (Symbol) MC9000	Motorola (Symbol) SPT1800
CipherLab 9500 series	Honeywell (HHP) 7600	LXE MX9	Motorola (Symbol) MC9500	Motorola (Symbol) VC5000
Datalogic 315	Honeywell (HHP) 9500	LXE VX3X	Motorola (Symbol) MK1100	Motorola (Symbol) VC6090
Datalogic 325	Honeywell (HHP) 9900	LXE VX6	Motorola (Symbol) MK1200	Motorola (Symbol) VRC3900
Datalogic 335	Honeywell (HHP) 9900	LXE VX7	Motorola (Symbol) MK2000	Motorola (Symbol) VRC4000
Datalogic 345	Intermec (HHP) 700 Color	Metrologic 5700	Motorola (Symbol) MK2200	Motorola (Symbol) VRC6900
Datalogic 4200	Intermec CK3	Motorola (Symbol) ES400	Motorola (Symbol) MK4000	Motorola (Symbol) VRC7900
Datalogic Elf	Intermec CK30	Motorola (Symbol) FR6000	Motorola (Symbol) MK500	Motorola (Symbol) VRC8900
Datalogic Falcon 4400	Intermec CK31C	Motorola (Symbol) FR68	Motorola (Symbol) MT2000	Motorola (Symbol) WSS1000
Datalogic J Series	Intermec CK61	Motorola (Symbol) HC700	Motorola (Symbol) PDT3100	Motorola (Symbol) WT4000
Datalogic Kyman	Intermec CK30	Motorola (Symbol)	Motorola (Symbol) PDT3540	Palm V
Datalogic Memor	Intermec CN2A	LRT3800	Motorola (Symbol) PDT6100	Psion-Teklogix 7525 Workabout Pro
Datalogic Pegaso	Intermec CN2B	Motorola (Symbol) MC1000	Motorola (Symbol) PDT6800	Psion-Teklogix 7527 Workabout Pro 2
Datalogic R10/R12	Intermec CN3	Motorola (Symbol) MC17	Motorola (Symbol) PDT7000	Psion-Teklogix 7535 G2
Datalogic R7	Intermec CN30	Motorola (Symbol) MC3000	Motorola (Symbol) PDT7200	Psion-Teklogix 8525
Datalogic Rhino-NET	Intermec CV30	Motorola (Symbol) MC3100	Motorola (Symbol) PDT7500	Psion-Teklogix IKON
Datalogic Skorpio 2	Intermec CV60	Motorola (Symbol) MC35	Motorola (Symbol) PDT8000	Speakeasy SpeakeasyCE
	Janam XG100	Motorola (Symbol) MC50	Motorola (Symbol) PDT8100	Speakeasy SpeakeasyWin
	LXE HX2	Motorola (Symbol) MC55	Motorola (Symbol) PPT2800	Telxon PTC960
		Motorola (Symbol) MC65		

**Bill Redirect Software Telnet Server perfect to take your inventory, data acquisition or shop floor data collection.**

**This documentation demonstrate how collect data acquisition with an iPhone, iPad, Windows Mobile device, Windows CE device or with any WiFi terminal with a Telnet Client**

**Step #1 (Installation)**



**Download and install Bill Redirect software**

**[http://www.billproduction.com/Bill\\_COMtoKB.ZIP](http://www.billproduction.com/Bill_COMtoKB.ZIP)**

**Step #2** (Use this step if your data acquisition terminal is an iPhone or iPad)

## iPhone / iPad configuration



- Install in your device this application: **Mocha Telnet Lite** By MochaSoft  
<http://itunes.apple.com/us/app/mocha-telnet-lite/id286893976>

To read barcode, you must buy an **OPTICON 2002** or a **Unitech MS910** Barcode Scanner:

**OPTICON 2002:** <http://www.opticon.com/OPN2002-connect-to-iPad-or-iPhone.aspx>

**OPTICON 2002:** <http://www.opticon.com/OPN2002.aspx>

**Unitech MS910:** <http://www.amazon.com/Unitech-MS910-CUBB00-SG-MS910/dp/B008NA981G>

*\* More information at step #9*

**Step #3** (Use this step if your data acquisition terminal is a Windows mobile or CE)



- Install in your device: **Wavelink Telnet Client**

*\* The company Datalogic includes Wavelink software with many of their terminals.*

<http://www.wavelink.com/datalogic/>

*\* More information at step #10*

**Step #4** (Use this step for all other data acquisition devices.)



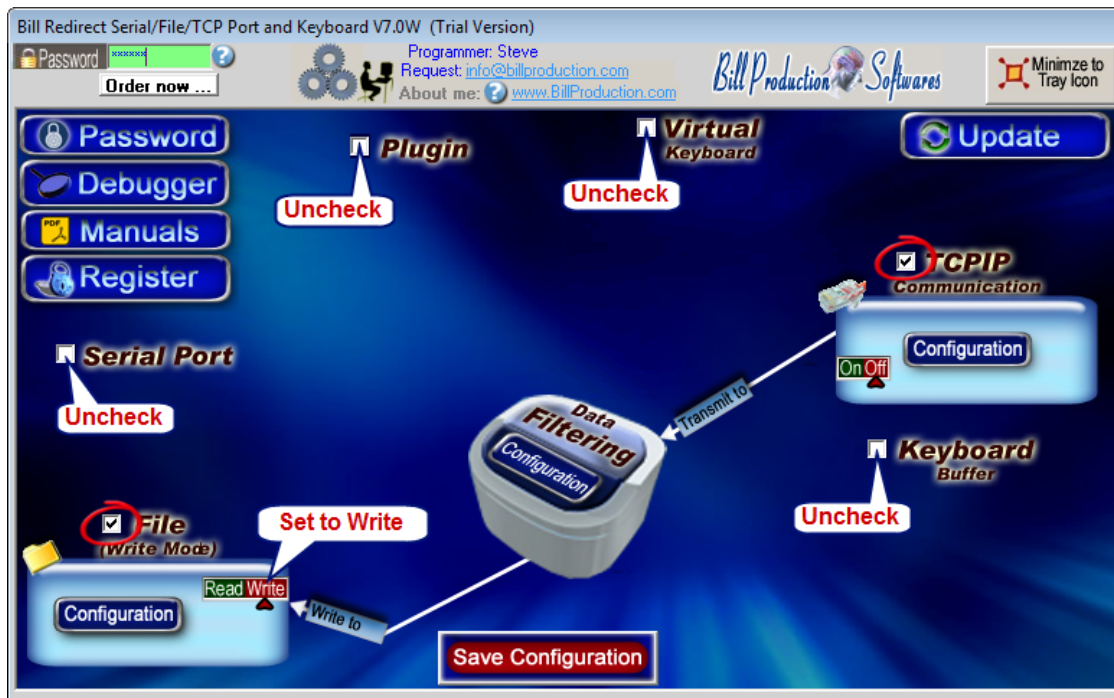
- Install in your device a: **Wavelink Telnet Client** or any Telnet Client Software

*\* The company Datalogic includes Wavelink software with many of their terminals (free).*

[http://www.wavelink.com/p/terminal-emulation\\_supported-devices](http://www.wavelink.com/p/terminal-emulation_supported-devices)

This solution can also work's with Adroid devices like phone and tablet.  
Solution: Install a Telnet Client application in your device from Apps Android Market

### Step #5 (General configuration)



- Disable all except the **TCPIP** and **File** section.
- Set the TCPIP switch to: **Off**
- Set the File switch to: **Write**



## Step #6 (File configuration)



- Click on: File Configuration

- Enter in File: **The directory and destination filename**

**Example: C:\DATA\_ACQUISITION.XLS**

\* You must enter a file name that does not exist... our software will automatically create it.

To receive the data in real time to a existing Excel file,



install our Excel Plugin: [http://www.billproduction.com/Plugin\\_DDE.zip](http://www.billproduction.com/Plugin_DDE.zip)

Use this documentation: [http://www.billproduction.com/Bill\\_DDE\\_over\\_Ethernet.pdf](http://www.billproduction.com/Bill_DDE_over_Ethernet.pdf)

## Step #7 (TCPIP Configuration)



- Click on button: **TCPIP Configuration**
- Select the TCP mode : **Server**



**Take in note the IP address of your computer.**

- Enter in field Port: **23**
- Check the option: **Telnet Server manage**





## Step #9 (Mocha Telnet for iPhone and iPad configuration)



<http://itunes.apple.com/fr/app/mocha-telnet-lite/id286893976>

Start Mocha Telnet Lite in your iPhone or iPad

- On menu click on: **Add another Server**

- Click on: **New... Add a configuration**

- Enter in “**IP address**”:   The address taken in note at **Step #7**

- Enter in “**Port**”: **23**

- On the menu click on: **Connect**



- Click on the **IP address** and **Test ...**

**Step #10** (Configuration of device with Wavelink telnet client)



[http://www.wavelink.com/p/terminal-emulation\\_supported-devices](http://www.wavelink.com/p/terminal-emulation_supported-devices)

- First, install Wavelink Telnet on your device.
  - Start Wavelink telnet
- In menu "Configure" click on "Host Profiles"
  - Enter in "Password" field: system
  - Click on: Add
  - Enter in "Alias" : BillProduction

- Enter in "Address":   The address taken in note at [Step #7](#)
    - Enter in Port: **23**
    - Use the Emulation: **VT100**
- \*\*\* Important, **don't check** the option "Use SSH encryption"

- Click on: **OK**
- Click on: **Save**
- Click on: **Done**
- **Test ...**

**For more documentation visit:**



**<http://www.billproduction.com/documentation.html>**

The image features a 3D rendering of puzzle pieces. One piece is blue and has a white '@' symbol on it, while the others are white. This graphic is positioned to the left of the text in the advertisement.

**If a problem persist or to do more  
use our  
Software configuration and integration service  
It's free, fast (*usually the same day*), and efficient !  
Submit your case to **[info@billproduction.com](mailto:info@billproduction.com)**  
and receive a customized solution !**



For more flexibility/options or an installation package build for your company: **[info@BillProduction.com](mailto:info@BillProduction.com)**