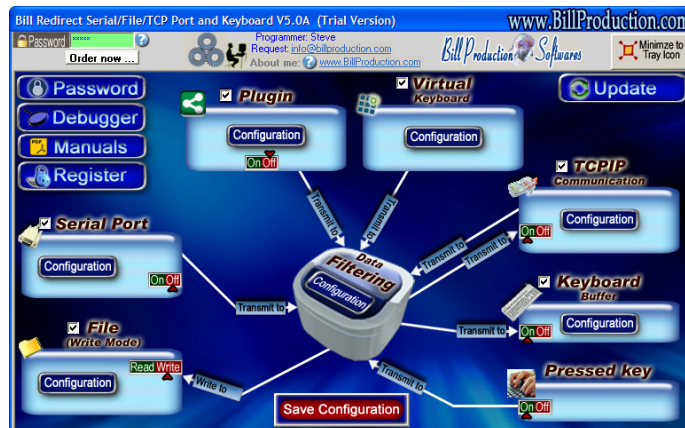




Bill Redirect

Transfer serial barcode data as keystrokes into your Windows applications.
Into a specific field
(as if it was typed in using the keyboard)

Documentation: 23/05/2013



Use this documentation with the product : Bill Redirect 5.0M and more

Software configuration and integration service

It's free, fast, and efficient !

Submit your case to info@billproduction.com
and receive a customized answer !

Our Internet site: <http://www.billproduction.com/>

Email: info@BillProduction.com

**This documentation demonstrate how
Transfer serial barcode data as keystrokes into your Windows applications.
Into a specific field**



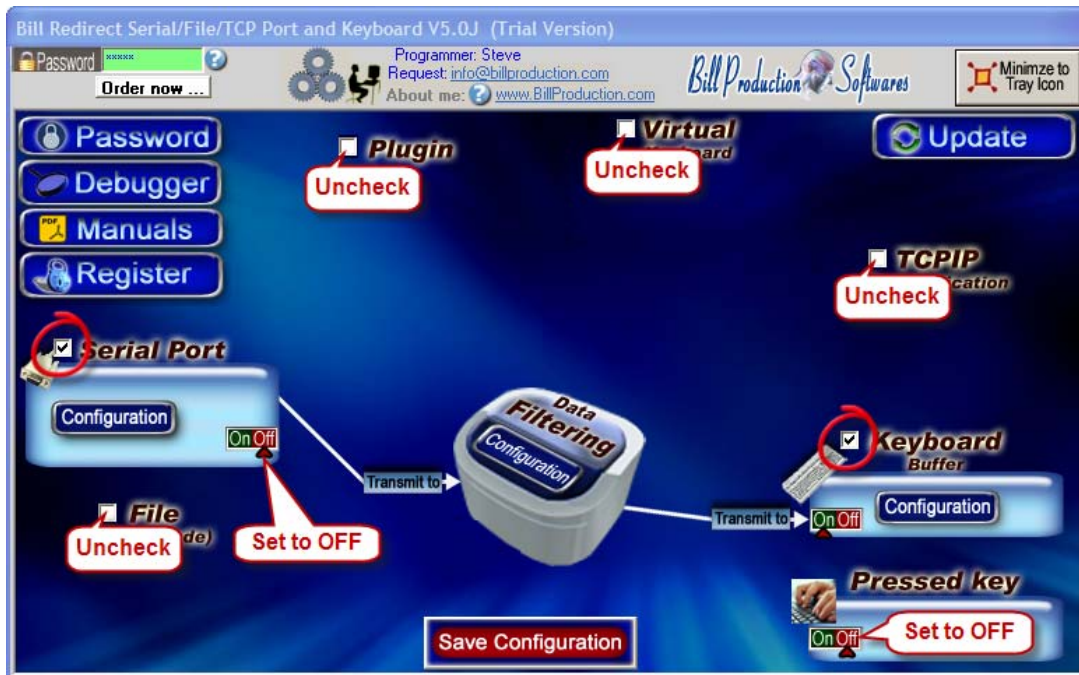
The following instructions apply to all Serial Port (RS-232) Barcode Readers
and
USB Barcode Reader that supports Com Port Emulation

Step #1

**Download and install Bill Redirect software
5.0M or more**

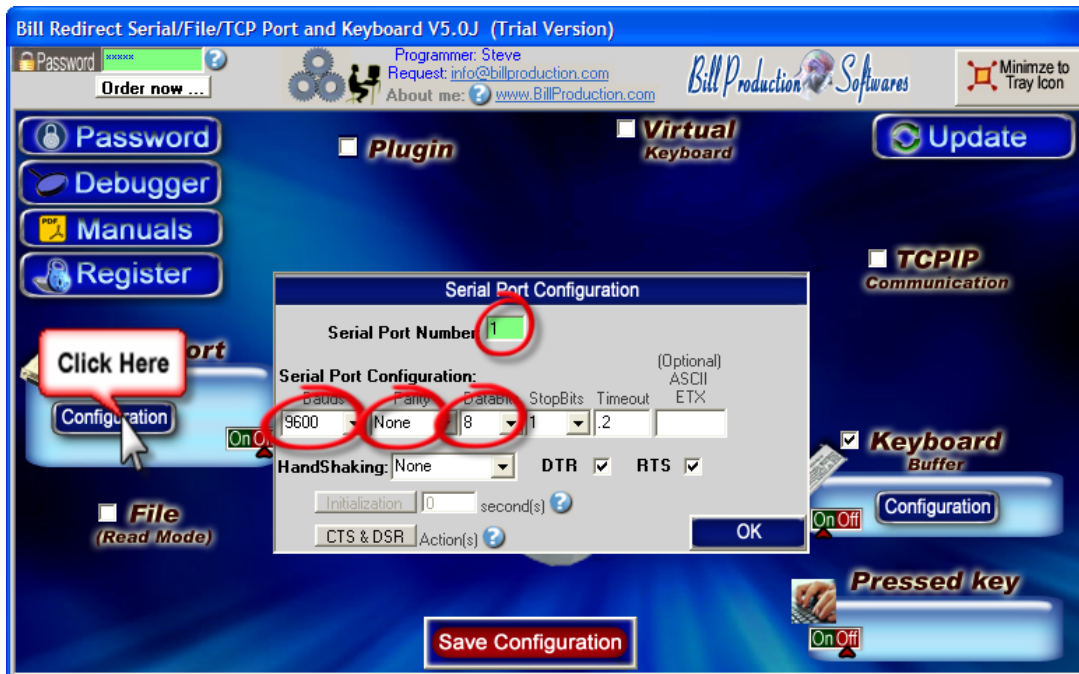
http://www.billproduction.com/Bill_COMtoKB.ZIP

Step #2



Disable all except the **Serial Port and **Keyboard Buffer** section.
Set to **OFF** Serial Port and Pressed key **switch**.**

Step #3

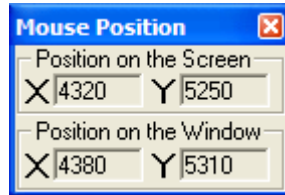


Click on button: **Configuration**.

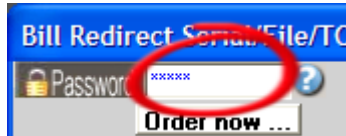
Enter the **Serial Port Number** where your Barcode reader is connected.

Serial Port Configuration: Enter the configuration of your Barcode Reader.

Step #4

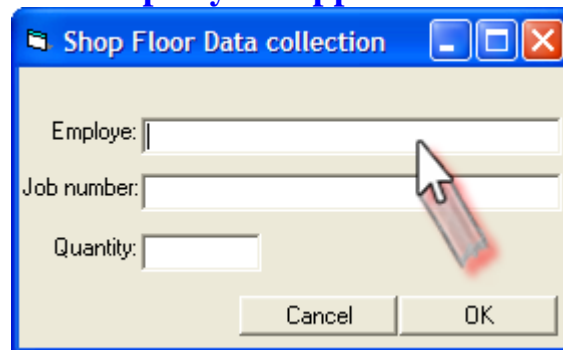


To open the “Mouse Position” window

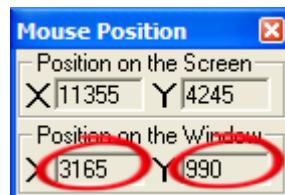


Enter in the field Password: **Mouse**

Open your application



Move the mouse pointer on the field where the data should be sent.
Click on this field and take in “Position on the Window”

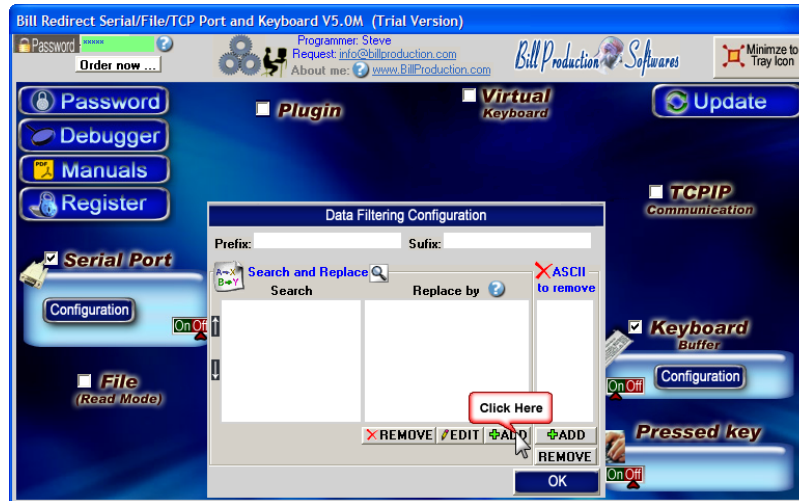


For this example: **3165** and **990**

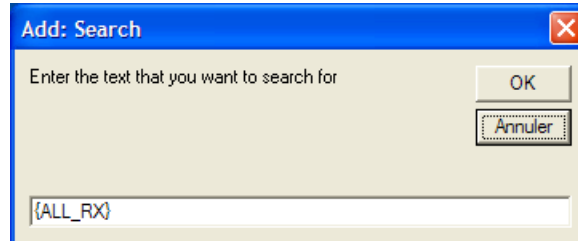
Step #5



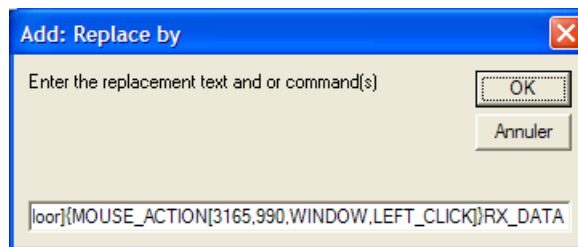
Click on button: **Configuration**



Click on button: **ADD**



Enter in this field: **{ALL_RX}**



Enter in this field:

{APP[Shop Floor]}{MOUSE_ACTION[3165,990,WINDOW,LEFT_CLICK]}RX_DATA

In this string 3165,990, is the field position noted before

In this string Shop Floor is your application name

* You can enter just a part of the title, for example if the title is **“Shop Floor Data Collection”** you can enter just a part of the title for example: **Shop Floor**

Step #6

A rectangular button with a dark blue background and white text that reads "OK".

Click on button: **OK**

A rectangular button with a red background and white text that reads "Save Configuration".

Click on button: **Save Configuration**
TEST

For more information, consult the product manual:
http://www.billproduction.com/Bill_Redirect_Manual.pdf