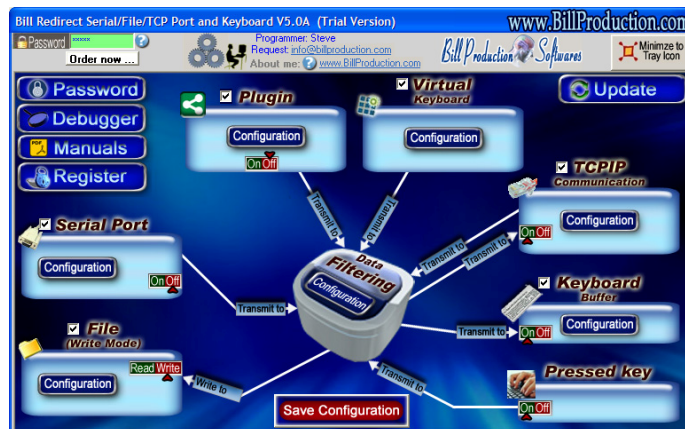




## Bill Redirect

Transfer serial barcode data as keystrokes into your Windows applications.  
(as if it was typed in using the keyboard)

Documentation: 24/02/2013



Use this documentation with the product : Bill Redirect 5.0L and more

## Serial RS232 to Keyboard wedge software:

[http://www.billproduction.com/Wedge\\_Keyboard\\_Serial\\_RS232\\_Barcode\\_Scanner/INDEX.HTML](http://www.billproduction.com/Wedge_Keyboard_Serial_RS232_Barcode_Scanner/INDEX.HTML)

Email: [info@BillProduction.com](mailto:info@BillProduction.com)

**This documentation demonstrate how  
Transfer serial barcode data as keystrokes into your Windows applications.**



The following instructions apply to all Serial Port (RS-232) Barcode Readers  
USB Barcode Reader that supports Comm Port Emulation  
Compatible with any proximity card readers RFID such as:

RFIDeas proximity card reader	HID proximity card reader	Indala proximity card reader
ioProx proximity card reader	Awid proximity card reader	Chubb proximity card reader
Paradox proximity card reader	Posiin proximity card reader	Verex proximity card reader
DesFire proximity card reader	Casi-Ruco proximity card reader	Keri proximity card reader
NexWatch proximity card reader	G-Prox proximity card reader	Mifare proximity card reader
ISO 14443a proximity card reader	ISO 15693 proximity card reader iClass	And many more ...

### Step #1

Download and install Bill Redirect software  
[http://www.billproduction.com/Bill\\_COMtoKB.ZIP](http://www.billproduction.com/Bill_COMtoKB.ZIP)

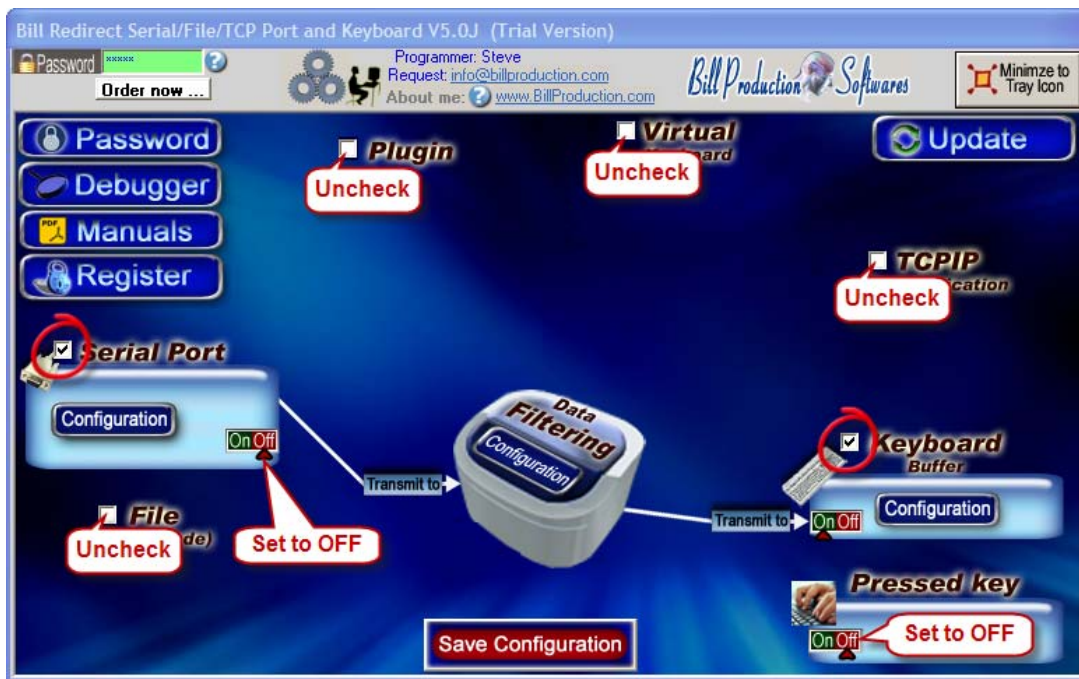


**Important**

**To manage Several Devices at the same time, use this documentation**  
[http://www.billproduction.com/Bill\\_Redirect\\_several\\_RS232\\_Devices.pdf](http://www.billproduction.com/Bill_Redirect_several_RS232_Devices.pdf)

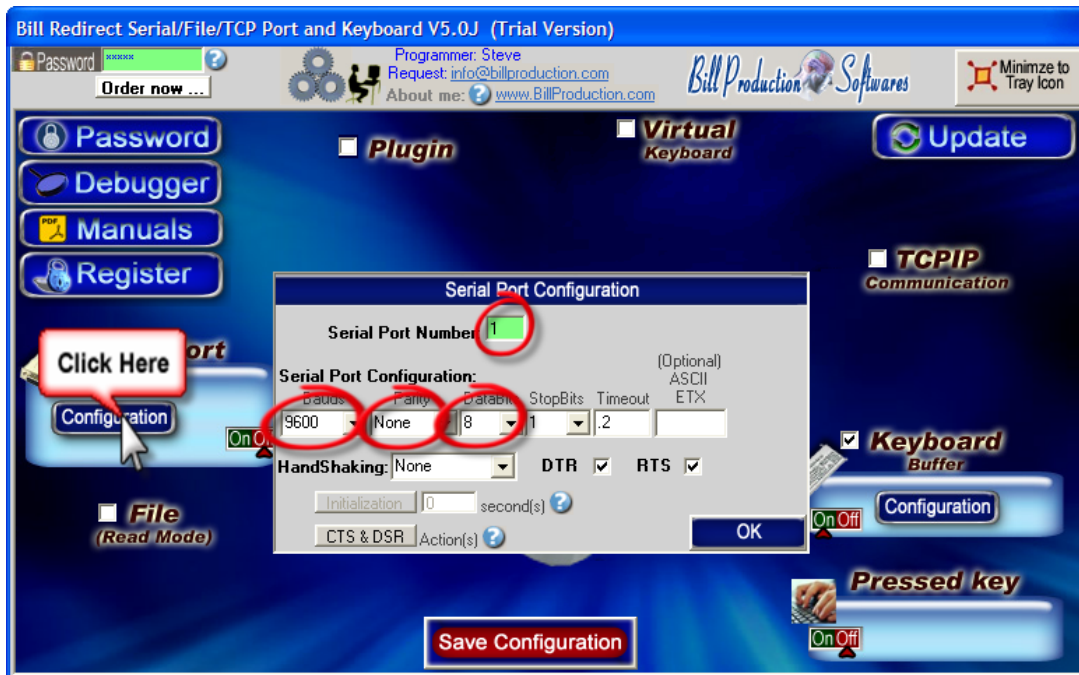
**else continue with the next step ...**

## Step #2



Disable all except the **Serial Port** and **Keyboard Buffer** section.  
Set to **OFF** Serial Port and Pressed key switch.

## Step #3



Click on button: **Configuration**.  
Enter the **Serial Port Number** where your Barcode reader is connected.

**Serial Port Configuration:** Enter the configuration of your Barcode Reader.

#### Step #4

OK

Click on button: **OK**

Save Configuration

Click on button: **Save Configuration**  
**TEST**



If a problem persist or to do more  
use our  
Software configuration and integration service  
It's free, fast (*usually the same day*), and efficient !  
Submit your case to [info@billproduction.com](mailto:info@billproduction.com)  
and receive a customized solution !

For more documentation visit:



<http://www.billproduction.com/documentation.html>